

MDX-C8970R

SONY[®]

*AEP Model
UK Model*

SERVICE MANUAL

SUPPLEMENT-1

File this supplement with the service manual.

Subject: Main/Display/Relay Boards Modification

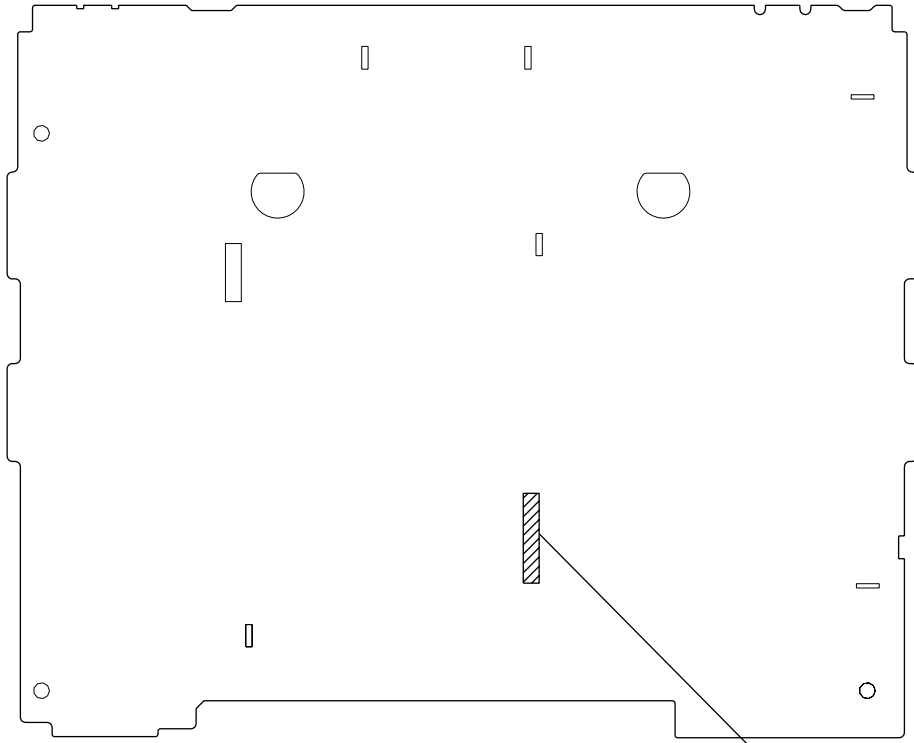
(ECN-CSB00896)

CONTENTS

1. DISCRIMINATION	2
2. DIAGRAMS	
2-1. Note for Printed Wiring Boards and Schematic Diagrams	3
2-2. Schematic Diagram – MAIN Board (1/5) –	5
2-3. Schematic Diagram – MAIN Board (2/5) –	6
2-4. Schematic Diagram – MAIN Board (3/5) –	7
2-5. Schematic Diagram – MAIN Board (4/5) –	8
2-6. Schematic Diagram – MAIN Board (5/5) –	9
2-7. Printed Wiring Board – MAIN Board (Component Side) –	10
2-8. Printed Wiring Board – MAIN Board (Conductor Side) –	11
2-9. Printed Wiring Board – DISPLAY Board –	12
2-10. Schematic Diagram – DISPLAY Board –	13
2-11. Printed Wiring Board – RELAY Board –	14
2-12. Schematic Diagram – RELAY Board –	15
3. ELECTRICAL PARTS LIST	16

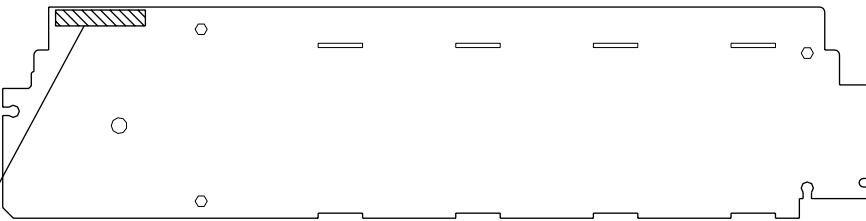
1. DISCRIMINATION

– MAIN BOARD (Component Side) –



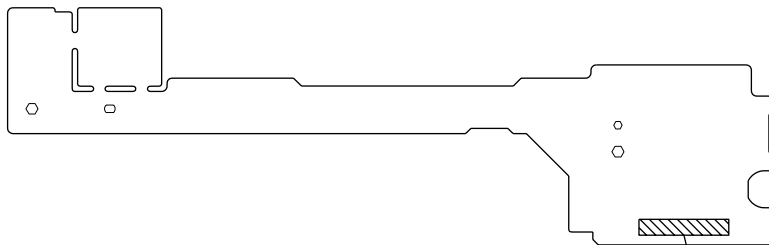
Former :1-674-589-11
New :1-674-589-12

– DISPLAY BOARD (Conductor Side) –



Former :1-674-590-11
New :1-674-590-12

– RELAY BOARD (Component Side) –



Former :1-674-591-11
New :1-674-591-12

2. DIAGRAMS

2-1. NOTE FOR PRINTED WIRING BOARDS AND SCHEMATIC DIAGRAMS

(In addition to this, the necessary note is printed in each block)

Note on Printed Wiring Boards:

- : parts extracted from the component side.
- : parts extracted from the conductor side.
- △ : internal component.
- ▨ : Pattern from the side which enables seeing.
(The other layers' patterns are not indicated.)

Caution:

Pattern face side: (Conductor Side)	Parts on the pattern face side seen from the pattern face are indicated.
Parts face side: (Component Side)	Parts on the parts face side seen from the parts face are indicated.

Note on Schematic Diagrams:

- All capacitors are in μF unless otherwise noted. pF: μpF
50 WV or less are not indicated except for electrolytics and tantalums.
- All resistors are in Ω and $1/4\text{ W}$ or less unless otherwise specified.
- △ : internal component.
- : panel designation.

Note: The components identified by mark △ or dotted line with mark △ are critical for safety.
Replace only with part number specified.

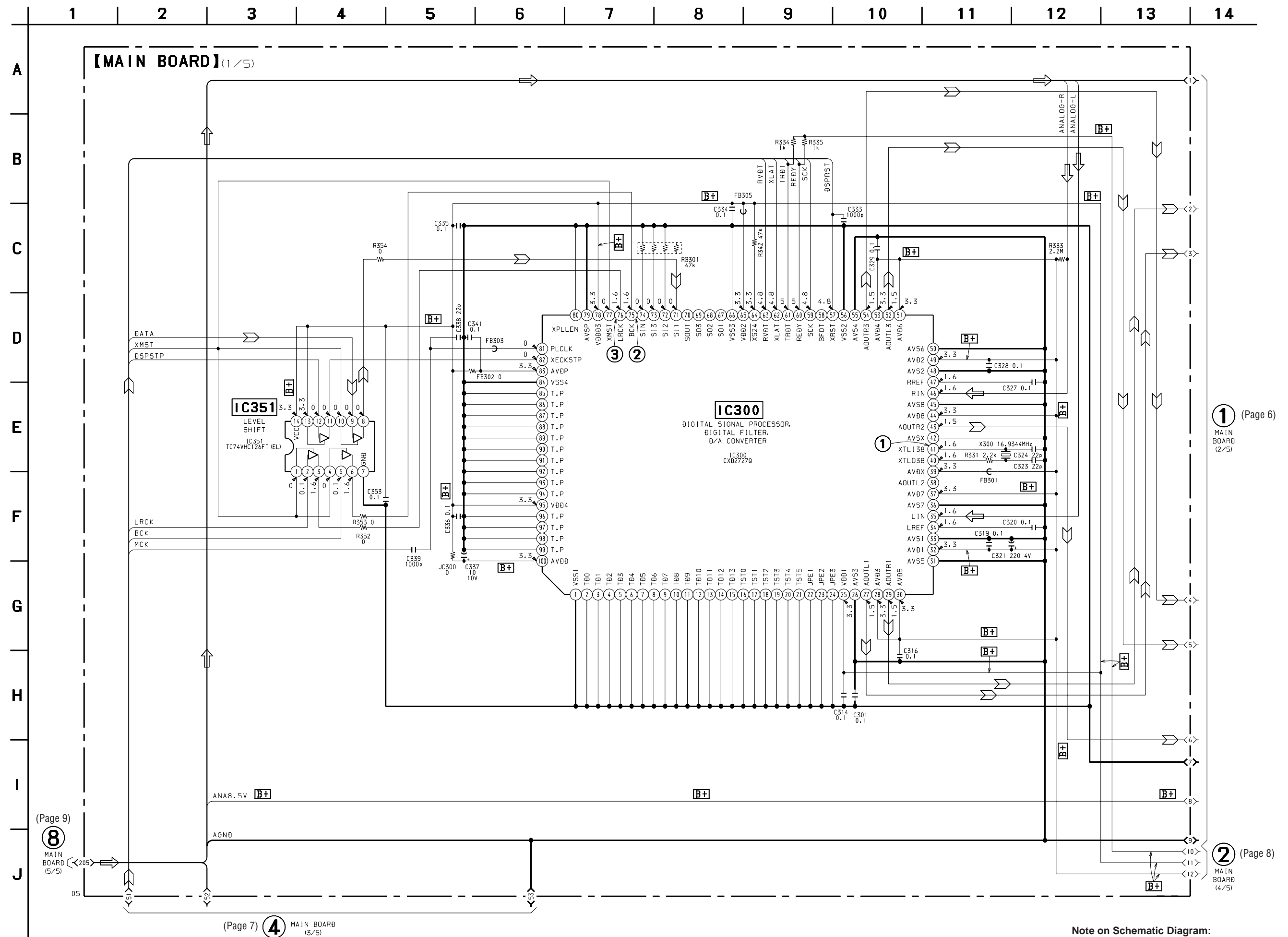
- B+ : B+ Line.
- : adjustment for repair.
- Power voltage is dc 14.4V and fed with regulated dc power supply from ACC and BATT cords.
- Voltages are taken with a VOM (Input impedance 10 M Ω). Voltage variations may be noted due to normal production tolerances.
- Waveforms are taken with an oscilloscope. Voltage variations may be noted due to normal production tolerances.
- Circled numbers refer to waveforms.
- Signal path.
 - : FM
 - ➡ : MW/LW
 - ↷ : MD
- Model Identification
The destination is expressed with the model according to the language of Program Rom mounted in the set.
How to identify the model is described below.

– POWER BOARD (Component Side) –



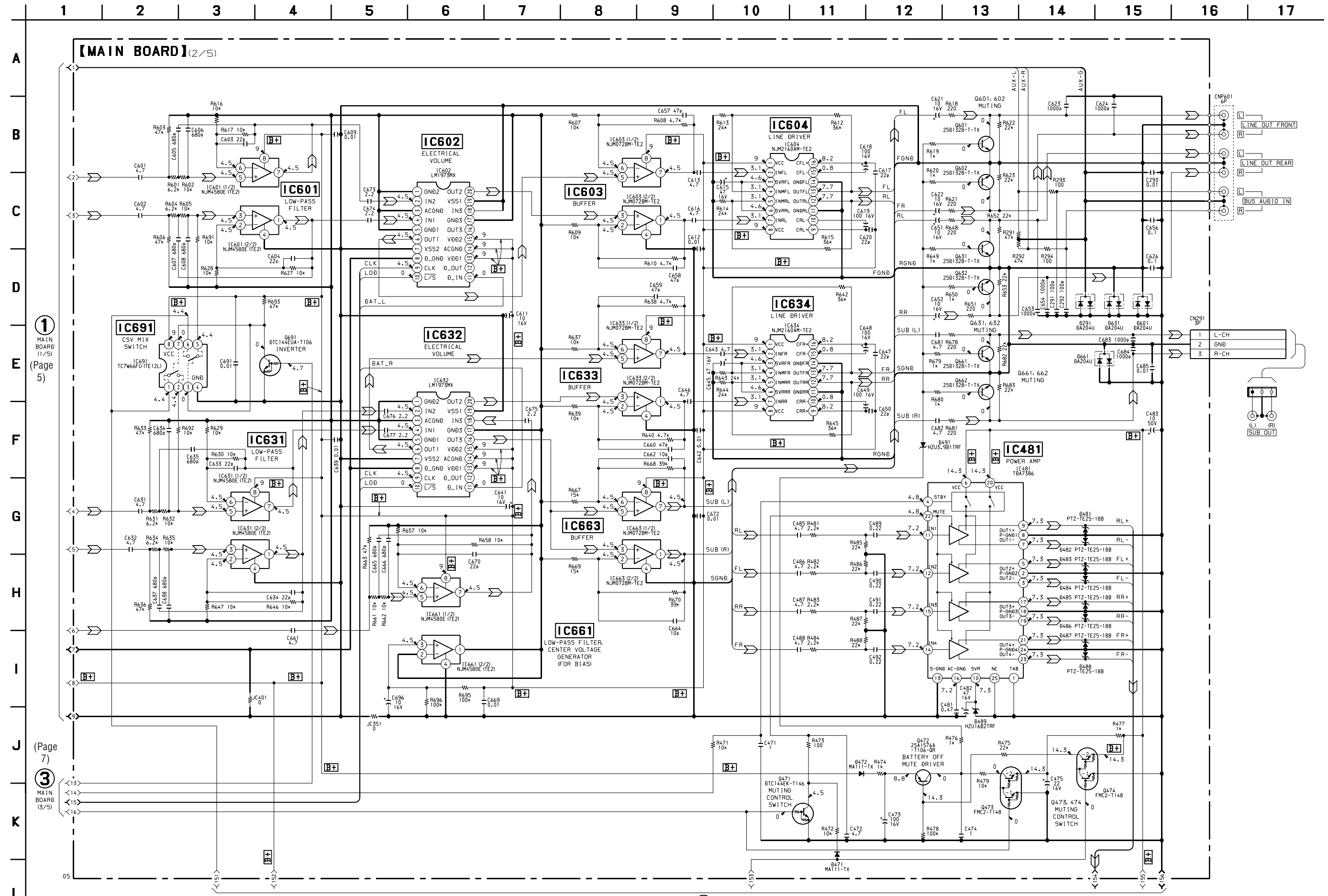
MSM534001E-49TSKFDR3 (TYPE C: ENGLISH, FRENCH)
MSM534001E-50TSKFDR3 (TYPE A: ENGLISH, SPANISH)
MSM534001E-51TSKFDR3 (TYPE B: ENGLISH, GERMAN)

2-2. SCHEMATIC DIAGRAM – MAIN Board (1/5) –



Note on Schematic Diagram:

- Voltages and waveforms are dc with respect to ground under no-signal (detuned) conditions.
no mark : FM



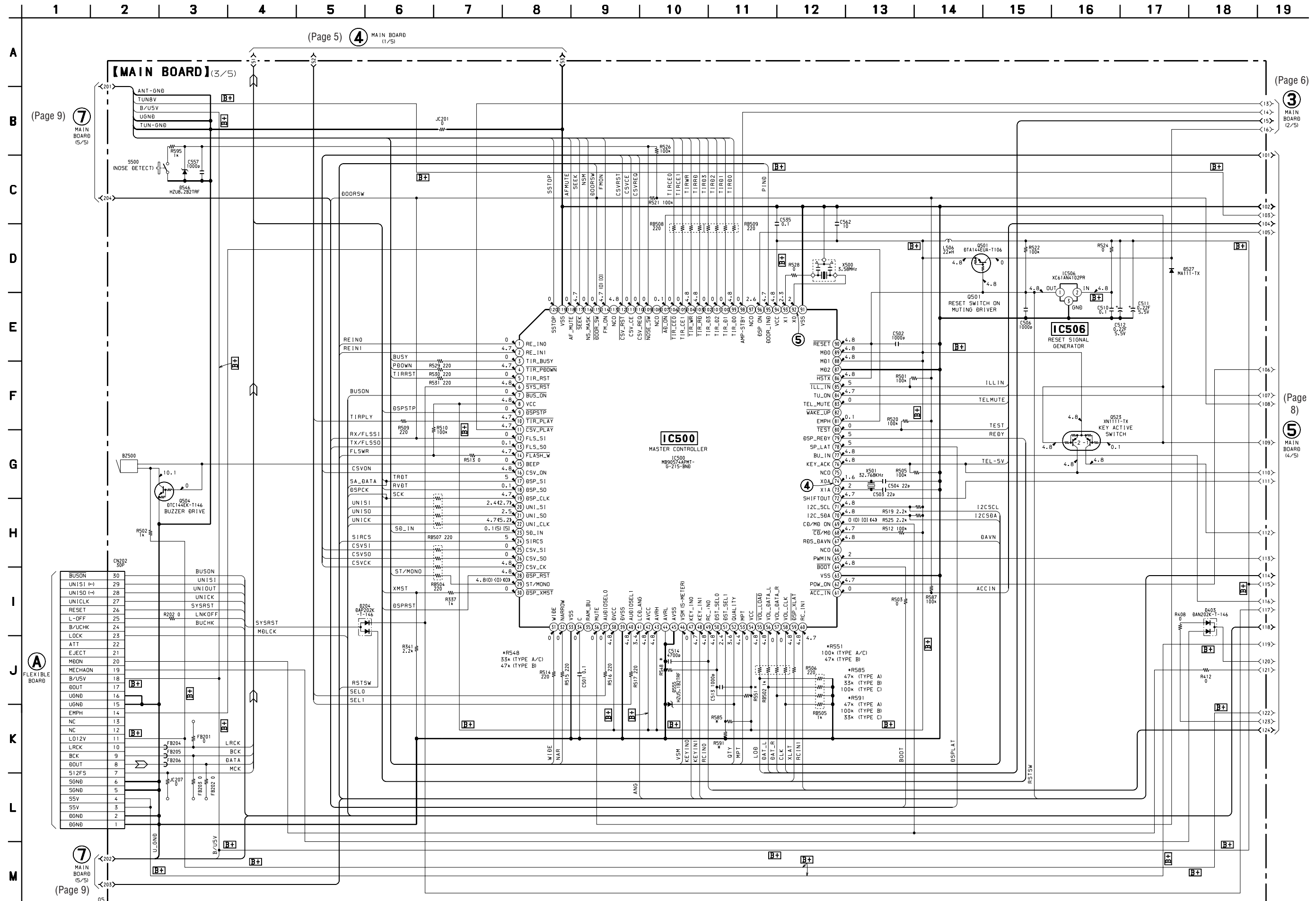
1 MAIN BOARD (1/5) (Page 5)

3 MAIN BOARD (3/5) (Page 7)

Note on Schematic Diagram:

- Voltages and waveforms are dc with respect to ground under no-signal (detuned) conditions.
- no mark : FM

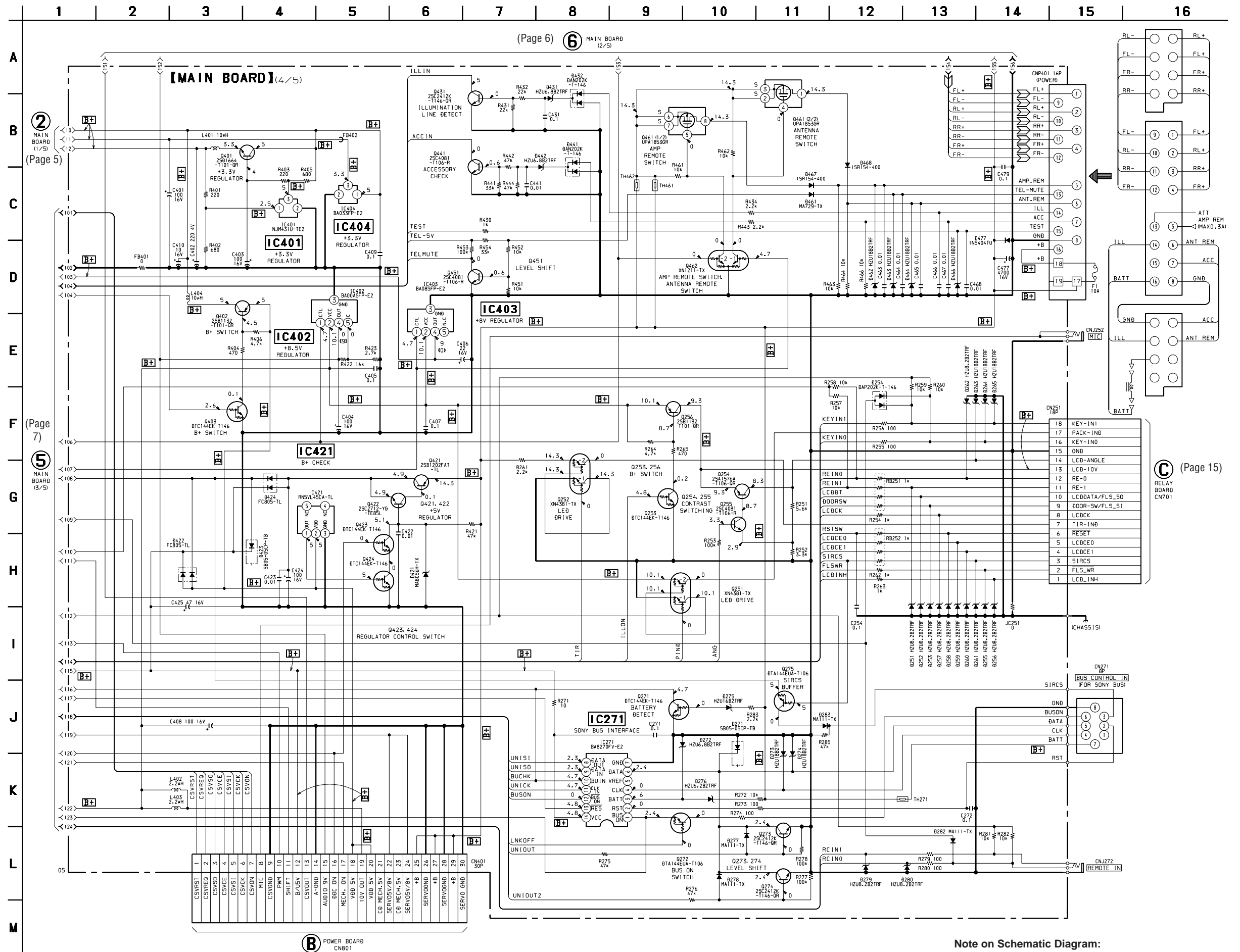
2-4. SCHEMATIC DIAGRAM - MAIN Board (3/5) -



Note on Schematic Diagram:
 • Voltages and waveforms are dc with respect to ground under no-signal (detuned) conditions.
 no mark : FM

() : MW
 [] : LW
 << >> : MD PLAY

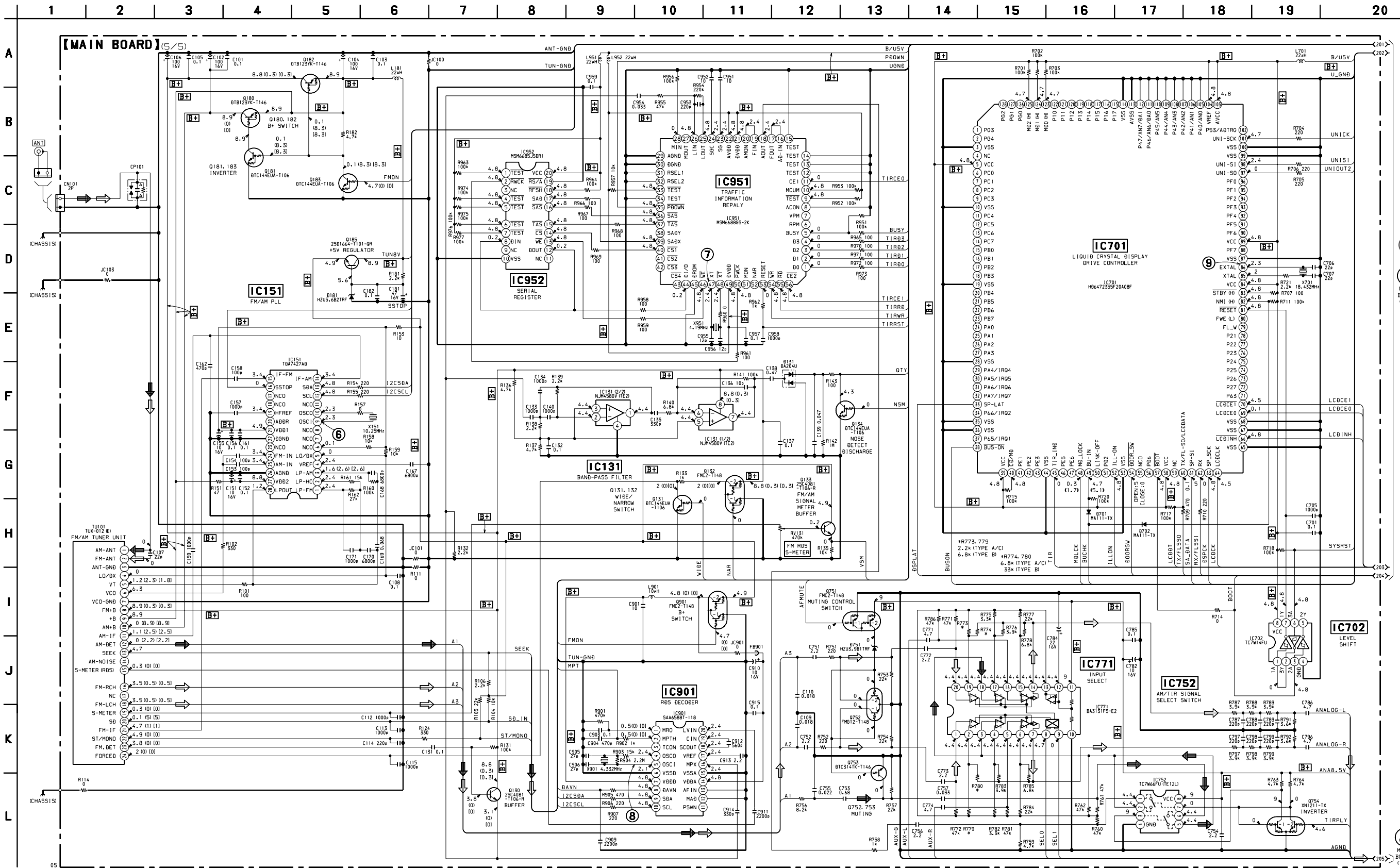
2-5. SCHEMATIC DIAGRAM – MAIN Board (4/5) –



Note on Schematic Diagram:

- Voltages and waveforms are dc with respect to ground under no-signal (detuned) conditions.
- no mark : FM
- << >> : MD PLAY

2-6. SCHEMATIC DIAGRAM – MAIN Board (5/5) –



(Page 7)
7
MAIN BOARD (5/5)

(Page 8)
8
MAIN BOARD (1/5)

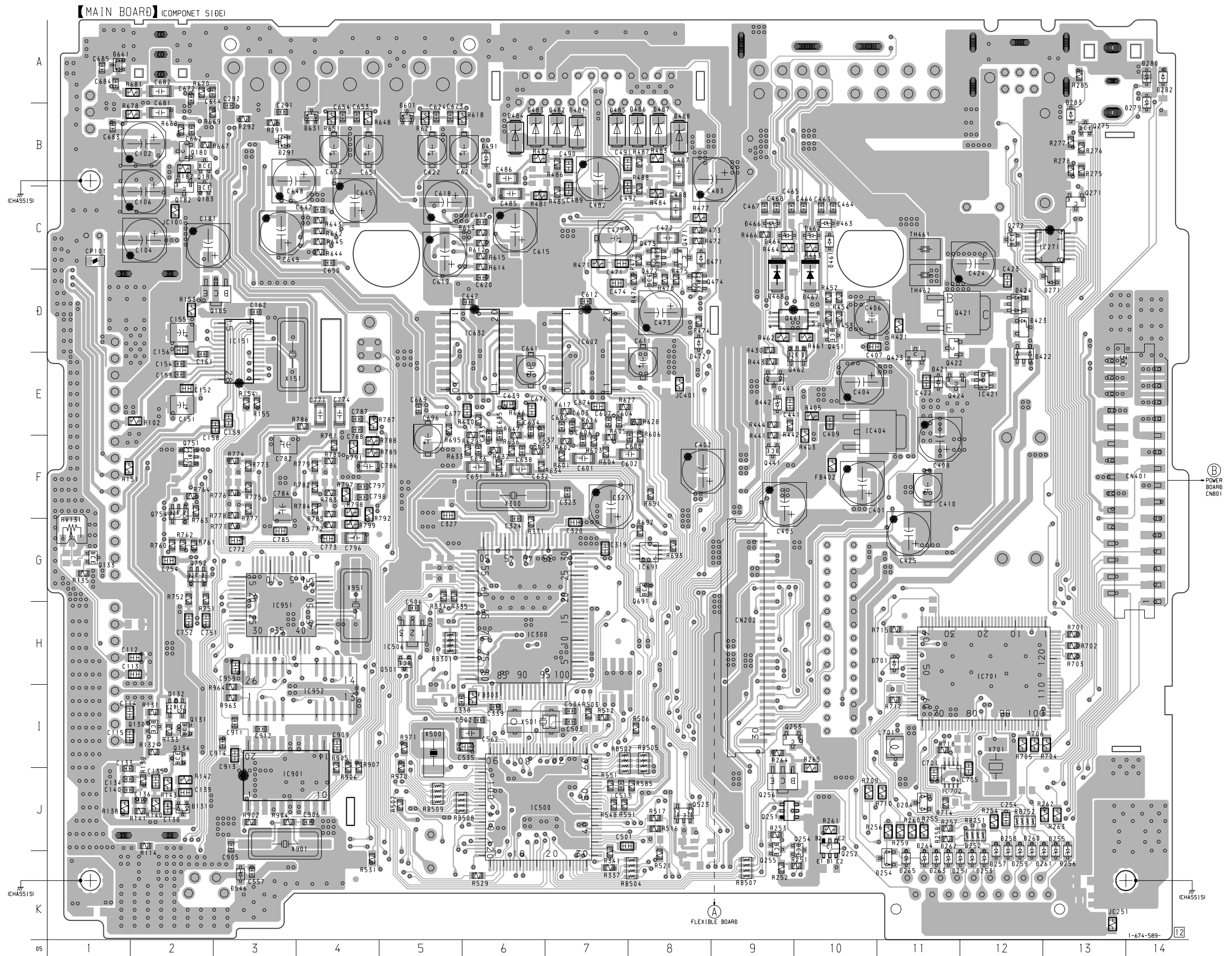
Note on Schematic Diagram:

- Voltages and waveforms are dc with respect to ground under no-signal (detuned) conditions.
- () : FM
- () : MW
- [] : LW
- ⟨ ⟩ : MD PLAY

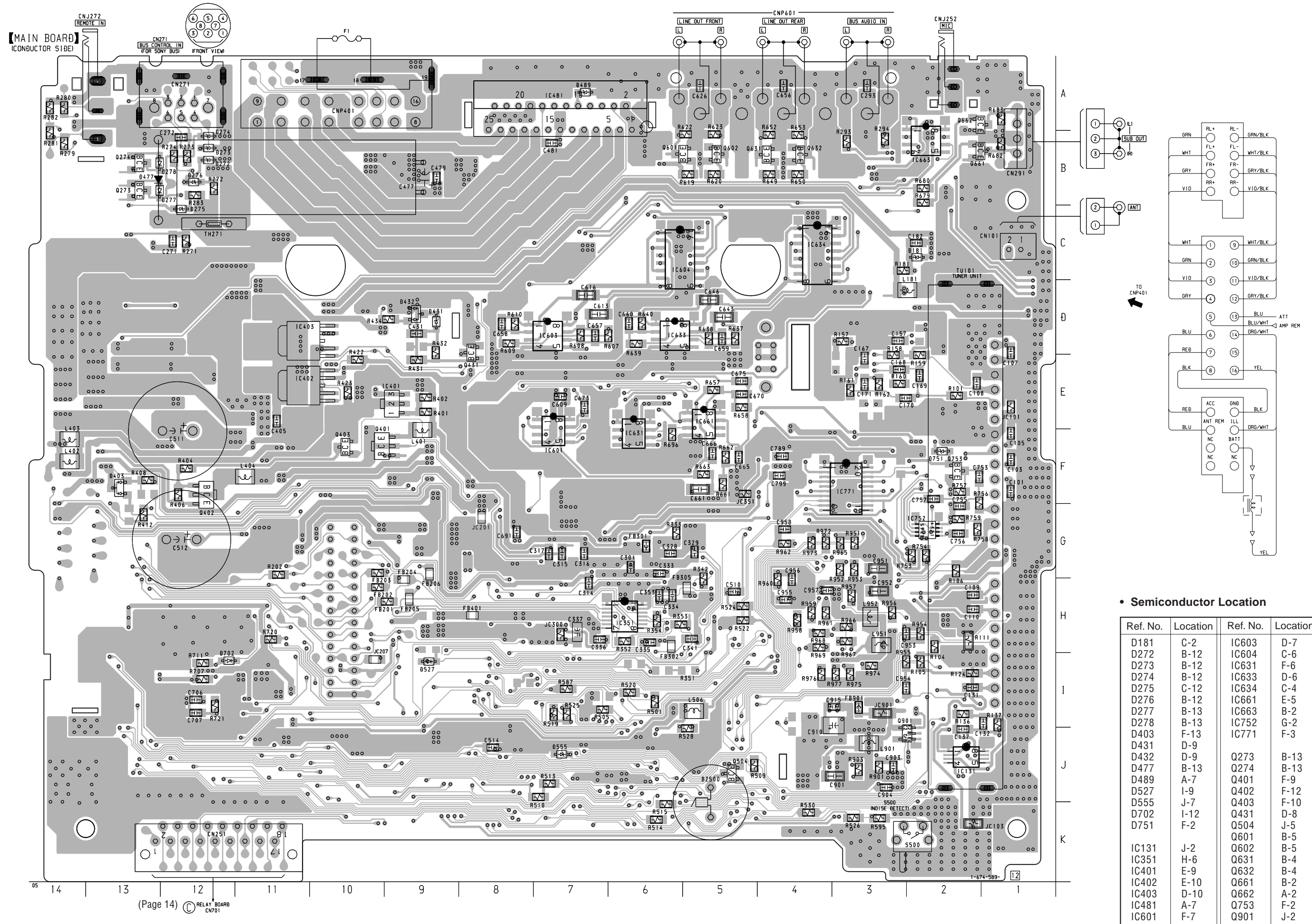
2-7. PRINTED WIRING BOARD – MAIN Board (Component Side) –

• Semiconductor Location

Ref. No.	Location	Ref. No.	Location
D131	J-2	IC151	E-3
D204	J-11	IC271	C-13
D251	K-12	IC300	H-6
D252	K-12	IC404	E-10
D253	K-12	IC421	E-12
D254	K-11	IC500	J-6
D255	K-13	IC506	H-5
D256	K-13	IC602	D-7
D257	K-12	IC632	D-6
D258	K-12	IC691	G-8
D259	K-12	IC701	H-12
D260	K-12	IC702	J-11
D261	K-13	IC901	J-3
D262	K-11	IC951	H-3
D263	K-11	IC952	I-3
D264	K-11		
D265	K-11	Q130	I-2
D271	D-13	Q131	I-2
D279	B-14	Q132	I-2
D280	A-14	Q133	G-1
D282	A-14	Q134	I-2
D283	B-13	Q180	B-2
D291	B-3	Q181	B-2
D421	E-11	Q182	C-2
D422	E-12	Q183	C-2
D423	D-12	Q185	D-3
D424	D-12	Q251	J-9
D441	E-9	Q252	J-10
D442	E-9	Q253	I-9
D461	C-10	Q254	J-10
D462	C-10	Q255	J-9
D463	C-10	Q256	J-9
D464	C-9	Q271	C-13
D466	C-9	Q272	C-12
D467	D-10	Q275	B-13
D468	D-9	Q421	D-11
D471	C-8	Q422	D-11
D472	D-8	Q423	E-11
D481	B-7	Q424	E-11
D482	B-7	Q441	F-9
D483	B-6	Q451	D-10
D484	B-6	Q461	D-9
D485	B-7	Q462	E-10
D486	B-8	Q471	C-8
D487	B-8	Q472	D-8
D488	B-8	Q473	C-8
D491	B-6	Q474	D-8
D546	K-3	Q501	H-5
D601	B-5	Q523	J-8
D631	B-4	Q691	G-8
D661	A-1	Q751	F-2
D701	H-11	Q752	G-2
		Q754	F-2



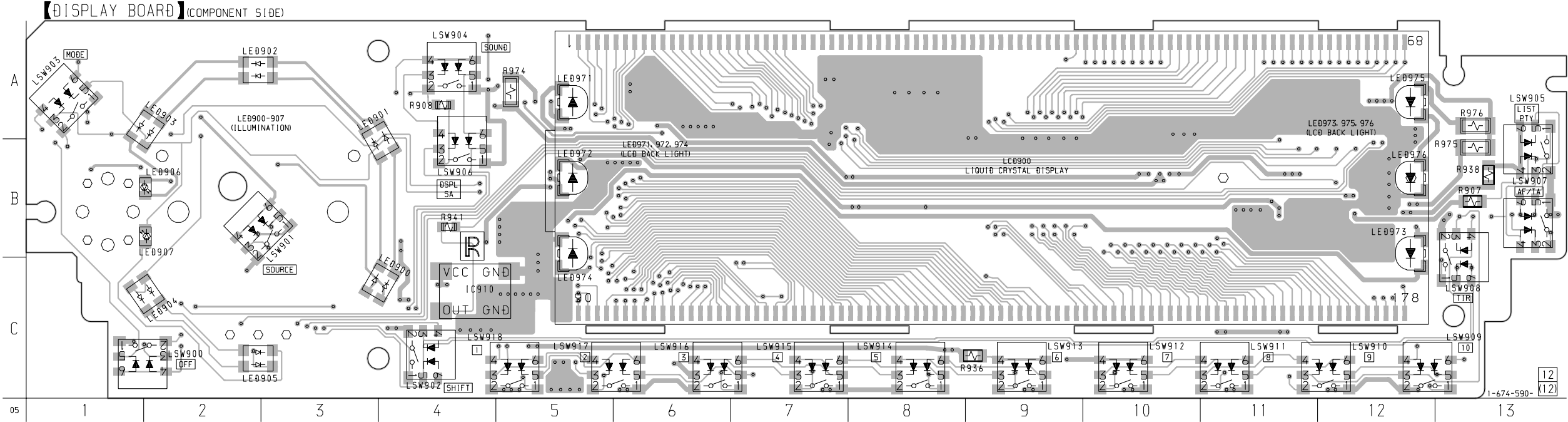
2-8. PRINTED WIRING BOARD – MAIN Board (Conductor Side) –



2-9. PRINTED WIRING BOARD – DISPLAY Board –

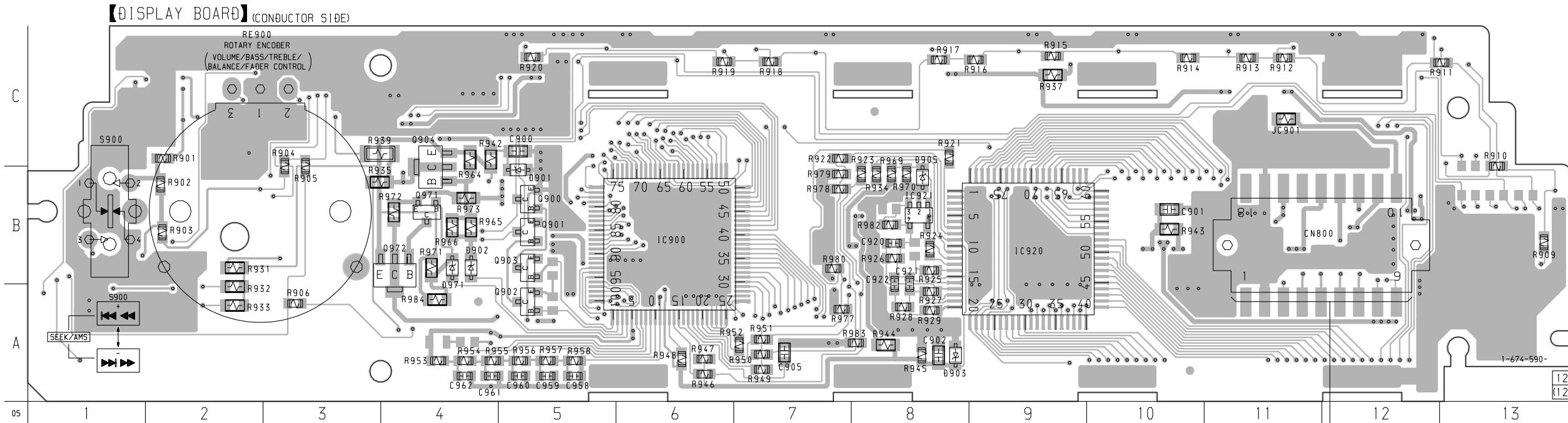
• Semiconductor Location (Component Side)

Ref. No.	Location
IC910	C-4
LED900	C-4
LED901	B-4
LED902	A-3
LED903	A-2
LED904	C-2
LED905	C-2
LED906	B-2
LED907	B-2
LED971	A-5
LED972	B-5
LED973	C-12
LED974	C-5
LED975	A-12
LED976	B-12



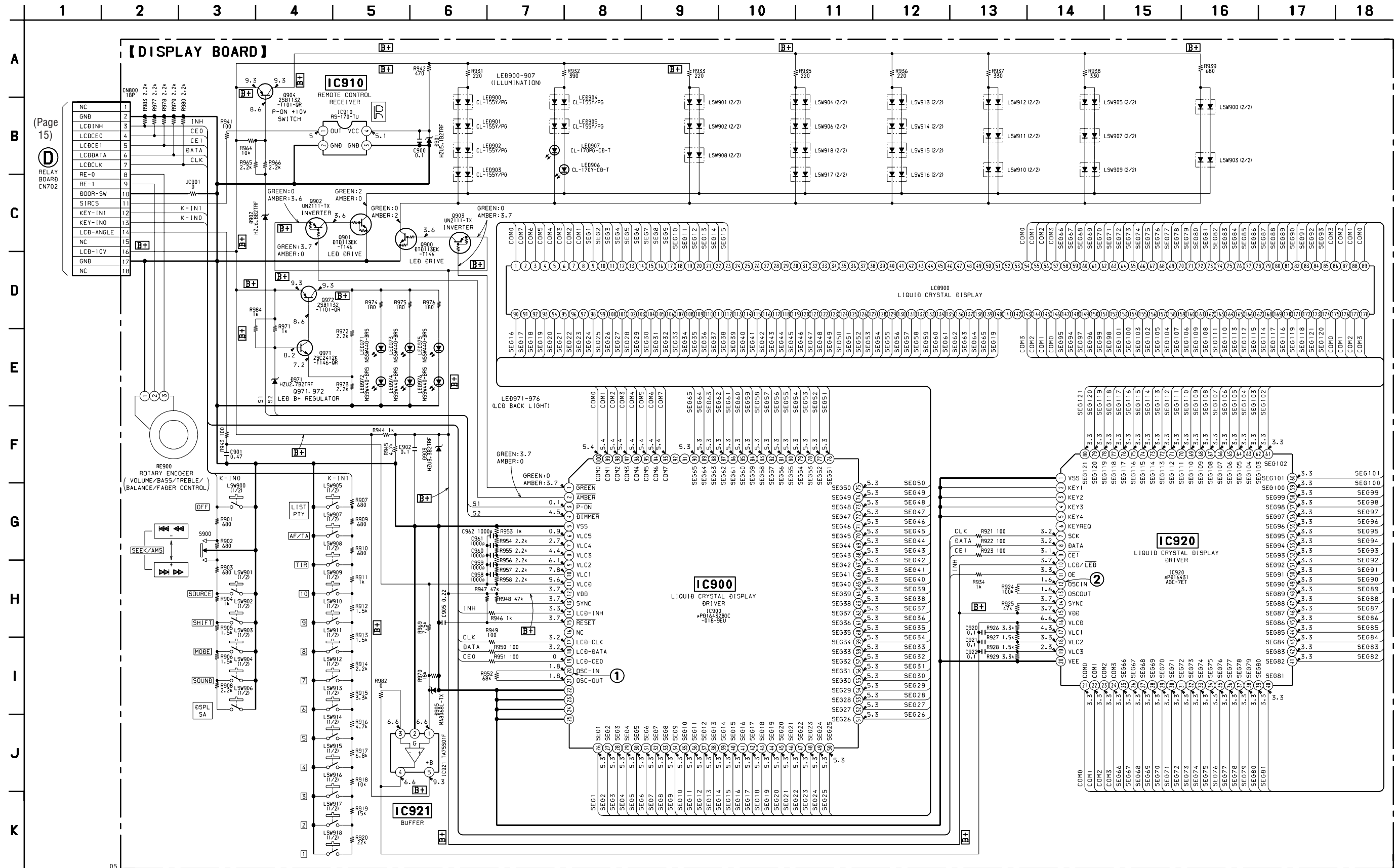
• Semiconductor Location (Conductor Side)

Ref. No.	Location
D901	B-5
D902	B-4
D903	A-8
D905	B-8
D971	B-4
IC900	B-6
IC920	B-9
IC921	B-8
Q900	B-5
Q901	B-5
Q902	A-5
Q903	B-5
Q904	B-4
Q971	B-4
Q972	B-4



RELAY BOARD
CN702
(Page 14)

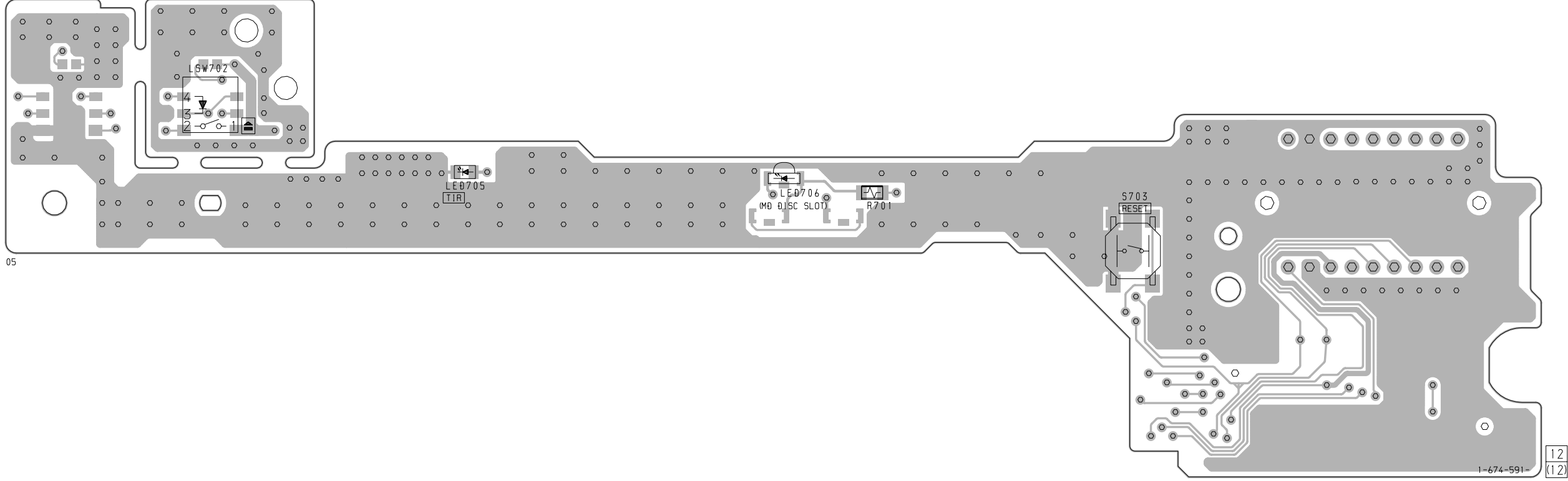
2-10. SCHEMATIC DIAGRAM - DISPLAY Board -



Note on Schematic Diagram:
 • Voltages and waveforms are dc with respect to ground under no-signal (detuned) conditions.
 no mark : FM

2-11. PRINTED WIRING BOARD – RELAY Board –

【RELAY BOARD】(COMPONENT SIDE)



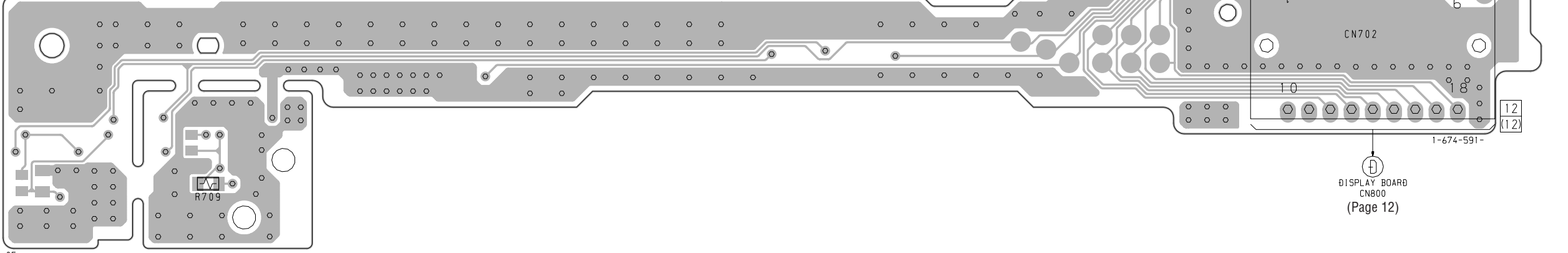
05

12
12

(Page 11)

MAIN BOARD
CN251

【RELAY BOARD】(CONDUCTOR SIDE)

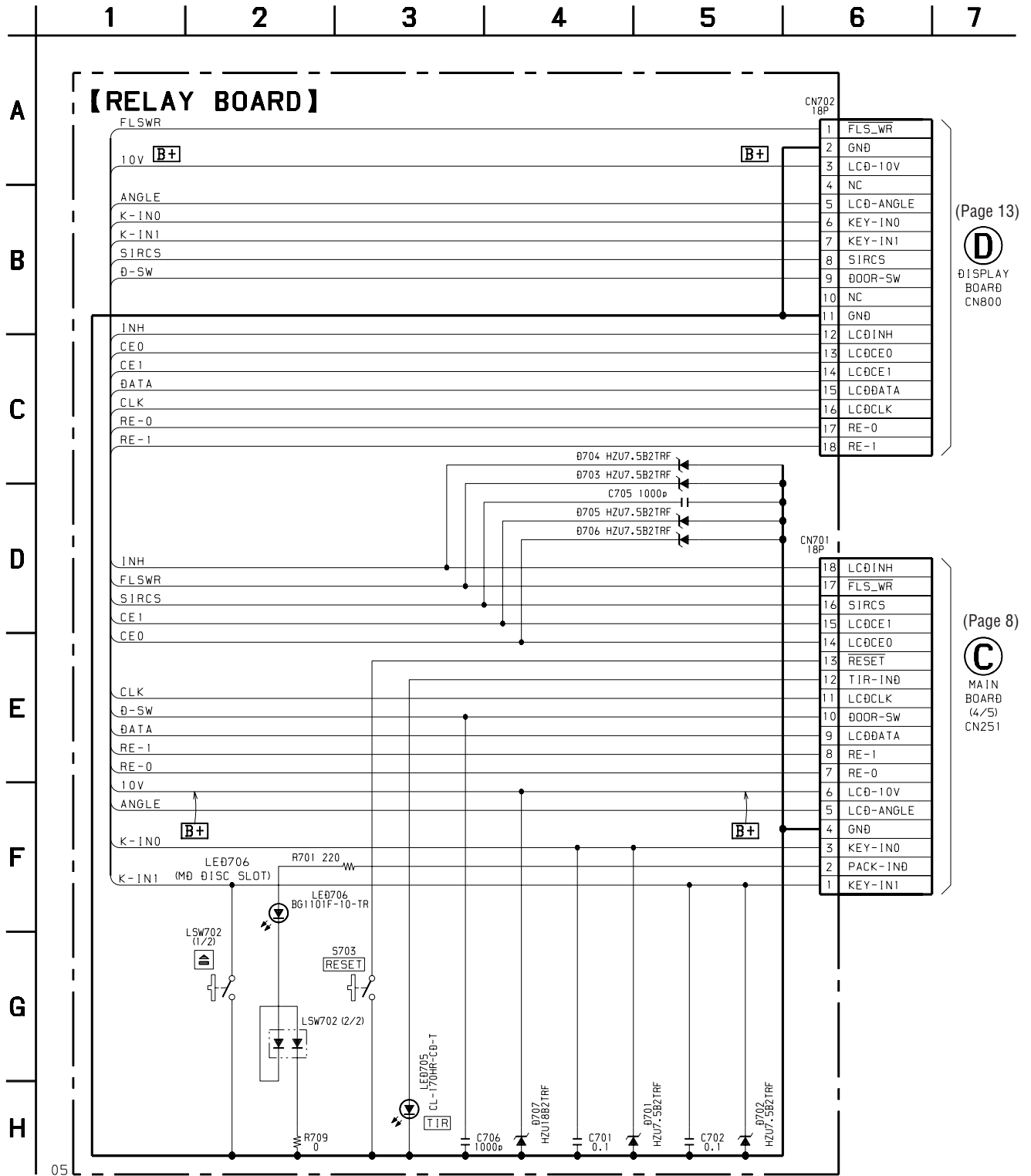


05

12
12

DISPLAY BOARD
CN800
(Page 12)

2-12. SCHEMATIC DIAGRAM – RELAY Board –



3. ELECTRICAL PARTS LIST

DISPLAY

NOTE:

- Due to standardization, replacements in the parts list may be different from the parts specified in the diagrams or the components used on the set.
- -XX and -X mean standardized parts, so they may have some difference from the original one.
- RESISTORS
All resistors are in ohms.
METAL: Metal-film resistor.
METAL OXIDE: Metal oxide-film resistor.
F: nonflammable
- Abbreviation
TYPE A : ENGLISH, SPANISH
TYPE B : ENGLISH, GERMAN
TYPE C : ENGLISH, FRENCH

- Items marked "*" are not stocked since they are seldom required for routine service. Some delay should be anticipated when ordering these items.
- SEMICONDUCTORS
In each case, u: μ , for example:
uA. . : μ A. . uPA. . : μ PA. .
uPB. . : μ PB. . uPC. . : μ PC. .
uPD. . : μ PD. .
- CAPACITORS
uF: μ F
- COILS
uH: μ H

When indicating parts by reference number, please include the board.

Ref. No.	Part No.	Description	Remark	Ref. No.	Part No.	Description	Remark
		DISPLAY BOARD *****				< LIQUID CRYSTAL DISPLAY >	
	1-694-414-11	CONDUCTOR BOARD, CONNENTION (RUBBER CONNECTOR)		LCD900	1-803-633-11	DISPLAY PANEL, LIQUID CRYSTAL	
		< CAPACITOR >				< LED >	
*	3-037-000-01	SHEET, DIFFUSION		LED900	8-719-987-45	LED CL-155Y/PG-CD-TL (ILLUMINATION)	
*	3-037-152-01	BRACKET (LCD)		LED901	8-719-987-45	LED CL-155Y/PG-CD-TL (ILLUMINATION)	
*	3-037-669-01	PLATE (LCD), LIGHT GUIDE		LED902	8-719-987-45	LED CL-155Y/PG-CD-TL (ILLUMINATION)	
		< CAPACITOR >		LED903	8-719-987-45	LED CL-155Y/PG-CD-TL (ILLUMINATION)	
C900	1-164-004-11	CERAMIC CHIP	0.1uF 10% 25V	LED904	8-719-987-45	LED CL-155Y/PG-CD-TL (ILLUMINATION)	
C901	1-107-823-11	CERAMIC CHIP	0.47uF 10% 16V	LED905	8-719-987-45	LED CL-155Y/PG-CD-TL (ILLUMINATION)	
C902	1-164-004-11	CERAMIC CHIP	0.1uF 10% 25V	LED906	8-719-033-13	LED CL-170Y-CD-T (ILLUMINATION)	
C905	1-164-489-11	CERAMIC CHIP	0.22uF 10% 16V	LED907	8-719-033-14	LED CL-170PG-CD-T (ILLUMINATION)	
C920	1-107-826-11	CERAMIC CHIP	0.1uF 10% 16V	LED971	8-719-076-58	LED NSSW440-BRS (LCD BACK LIGHT)	
		< CAPACITOR >		LED972	8-719-076-58	LED NSSW440-BRS (LCD BACK LIGHT)	
C921	1-107-826-11	CERAMIC CHIP	0.1uF 10% 16V	LED973	8-719-076-58	LED NSSW440-BRS (LCD BACK LIGHT)	
C922	1-107-826-11	CERAMIC CHIP	0.1uF 10% 16V	LED974	8-719-076-58	LED NSSW440-BRS (LCD BACK LIGHT)	
C958	1-162-964-11	CERAMIC CHIP	0.001uF 10% 50V	LED975	8-719-076-58	LED NSSW440-BRS (LCD BACK LIGHT)	
C959	1-162-964-11	CERAMIC CHIP	0.001uF 10% 50V	LED976	8-719-076-58	LED NSSW440-BRS (LCD BACK LIGHT)	
C960	1-162-964-11	CERAMIC CHIP	0.001uF 10% 50V			< SWITCH >	
C961	1-162-964-11	CERAMIC CHIP	0.001uF 10% 50V	LSW900	1-762-620-21	SWITCH, KEY BOARD (WITH LED) (OFF)	
C962	1-162-964-11	CERAMIC CHIP	0.001uF 10% 50V	LSW901	1-762-620-21	SWITCH, KEY BOARD (WITH LED) (SOURCE)	
		< CONNECTOR >		LSW902	1-762-620-21	SWITCH, KEY BOARD (WITH LED) (SHIFT)	
CN800	1-778-183-11	PLUG, CONNECTOR 18P		LSW903	1-762-620-21	SWITCH, KEY BOARD (WITH LED) (MODE)	
		< DIODE >		LSW904	1-762-620-21	SWITCH, KEY BOARD (WITH LED) (SOUND)	
D901	8-719-976-99	DIODE HZU5.1B2TRF		LSW905	1-762-620-21	SWITCH, KEY BOARD (WITH LED) (LIST, PTY)	
D902	8-719-064-08	DIODE HZU6.8B2TRF		LSW906	1-762-620-21	SWITCH, KEY BOARD (WITH LED) (DSPL, SA)	
D903	8-719-071-62	DIODE HZU3.3B2TRF		LSW907	1-762-620-21	SWITCH, KEY BOARD (WITH LED) (AF/TA)	
D905	8-719-017-62	DIODE MA8068-L-TX		LSW908	1-762-620-21	SWITCH, KEY BOARD (WITH LED) (TIR)	
D971	8-719-056-73	DIODE UDZ-TE-17-2.7B		LSW909	1-762-620-21	SWITCH, KEY BOARD (WITH LED) (10)	
D971	8-719-071-59	DIODE HZU2.7B2TRF		LSW910	1-762-620-21	SWITCH, KEY BOARD (WITH LED) (9)	
		< IC >		LSW911	1-762-620-21	SWITCH, KEY BOARD (WITH LED) (8)	
IC900	8-759-496-75	IC uPD16432BGC-018-9EU		LSW912	1-762-620-21	SWITCH, KEY BOARD (WITH LED) (7)	
IC910	8-749-012-25	IC RS-170-TU		LSW913	1-762-620-21	SWITCH, KEY BOARD (WITH LED) (6)	
IC920	8-759-580-20	IC uPD16431AGC-7ET		LSW914	1-762-620-21	SWITCH, KEY BOARD (WITH LED) (5)	
IC921	8-759-075-66	IC TA75S01F (TE85L)		LSW915	1-762-620-21	SWITCH, KEY BOARD (WITH LED) (4)	
		< SHORT >		LSW916	1-762-620-21	SWITCH, KEY BOARD (WITH LED) (3)	
JC901	1-216-295-00	SHORT	0	LSW917	1-762-620-21	SWITCH, KEY BOARD (WITH LED) (2)	
				LSW918	1-762-620-21	SWITCH, KEY BOARD (WITH LED) (1)	
						< TRANSISTOR >	
				Q900	8-729-904-66	TRANSISTOR DTD113EK-T-146	
				Q901	8-729-904-66	TRANSISTOR DTD113EK-T-146	

Ref. No.	Part No.	Description	Remark	Ref. No.	Part No.	Description	Remark	
Q902	8-729-424-08	TRANSISTOR	UN2111-TX	R953	1-216-821-11	METAL CHIP 1K 5%	1/16W	
Q903	8-729-424-08	TRANSISTOR	UN2111-TX	R954	1-216-825-11	METAL CHIP 2.2K 5%	1/16W	
Q904	8-729-106-60	TRANSISTOR	2SB1132-T101-QR	R955	1-216-825-11	METAL CHIP 2.2K 5%	1/16W	
Q971	8-729-120-28	TRANSISTOR	2SC2412K-T-146-QR	R956	1-216-825-11	METAL CHIP 2.2K 5%	1/16W	
Q972	8-729-106-60	TRANSISTOR	2SB1132-T101-QR	R957	1-216-825-11	METAL CHIP 2.2K 5%	1/16W	
< RESISTOR >				R958	1-216-825-11	METAL CHIP 2.2K 5%	1/16W	
R901	1-219-286-11	RES, CHIP	680 2%	1/16W	R964	1-216-073-00	METAL CHIP 10K 5%	1/10W
R902	1-219-286-11	RES, CHIP	680 2%	1/16W	R965	1-216-057-00	METAL CHIP 2.2K 5%	1/10W
R903	1-219-286-11	RES, CHIP	680 2%	1/16W	R966	1-216-057-00	METAL CHIP 2.2K 5%	1/10W
R904	1-218-847-11	RES, CHIP	1K 2%	1/16W	R969	1-218-713-11	METAL CHIP 7.5K 0.5%	1/16W
R905	1-218-851-11	RES, CHIP	1.5K 2%	1/16W	R970	1-218-722-11	METAL CHIP 18K 0.5%	1/16W
R906	1-218-851-11	RES, CHIP	1.5K 2%	1/16W	R971	1-216-049-11	RES, CHIP 1K 5%	1/10W
R907	1-216-647-11	METAL CHIP	680 0.5%	1/10W	R972	1-216-057-00	METAL CHIP 2.2K 5%	1/10W
R908	1-218-855-11	RES, CHIP	2.2K 2%	1/16W	R973	1-216-057-00	METAL CHIP 2.2K 5%	1/10W
R909	1-219-286-11	RES, CHIP	680 2%	1/16W	R974	1-216-180-00	RES, CHIP 180 5%	1/8W
R910	1-219-286-11	RES, CHIP	680 2%	1/16W	R975	1-216-180-00	RES, CHIP 180 5%	1/8W
R911	1-218-847-11	RES, CHIP	1K 2%	1/16W	R976	1-216-180-00	RES, CHIP 180 5%	1/8W
R912	1-218-851-11	RES, CHIP	1.5K 2%	1/16W	R977	1-216-825-11	METAL CHIP 2.2K 5%	1/16W
R913	1-218-851-11	RES, CHIP	1.5K 2%	1/16W	R978	1-216-825-11	METAL CHIP 2.2K 5%	1/16W
R914	1-218-855-11	RES, CHIP	2.2K 2%	1/16W	R979	1-216-825-11	METAL CHIP 2.2K 5%	1/16W
R915	1-218-859-11	RES, CHIP	3.3K 2%	1/16W	R980	1-216-825-11	METAL CHIP 2.2K 5%	1/16W
R916	1-218-863-11	RES, CHIP	4.7K 2%	1/16W	R982	1-216-864-11	METAL CHIP 0 5%	1/16W
R917	1-218-867-11	RES, CHIP	6.8K 2%	1/16W	R983	1-216-825-11	METAL CHIP 2.2K 5%	1/16W
R918	1-218-871-11	RES, CHIP	10K 2%	1/16W	R984	1-216-049-11	RES, CHIP 1K 5%	1/10W
R919	1-218-875-11	RES, CHIP	15K 2%	1/16W	< ROTARY ENCODER >			
R920	1-218-879-11	RES, CHIP	22K 2%	1/16W	RE900	1-475-014-11	ENCODER, ROTARY (VOLUME/BASS/TREBLE/ BALANCE/FADER CONTROL)	
R921	1-216-809-11	METAL CHIP	100 5%	1/16W	< SWITCH >			
R922	1-216-809-11	METAL CHIP	100 5%	1/16W	S900	1-771-290-11	SWITCH, SLIDE (SEEK/AMS, ►►►►+, ◀◀◀◀-)	
R923	1-216-809-11	METAL CHIP	100 5%	1/16W	*****			
R924	1-216-845-11	METAL CHIP	100K 5%	1/16W	* A-3317-859-A	MAIN BOARD, COMPLETE (TYPE A)		
R925	1-216-841-11	METAL CHIP	47K 5%	1/16W	* A-3317-860-A	MAIN BOARD, COMPLETE (TYPE B)		
R926	1-216-827-11	METAL CHIP	3.3K 5%	1/16W	* A-3317-861-A	MAIN BOARD, COMPLETE (TYPE C)		
R927	1-216-823-11	METAL CHIP	1.5K 5%	1/16W	*****			
R928	1-216-823-11	METAL CHIP	1.5K 5%	1/16W	* 3-022-317-01	BRACKET (AMP)		
R929	1-216-827-11	METAL CHIP	3.3K 5%	1/16W	* 3-023-841-11	HEAT SINK		
R931	1-216-033-00	METAL CHIP	220 5%	1/10W	7-685-794-09	SCREW +PTT 2.6X10 (S)		
R932	1-216-039-00	METAL CHIP	390 5%	1/10W	< BUZZER >			
R933	1-216-033-00	METAL CHIP	220 5%	1/10W	BZ500	1-504-920-11	BUZZER	
R934	1-216-821-11	METAL CHIP	1K 5%	1/16W	< CAPACITOR >			
R935	1-216-033-00	METAL CHIP	220 5%	1/10W	C101	1-165-319-11	CERAMIC CHIP 0.1uF 50V	
R936	1-216-033-00	METAL CHIP	220 5%	1/10W	C102	1-117-681-11	ELECT CHIP 100uF 20% 16V	
R937	1-216-037-00	METAL CHIP	330 5%	1/10W	C103	1-165-319-11	CERAMIC CHIP 0.1uF 50V	
R938	1-216-037-00	METAL CHIP	330 5%	1/10W	C104	1-117-681-11	ELECT CHIP 100uF 20% 16V	
R939	1-216-194-00	METAL CHIP	680 5%	1/8W	C105	1-165-319-11	CERAMIC CHIP 0.1uF 50V	
R941	1-216-809-11	METAL CHIP	100 5%	1/16W	C106	1-117-681-11	ELECT CHIP 100uF 20% 16V	
R942	1-216-041-00	METAL CHIP	470 5%	1/10W	C107	1-163-235-11	CERAMIC CHIP 22PF 5% 50V	
R943	1-216-025-00	RES, CHIP	100 5%	1/10W	C108	1-115-339-11	CERAMIC CHIP 0.1uF 10% 50V	
R944	1-216-049-11	RES, CHIP	1K 5%	1/10W	C109	1-163-024-00	CERAMIC CHIP 0.018uF 10% 50V	
R945	1-216-829-11	METAL CHIP	4.7K 5%	1/16W	C110	1-163-024-00	CERAMIC CHIP 0.018uF 10% 50V	
R946	1-216-821-11	METAL CHIP	1K 5%	1/16W	C112	1-163-275-11	CERAMIC CHIP 0.001uF 5% 50V	
R947	1-216-841-11	METAL CHIP	47K 5%	1/16W	C113	1-163-275-11	CERAMIC CHIP 0.001uF 5% 50V	
R948	1-216-841-11	METAL CHIP	47K 5%	1/16W				
R949	1-216-809-11	METAL CHIP	100 5%	1/16W				
R950	1-216-809-11	METAL CHIP	100 5%	1/16W				
R951	1-216-809-11	METAL CHIP	100 5%	1/16W				
R952	1-216-843-11	METAL CHIP	68K 5%	1/16W				

MAIN

Ref. No.	Part No.	Description			Remark	Ref. No.	Part No.	Description			Remark
C114	1-163-125-00	CERAMIC CHIP	220PF	5%	50V	C403	1-117-681-11	ELECT CHIP	100uF	20%	16V
C115	1-163-275-11	CERAMIC CHIP	0.001uF	5%	50V	C404	1-117-681-11	ELECT CHIP	100uF	20%	16V
C131	1-115-339-11	CERAMIC CHIP	0.1uF	10%	50V	C405	1-115-339-11	CERAMIC CHIP	0.1uF	10%	50V
C132	1-115-339-11	CERAMIC CHIP	0.1uF	10%	50V	C406	1-126-395-11	ELECT	22uF	20%	16V
C133	1-162-964-11	CERAMIC CHIP	0.001uF	10%	50V	C407	1-115-339-11	CERAMIC CHIP	0.1uF	10%	50V
C134	1-162-964-11	CERAMIC CHIP	0.001uF	10%	50V	C408	1-117-681-11	ELECT CHIP	100uF	20%	16V
C135	1-163-263-11	CERAMIC CHIP	330PF	5%	50V	C409	1-115-339-11	CERAMIC CHIP	0.1uF	10%	50V
C136	1-162-915-11	CERAMIC CHIP	10PF	0.5PF	50V	C410	1-124-779-00	ELECT CHIP	10uF	20%	16V
C137	1-115-339-11	CERAMIC CHIP	0.1uF	10%	50V	C422	1-163-021-11	CERAMIC CHIP	0.01uF	10%	50V
C138	1-107-823-11	CERAMIC CHIP	0.47uF	10%	16V	C423	1-163-021-11	CERAMIC CHIP	0.01uF	10%	50V
C139	1-104-760-11	CERAMIC CHIP	0.047uF	10%	50V	C424	1-117-681-11	ELECT CHIP	100uF	20%	16V
C140	1-162-964-11	CERAMIC CHIP	0.001uF	10%	50V	C425	1-126-204-11	ELECT CHIP	47uF	20%	16V
C151	1-104-913-11	TANTALUM CHIP	10uF	20%	16V	C431	1-115-339-11	CERAMIC CHIP	0.1uF	10%	50V
C152	1-115-339-11	CERAMIC CHIP	0.1uF	10%	50V	C441	1-163-021-11	CERAMIC CHIP	0.01uF	10%	50V
C153	1-162-927-11	CERAMIC CHIP	100PF	5%	50V	C463	1-162-970-11	CERAMIC CHIP	0.01uF	10%	25V
C154	1-162-927-11	CERAMIC CHIP	100PF	5%	50V	C464	1-162-970-11	CERAMIC CHIP	0.01uF	10%	25V
C155	1-104-913-11	TANTALUM CHIP	10uF	20%	16V	C465	1-162-970-11	CERAMIC CHIP	0.01uF	10%	25V
C156	1-115-339-11	CERAMIC CHIP	0.1uF	10%	50V	C466	1-162-970-11	CERAMIC CHIP	0.01uF	10%	25V
C157	1-163-009-11	CERAMIC CHIP	0.001uF	10%	50V	C467	1-162-970-11	CERAMIC CHIP	0.01uF	10%	25V
C158	1-163-251-11	CERAMIC CHIP	100PF	5%	50V	C468	1-162-970-11	CERAMIC CHIP	0.01uF	10%	25V
C159	1-163-009-11	CERAMIC CHIP	0.001uF	10%	50V	C471	1-109-982-11	CERAMIC CHIP	1uF	10%	10V
C161	1-107-826-11	CERAMIC CHIP	0.1uF	10%	16V	C472	1-115-566-11	CERAMIC CHIP	4.7uF	10%	10V
C162	1-164-315-11	CERAMIC CHIP	470PF	5%	50V	C473	1-117-681-11	ELECT CHIP	100uF	20%	16V
C167	1-163-019-00	CERAMIC CHIP	0.0068uF	10%	50V	C474	1-164-346-11	CERAMIC CHIP	1uF		16V
C168	1-163-019-00	CERAMIC CHIP	0.0068uF	10%	50V	C475	1-126-395-11	ELECT	22uF	20%	16V
C169	1-164-344-11	CERAMIC CHIP	0.068uF	10%	25V	C477	1-115-469-31	ELECT	4700uF	99%	16V
C170	1-163-019-00	CERAMIC CHIP	0.0068uF	10%	50V	C479	1-115-339-11	CERAMIC CHIP	0.1uF	10%	50V
C171	1-163-009-11	CERAMIC CHIP	0.001uF	10%	50V	C481	1-164-005-11	CERAMIC CHIP	0.47uF		25V
C181	1-126-204-11	ELECT CHIP	47uF	20%	16V	C482	1-126-204-11	ELECT CHIP	47uF	20%	16V
C182	1-115-339-11	CERAMIC CHIP	0.1uF	10%	50V	C483	1-126-197-11	ELECT CHIP	10uF	20%	50V
C254	1-115-339-11	CERAMIC CHIP	0.1uF	10%	50V	C485	1-127-820-11	CERAMIC	4.7uF		16V
C271	1-115-339-11	CERAMIC CHIP	0.1uF	10%	50V	C486	1-127-820-11	CERAMIC	4.7uF		16V
C272	1-115-339-11	CERAMIC CHIP	0.1uF	10%	50V	C487	1-127-820-11	CERAMIC	4.7uF		16V
C291	1-162-927-11	CERAMIC CHIP	100PF	5%	50V	C488	1-127-820-11	CERAMIC	4.7uF		16V
C292	1-162-927-11	CERAMIC CHIP	100PF	5%	50V	C489	1-164-489-11	CERAMIC CHIP	0.22uF	10%	16V
C293	1-163-021-11	CERAMIC CHIP	0.01uF	10%	50V	C490	1-164-489-11	CERAMIC CHIP	0.22uF	10%	16V
C301	1-115-339-11	CERAMIC CHIP	0.1uF	10%	50V	C491	1-164-489-11	CERAMIC CHIP	0.22uF	10%	16V
C314	1-115-339-11	CERAMIC CHIP	0.1uF	10%	50V	C492	1-164-489-11	CERAMIC CHIP	0.22uF	10%	16V
C316	1-115-339-11	CERAMIC CHIP	0.1uF	10%	50V	C501	1-115-339-11	CERAMIC CHIP	0.1uF	10%	50V
C319	1-115-339-11	CERAMIC CHIP	0.1uF	10%	50V	C502	1-162-964-11	CERAMIC CHIP	0.001uF	10%	50V
C320	1-115-339-11	CERAMIC CHIP	0.1uF	10%	50V	C503	1-162-919-11	CERAMIC CHIP	22PF	5%	50V
C321	1-126-246-11	ELECT CHIP	220uF	20%	4V	C504	1-162-919-11	CERAMIC CHIP	22PF	5%	50V
C323	1-162-919-11	CERAMIC CHIP	22PF	5%	50V	C506	1-162-964-11	CERAMIC CHIP	0.001uF	10%	50V
C324	1-162-919-11	CERAMIC CHIP	22PF	5%	50V	C510	1-115-339-11	CERAMIC CHIP	0.1uF	10%	50V
C327	1-115-339-11	CERAMIC CHIP	0.1uF	10%	50V	C511	1-125-565-11	DOUBLE LAYER	0.22F		5.5V
C328	1-115-339-11	CERAMIC CHIP	0.1uF	10%	50V	C512	1-125-565-11	DOUBLE LAYER	0.22F		5.5V
C329	1-115-339-11	CERAMIC CHIP	0.1uF	10%	50V	C513	1-162-964-11	CERAMIC CHIP	0.001uF	10%	50V
C333	1-163-009-11	CERAMIC CHIP	0.001uF	10%	50V	C514	1-163-017-00	CERAMIC CHIP	0.0047uF	5%	50V
C334	1-115-339-11	CERAMIC CHIP	0.1uF	10%	50V	C535	1-115-339-11	CERAMIC CHIP	0.1uF	10%	50V
C335	1-115-339-11	CERAMIC CHIP	0.1uF	10%	50V	C557	1-162-964-11	CERAMIC CHIP	0.001uF	10%	50V
C336	1-115-339-11	CERAMIC CHIP	0.1uF	10%	50V	C562	1-125-817-11	CERAMIC CHIP	10uF	10%	6.3V
C337	1-104-851-11	TANTALUM CHIP	10uF	20%	10V	C601	1-164-506-11	CERAMIC CHIP	4.7uF		16V
C338	1-162-919-11	CERAMIC CHIP	22PF	5%	50V	C602	1-164-506-11	CERAMIC CHIP	4.7uF		16V
C339	1-162-964-11	CERAMIC CHIP	0.001uF	10%	50V	C603	1-162-919-11	CERAMIC CHIP	22PF	5%	50V
C341	1-115-339-11	CERAMIC CHIP	0.1uF	10%	50V	C604	1-162-919-11	CERAMIC CHIP	22PF	5%	50V
C353	1-115-339-11	CERAMIC CHIP	0.1uF	10%	50V	C605	1-115-412-11	CERAMIC CHIP	680PF	5%	25V
C401	1-117-681-11	ELECT CHIP	100uF	20%	16V	C606	1-115-412-11	CERAMIC CHIP	680PF	5%	25V
C402	1-126-246-11	ELECT CHIP	220uF	20%	4V						

Ref. No.	Part No.	Description	Remark	Ref. No.	Part No.	Description	Remark
C607	1-115-412-11	CERAMIC CHIP	680PF 5% 25V				
C608	1-115-412-11	CERAMIC CHIP	680PF 5% 25V	C682	1-164-506-11	CERAMIC CHIP	4.7uF 16V
C609	1-163-021-11	CERAMIC CHIP	0.01uF 10% 50V	C683	1-162-964-11	CERAMIC CHIP	0.001uF 10% 50V
C611	1-124-779-00	ELECT CHIP	10uF 20% 16V	C684	1-162-964-11	CERAMIC CHIP	0.001uF 10% 50V
C612	1-162-970-11	CERAMIC CHIP	0.01uF 10% 25V	C685	1-162-970-11	CERAMIC CHIP	0.01uF 10% 25V
C613	1-164-506-11	CERAMIC CHIP	4.7uF 16V	C691	1-163-021-11	CERAMIC CHIP	0.01uF 10% 50V
C615	1-126-204-11	ELECT CHIP	47uF 20% 16V	C696	1-124-779-00	ELECT CHIP	10uF 20% 16V
C616	1-164-506-11	CERAMIC CHIP	4.7uF 16V	C701	1-115-339-11	CERAMIC CHIP	0.1uF 10% 50V
C617	1-162-919-11	CERAMIC CHIP	22PF 5% 50V	C705	1-163-009-11	CERAMIC CHIP	0.001uF 10% 50V
C618	1-117-681-11	ELECT CHIP	100uF 20% 16V	C706	1-163-235-11	CERAMIC CHIP	22PF 5% 50V
C619	1-117-681-11	ELECT CHIP	100uF 20% 16V	C707	1-163-235-11	CERAMIC CHIP	22PF 5% 50V
C620	1-162-919-11	CERAMIC CHIP	22PF 5% 50V	C751	1-164-505-11	CERAMIC CHIP	2.2uF 16V
C621	1-124-779-00	ELECT CHIP	10uF 20% 16V	C752	1-164-505-11	CERAMIC CHIP	2.2uF 16V
C622	1-124-779-00	ELECT CHIP	10uF 20% 16V	C753	1-164-700-11	CERAMIC CHIP	0.68uF 16V
C623	1-162-964-11	CERAMIC CHIP	0.001uF 10% 50V	C754	1-164-505-11	CERAMIC CHIP	2.2uF 16V
C624	1-162-964-11	CERAMIC CHIP	0.001uF 10% 50V	C755	1-163-037-11	CERAMIC CHIP	0.022uF 10% 25V
C626	1-115-339-11	CERAMIC CHIP	0.1uF 10% 50V	C756	1-164-505-11	CERAMIC CHIP	2.2uF 16V
C631	1-164-506-11	CERAMIC CHIP	4.7uF 16V	C757	1-115-185-11	CERAMIC CHIP	0.033uF 10% 50V
C632	1-164-506-11	CERAMIC CHIP	4.7uF 16V	C771	1-164-506-11	CERAMIC CHIP	4.7uF 16V
C633	1-162-919-11	CERAMIC CHIP	22PF 5% 50V	C772	1-164-505-11	CERAMIC CHIP	2.2uF 16V
C634	1-162-919-11	CERAMIC CHIP	22PF 5% 50V	C773	1-164-505-11	CERAMIC CHIP	2.2uF 16V
C635	1-115-412-11	CERAMIC CHIP	680PF 5% 25V	C774	1-164-506-11	CERAMIC CHIP	4.7uF 16V
C636	1-115-412-11	CERAMIC CHIP	680PF 5% 25V	C782	1-104-913-11	TANTALUM CHIP	10uF 20% 16V
C637	1-115-412-11	CERAMIC CHIP	680PF 5% 25V	C784	1-119-751-11	TANTALUM CHIP	22uF 20% 16V
C638	1-115-412-11	CERAMIC CHIP	680PF 5% 25V	C785	1-115-339-11	CERAMIC CHIP	0.1uF 10% 50V
C639	1-163-021-11	CERAMIC CHIP	0.01uF 10% 50V	C786	1-164-506-11	CERAMIC CHIP	4.7uF 16V
C641	1-124-779-00	ELECT CHIP	10uF 20% 16V	C787	1-164-230-11	CERAMIC CHIP	220PF 5% 50V
C642	1-162-970-11	CERAMIC CHIP	0.01uF 10% 25V	C788	1-164-230-11	CERAMIC CHIP	220PF 5% 50V
C643	1-164-506-11	CERAMIC CHIP	4.7uF 16V	C789	1-163-125-00	CERAMIC CHIP	220PF 5% 50V
C645	1-126-204-11	ELECT CHIP	47uF 20% 16V	C796	1-164-506-11	CERAMIC CHIP	4.7uF 16V
C646	1-164-506-11	CERAMIC CHIP	4.7uF 16V	C797	1-164-230-11	CERAMIC CHIP	220PF 5% 50V
C647	1-162-919-11	CERAMIC CHIP	22PF 5% 50V	C798	1-164-230-11	CERAMIC CHIP	220PF 5% 50V
C648	1-117-681-11	ELECT CHIP	100uF 20% 16V	C799	1-163-125-00	CERAMIC CHIP	220PF 5% 50V
C649	1-117-681-11	ELECT CHIP	100uF 20% 16V	C901	1-125-817-11	CERAMIC CHIP	10uF 10% 6.3V
C650	1-162-919-11	CERAMIC CHIP	22PF 5% 50V	C903	1-115-339-11	CERAMIC CHIP	0.1uF 10% 50V
C651	1-124-779-00	ELECT CHIP	10uF 20% 16V	C904	1-163-133-00	CERAMIC CHIP	470PF 5% 50V
C652	1-124-779-00	ELECT CHIP	10uF 20% 16V	C905	1-162-920-11	CERAMIC CHIP	27PF 5% 50V
C653	1-162-964-11	CERAMIC CHIP	0.001uF 10% 50V	C906	1-162-920-11	CERAMIC CHIP	27PF 5% 50V
C654	1-162-964-11	CERAMIC CHIP	0.001uF 10% 50V	C909	1-164-161-11	CERAMIC CHIP	0.0022uF 10% 100V
C656	1-115-339-11	CERAMIC CHIP	0.1uF 10% 50V	C910	1-104-913-11	TANTALUM CHIP	10uF 20% 16V
C657	1-163-243-11	CERAMIC CHIP	47PF 5% 50V	C911	1-162-966-11	CERAMIC CHIP	0.0022uF 10% 50V
C658	1-163-243-11	CERAMIC CHIP	47PF 5% 50V	C912	1-164-739-11	CERAMIC CHIP	560PF 5% 50V
C659	1-163-243-11	CERAMIC CHIP	47PF 5% 50V	C913	1-164-505-11	CERAMIC CHIP	2.2uF 16V
C660	1-163-243-11	CERAMIC CHIP	47PF 5% 50V	C914	1-162-959-11	CERAMIC CHIP	330PF 5% 50V
C661	1-164-506-11	CERAMIC CHIP	4.7uF 16V	C915	1-115-339-11	CERAMIC CHIP	0.1uF 10% 50V
C662	1-162-915-11	CERAMIC CHIP	10PF 0.5PF 50V	C951	1-125-817-11	CERAMIC CHIP	10uF 10% 6.3V
C664	1-162-915-11	CERAMIC CHIP	10PF 0.5PF 50V	C952	1-125-817-11	CERAMIC CHIP	10uF 10% 6.3V
C665	1-163-137-00	CERAMIC CHIP	680PF 5% 50V	C953	1-163-125-00	CERAMIC CHIP	220PF 5% 50V
C666	1-163-137-00	CERAMIC CHIP	680PF 5% 50V	C954	1-115-185-11	CERAMIC CHIP	0.033uF 10% 50V
C669	1-162-970-11	CERAMIC CHIP	0.01uF 10% 25V	C955	1-163-229-11	CERAMIC CHIP	12PF 5% 50V
C670	1-163-235-11	CERAMIC CHIP	22PF 5% 50V	C956	1-163-229-11	CERAMIC CHIP	12PF 5% 50V
C672	1-162-970-11	CERAMIC CHIP	0.01uF 10% 25V	C957	1-115-339-11	CERAMIC CHIP	0.1uF 10% 50V
C673	1-125-838-11	CERAMIC CHIP	2.2uF 10% 6.3V	C958	1-163-009-11	CERAMIC CHIP	0.001uF 10% 50V
C674	1-125-838-11	CERAMIC CHIP	2.2uF 10% 6.3V	C959	1-115-339-11	CERAMIC CHIP	0.1uF 10% 50V
C675	1-125-838-11	CERAMIC CHIP	2.2uF 10% 6.3V			< CONNECTOR/JACK >	
C676	1-125-838-11	CERAMIC CHIP	2.2uF 10% 6.3V				
C677	1-125-838-11	CERAMIC CHIP	2.2uF 10% 6.3V				
C681	1-164-506-11	CERAMIC CHIP	4.7uF 16V	* CN101	1-506-984-11	PIN, CONNECTOR (PC BOARD) 2P	
				CN202	1-764-441-21	CONNECTOR, FPC 30P	

MAIN

Ref. No.	Part No.	Description	Remark	Ref. No.	Part No.	Description	Remark
CN251	1-770-410-11	CONNECTOR, BOARD TO BOARD 18P		D466	8-719-071-25	DIODE HZU18B2TRF	
CN271	1-580-907-31	PLUG, CONNECTOR (BUS CONTROL IN)		D467	8-719-053-18	DIODE 1SR154-400TE-25	
* CN291	1-564-506-11	PLUG, CONNECTOR 3P		D468	8-719-053-18	DIODE 1SR154-400TE-25	
CN401	1-779-823-21	CONNECTOR, BOARD TO BOARD 30P		D471	8-719-073-01	DIODE MA111-TX	
CNJ252	1-691-258-21	JACK (MIC)		D472	8-719-073-01	DIODE MA111-TX	
CNJ272	1-566-822-41	JACK (REMOTE IN)		D477	8-719-049-38	DIODE 1N5404TU	
CNP401	1-774-701-11	PIN, CONNECTOR 16P (POWER)		D481	8-719-076-95	DIODE PTZ-TE25-18B	
CNP601	1-774-700-21	JACK, PIN 6P (LINE OUT FRONT, LINE OUT REAR, BUS AUDIO IN)		D482	8-719-076-95	DIODE PTZ-TE25-18B	
		< COMPOSITION CIRCUIT BLOCK >		D483	8-719-076-95	DIODE PTZ-TE25-18B	
CP101	1-803-335-21	ABSORBER, CHIP SURGE		D484	8-719-076-95	DIODE PTZ-TE25-18B	
		< DIODE >		D485	8-719-076-95	DIODE PTZ-TE25-18B	
D131	8-719-941-23	DIODE DA204UT106		D486	8-719-076-95	DIODE PTZ-TE25-18B	
D181	8-719-047-98	DIODE HZU5.6B2TRF		D487	8-719-076-95	DIODE PTZ-TE25-18B	
D204	8-719-914-44	DIODE DAP202K-T-146		D488	8-719-076-95	DIODE PTZ-TE25-18B	
D251	8-719-071-71	DIODE HZU8.2B2TRF		D489	8-719-064-03	DIODE HZU16B2TRF	
D252	8-719-071-71	DIODE HZU8.2B2TRF		D491	8-719-062-37	DIODE HZU3.9B1TRF	
D253	8-719-071-71	DIODE HZU8.2B2TRF		D527	8-719-073-01	DIODE MA111-TX	
D254	8-719-914-44	DIODE DAP202K-T-146		D546	8-719-071-71	DIODE HZU8.2B2TRF	
D255	8-719-071-71	DIODE HZU8.2B2TRF		D555	8-719-976-99	DIODE HZU5.1B2TRF	
D256	8-719-071-71	DIODE HZU8.2B2TRF		D601	8-719-941-23	DIODE DA204UT106	
D257	8-719-071-71	DIODE HZU8.2B2TRF		D631	8-719-941-23	DIODE DA204UT106	
D258	8-719-071-71	DIODE HZU8.2B2TRF		D661	8-719-941-23	DIODE DA204UT106	
D259	8-719-071-71	DIODE HZU8.2B2TRF		D701	8-719-073-01	DIODE MA111-TX	
D260	8-719-071-71	DIODE HZU8.2B2TRF		D702	8-719-073-01	DIODE MA111-TX	
D261	8-719-071-71	DIODE HZU8.2B2TRF		D751	8-719-062-37	DIODE HZU3.9B1TRF	
D262	8-719-071-71	DIODE HZU8.2B2TRF				< FERRITE BEAD/SHORT >	
D263	8-719-071-25	DIODE HZU18B2TRF		FB201	1-216-295-00	SHORT 0	
D264	8-719-071-25	DIODE HZU18B2TRF		FB202	1-216-295-00	SHORT 0	
D265	8-719-071-25	DIODE HZU18B2TRF		FB203	1-216-295-00	SHORT 0	
D271	8-719-938-75	DIODE SB05-05CP-TB		FB204	1-500-240-22	FERRITE 0uH	
D272	8-719-064-08	DIODE HZU6.8B2TRF		FB205	1-500-240-22	FERRITE 0uH	
D273	8-719-071-25	DIODE HZU18B2TRF		FB206	1-500-240-22	FERRITE 0uH	
D274	8-719-071-25	DIODE HZU18B2TRF		FB301	1-500-240-22	FERRITE 0uH	
D275	8-719-064-03	DIODE HZU16B2TRF		FB302	1-216-295-00	SHORT 0	
D276	8-719-105-99	DIODE HZU6.2B2TRF		FB303	1-500-240-22	FERRITE 0uH	
D277	8-719-073-01	DIODE MA111-TX		FB305	1-500-240-22	FERRITE 0uH	
D278	8-719-073-01	DIODE MA111-TX		FB401	1-216-295-00	SHORT 0	
D279	8-719-071-71	DIODE HZU8.2B2TRF		FB402	1-500-240-22	FERRITE 0uH	
D280	8-719-071-71	DIODE HZU8.2B2TRF		FB901	1-500-241-22	FERRITE 0uH	
D282	8-719-073-01	DIODE MA111-TX				< IC >	
D283	8-719-073-01	DIODE MA111-TX		IC131	8-759-422-21	IC NJM4580V (TE2)	
D291	8-719-941-23	DIODE DA204UT106		IC151	8-759-586-54	IC TDA7427ADTR	
D403	8-719-914-43	DIODE DAN202K-T-146		IC271	8-759-593-98	IC BA8270FV-E2	
D421	8-719-977-03	DIODE MA8056-H-TX		IC300	8-752-395-98	IC CXD2727Q	
D422	8-719-981-59	DIODE FC805-TL		IC351	8-759-524-05	IC TC74VHC126FT (EL)	
D423	8-719-938-75	DIODE SB05-05CP-TB		IC401	8-759-710-88	IC NJM431U-TE2	
D424	8-719-981-59	DIODE FC805-TL		IC402	8-759-643-48	IC BA00ASFP-E2	
D431	8-719-064-08	DIODE HZU6.8B2TRF		IC403	8-759-476-23	IC BA08SFP-E2	
D432	8-719-914-43	DIODE DAN202K-T-146		IC404	8-759-460-72	IC BA033FP-E2	
D441	8-719-914-43	DIODE DAN202K-T-146		IC421	8-759-525-98	IC RN5VL45CA-TL	
D442	8-719-064-08	DIODE HZU6.8B2TRF		IC481	8-759-486-44	IC TDA7386	
D461	8-719-420-51	DIODE MA729-TX		IC500	8-759-593-50	IC MB90574APMT-G-215-BND	
D462	8-719-071-25	DIODE HZU18B2TRF		IC506	8-759-571-49	IC XC61AN4102PR	
D463	8-719-071-25	DIODE HZU18B2TRF		IC601	8-759-385-17	IC NJM4580E (TE2)	
D464	8-719-071-25	DIODE HZU18B2TRF		IC602	8-759-594-52	IC LM1973MX	

Ref. No.	Part No.	Description	Remark	Ref. No.	Part No.	Description	Remark
IC603	8-759-394-84	IC NJM072BM-TE2		Q271	1-801-806-11	TRANSISTOR	DTC144EK-T146
IC604	8-759-593-97	IC NJM2160AM-TE2		Q272	8-729-028-91	TRANSISTOR	DTA144EUA-T106
IC631	8-759-385-17	IC NJM4580E (TE2)		Q273	8-729-120-28	TRANSISTOR	2SC2412K-T-146-QR
IC632	8-759-594-52	IC LM1973MX		Q274	8-729-120-28	TRANSISTOR	2SC2412K-T-146-QR
IC633	8-759-394-84	IC NJM072BM-TE2		Q275	8-729-028-91	TRANSISTOR	DTA144EUA-T106
IC634	8-759-593-97	IC NJM2160AM-TE2		Q401	8-729-920-85	TRANSISTOR	2SD1664-T101-QR
IC661	8-759-385-17	IC NJM4580E (TE2)		Q402	8-729-106-60	TRANSISTOR	2SB1132-T101-QR
IC663	8-759-394-84	IC NJM072BM-TE2		Q403	1-801-806-11	TRANSISTOR	DTC144EK-T146
IC691	8-759-488-29	IC TC7W66FU (TE12L)		Q421	8-729-822-84	TRANSISTOR	2SB1202FAT-TL
IC701	8-759-648-83	IC HD6472355F20A08F		Q422	8-729-230-49	TRANSISTOR	2SC2712-YG-TE85L
IC702	8-759-277-63	IC TC7W14FU (TE12R)		Q423	1-801-806-11	TRANSISTOR	DTC144EK-T146
IC752	8-759-488-29	IC TC7W66FU (TE12L)		Q424	1-801-806-11	TRANSISTOR	DTC144EK-T146
IC771	8-759-473-80	IC BA3131FS-E2		Q431	8-729-120-28	TRANSISTOR	2SC2412K-T-146-QR
IC901	8-759-492-59	IC SAA6588T-118		Q441	8-729-905-35	TRANSISTOR	2SC4081T106R
IC951	8-759-374-66	IC MSM6688GS-2K		Q451	8-729-905-35	TRANSISTOR	2SC4081T106R
IC952	8-759-180-46	IC MSM6685JSDR1		Q461	8-729-049-13	FET	UPA1853GR-9JG-E1
		< SHORT >		Q462	8-729-429-92	TRANSISTOR	XN1211-TX
JC100	1-216-295-00	SHORT	0	Q471	1-801-806-11	TRANSISTOR	DTC144EK-T146
JC101	1-216-295-00	SHORT	0	Q472	8-729-026-53	TRANSISTOR	2SA1576A-T106-QR
JC103	1-216-296-00	SHORT	0	Q473	8-729-921-25	TRANSISTOR	FMC2-T148
JC201	1-216-295-00	SHORT	0	Q474	8-729-921-25	TRANSISTOR	FMC2-T148
JC207	1-216-295-00	SHORT	0	Q501	8-729-028-91	TRANSISTOR	DTA144EUA-T106
JC251	1-216-295-00	SHORT	0	Q504	1-801-806-11	TRANSISTOR	DTC144EK-T146
JC300	1-216-295-00	SHORT	0	Q523	8-729-024-31	TRANSISTOR	XN1111-TX
JC351	1-216-295-00	SHORT	0	Q601	8-729-400-56	TRANSISTOR	2SD1328-T-TX
JC401	1-216-295-00	SHORT	0	Q602	8-729-400-56	TRANSISTOR	2SD1328-T-TX
JC901	1-216-296-00	SHORT	0	Q631	8-729-400-56	TRANSISTOR	2SD1328-T-TX
		< COIL >		Q632	8-729-400-56	TRANSISTOR	2SD1328-T-TX
L181	1-412-060-11	INDUCTOR CHIP 22uH		Q661	8-729-400-56	TRANSISTOR	2SD1328-T-TX
L401	1-412-058-11	INDUCTOR CHIP 10uH		Q662	8-729-400-56	TRANSISTOR	2SD1328-T-TX
L402	1-412-054-21	INDUCTOR CHIP 2.2uH		Q691	8-729-029-14	TRANSISTOR	DTC144EUA-T106
L403	1-412-054-21	INDUCTOR CHIP 2.2uH		Q751	8-729-921-25	TRANSISTOR	FMC2-T148
L404	1-412-058-11	INDUCTOR CHIP 10uH		Q752	8-729-047-71	TRANSISTOR	FMG12-T-148
L506	1-412-060-11	INDUCTOR CHIP 22uH		Q753	8-729-920-21	TRANSISTOR	DTC314TK-T-146
L701	1-412-060-11	INDUCTOR CHIP 22uH		Q754	8-729-429-92	TRANSISTOR	XN1211-TX
L901	1-412-058-11	INDUCTOR CHIP 10uH		Q901	8-729-921-25	TRANSISTOR	FMC2-T148
L951	1-412-060-11	INDUCTOR CHIP 22uH				< RESISTOR >	
L952	1-412-060-11	INDUCTOR CHIP 22uH		R101	1-216-025-00	RES, CHIP	100 5% 1/10W
		< TRANSISTOR >		R102	1-216-037-00	METAL CHIP	330 5% 1/10W
Q130	8-729-905-35	TRANSISTOR	2SC4081T106R	R104	1-216-073-00	METAL CHIP	10K 5% 1/10W
Q131	8-729-029-14	TRANSISTOR	DTC144EUA-T106	R105	1-216-081-00	METAL CHIP	22K 5% 1/10W
Q132	8-729-921-25	TRANSISTOR	FMC2-T148	R106	1-216-057-00	METAL CHIP	2.2K 5% 1/10W
Q133	8-729-905-35	TRANSISTOR	2SC4081T106R	R111	1-216-296-00	SHORT	0
Q134	8-729-029-14	TRANSISTOR	DTC144EUA-T106	R114	1-216-864-11	METAL CHIP	0 5% 1/16W
Q180	8-729-904-63	TRANSISTOR	DTB123YK-T-146	R124	1-216-037-00	METAL CHIP	330 5% 1/10W
Q181	8-729-029-14	TRANSISTOR	DTC144EUA-T106	R131	1-216-845-11	METAL CHIP	100K 5% 1/16W
Q182	8-729-904-63	TRANSISTOR	DTB123YK-T-146	R132	1-216-825-11	METAL CHIP	2.2K 5% 1/16W
Q183	8-729-029-14	TRANSISTOR	DTC144EUA-T106	R133	1-216-821-11	METAL CHIP	1K 5% 1/16W
Q185	8-729-920-85	TRANSISTOR	2SD1664-T101-QR	R135	1-216-833-11	RES, CHIP	10K 5% 1/16W
Q251	8-729-025-48	TRANSISTOR	XN4381-TX	R136	1-216-065-00	RES, CHIP	4.7K 5% 1/10W
Q252	8-729-025-48	TRANSISTOR	XN4381-TX	R137	1-216-065-00	RES, CHIP	4.7K 5% 1/10W
Q253	1-801-806-11	TRANSISTOR	DTC144EK-T146	R138	1-216-057-00	METAL CHIP	2.2K 5% 1/10W
Q254	8-729-026-53	TRANSISTOR	2SA1576A-T106-QR	R139	1-216-825-11	METAL CHIP	2.2K 5% 1/16W
Q255	8-729-905-35	TRANSISTOR	2SC4081T106R	R140	1-216-069-00	METAL CHIP	6.8K 5% 1/10W
Q256	8-729-106-60	TRANSISTOR	2SB1132-T101-QR	R141	1-216-845-11	METAL CHIP	100K 5% 1/16W
				R142	1-216-121-00	RES, CHIP	1M 5% 1/10W
				R143	1-216-025-00	RES, CHIP	100 5% 1/10W

MAIN

Ref. No.	Part No.	Description	Quantity	Unit	Remark	Ref. No.	Part No.	Description	Quantity	Unit	Remark
R151	1-216-017-00	RES, CHIP	47	5%	1/10W	R402	1-216-045-00	METAL CHIP	680	5%	1/10W
R153	1-216-001-00	METAL CHIP	10	5%	1/10W	R403	1-216-033-00	METAL CHIP	220	5%	1/10W
R154	1-216-813-11	METAL CHIP	220	5%	1/16W	R404	1-216-041-00	METAL CHIP	470	5%	1/10W
R155	1-216-813-11	METAL CHIP	220	5%	1/16W	R405	1-216-045-00	METAL CHIP	680	5%	1/10W
R157	1-216-295-00	SHORT	0			R406	1-216-065-00	RES, CHIP	4.7K	5%	1/10W
R158	1-216-073-00	METAL CHIP	10K	5%	1/10W	R408	1-216-295-00	SHORT	0		
R159	1-216-073-00	METAL CHIP	10K	5%	1/10W	R412	1-216-295-00	SHORT	0		
R160	1-216-097-00	RES, CHIP	100K	5%	1/10W	R421	1-216-089-00	RES, CHIP	47K	5%	1/10W
R161	1-216-077-00	RES, CHIP	15K	5%	1/10W	R422	1-216-680-11	METAL CHIP	16K	0.5%	1/10W
R162	1-216-083-00	METAL CHIP	27K	5%	1/10W	R423	1-216-661-11	METAL CHIP	2.7K	0.5%	1/10W
R181	1-216-057-00	METAL CHIP	2.2K	5%	1/10W	R430	1-216-821-11	METAL CHIP	1K	5%	1/16W
R182	1-216-065-00	RES, CHIP	4.7K	5%	1/10W	R431	1-216-081-00	METAL CHIP	22K	5%	1/10W
R202	1-216-295-00	SHORT	0			R432	1-216-081-00	METAL CHIP	22K	5%	1/10W
R251	1-218-710-11	METAL CHIP	5.6K	0.5%	1/16W	R434	1-216-057-00	METAL CHIP	2.2K	5%	1/10W
R252	1-218-704-11	METAL CHIP	3.3K	0.5%	1/16W	R441	1-216-839-11	METAL CHIP	33K	5%	1/16W
R253	1-216-845-11	METAL CHIP	100K	5%	1/16W	R442	1-216-841-11	METAL CHIP	47K	5%	1/16W
R254	1-216-049-11	RES, CHIP	1K	5%	1/10W	R443	1-216-825-11	METAL CHIP	2.2K	5%	1/16W
R255	1-216-025-00	RES, CHIP	100	5%	1/10W	R444	1-216-841-11	METAL CHIP	47K	5%	1/16W
R256	1-216-025-00	RES, CHIP	100	5%	1/10W	R451	1-216-833-11	RES, CHIP	10K	5%	1/16W
R257	1-216-833-11	RES, CHIP	10K	5%	1/16W	R452	1-216-833-11	RES, CHIP	10K	5%	1/16W
R258	1-216-833-11	RES, CHIP	10K	5%	1/16W	R453	1-216-845-11	METAL CHIP	100K	5%	1/16W
R259	1-208-462-41	RES, CHIP	10K	2%	1/10W	R454	1-216-839-11	METAL CHIP	33K	5%	1/16W
R260	1-208-462-41	RES, CHIP	10K	2%	1/10W	R461	1-216-073-00	METAL CHIP	10K	5%	1/10W
R261	1-216-057-00	METAL CHIP	2.2K	5%	1/10W	R462	1-216-073-00	METAL CHIP	10K	5%	1/10W
R262	1-216-049-11	RES, CHIP	1K	5%	1/10W	R463	1-216-073-00	METAL CHIP	10K	5%	1/10W
R263	1-216-049-11	RES, CHIP	1K	5%	1/10W	R464	1-216-073-00	METAL CHIP	10K	5%	1/10W
R264	1-216-829-11	METAL CHIP	4.7K	5%	1/16W	R466	1-216-833-11	RES, CHIP	10K	5%	1/16W
R265	1-216-041-00	METAL CHIP	470	5%	1/10W	R471	1-216-073-00	METAL CHIP	10K	5%	1/10W
R271	1-216-001-00	METAL CHIP	10	5%	1/10W	R472	1-216-833-11	RES, CHIP	10K	5%	1/16W
R272	1-216-073-00	METAL CHIP	10K	5%	1/10W	R473	1-216-809-11	METAL CHIP	100	5%	1/16W
R273	1-216-025-00	RES, CHIP	100	5%	1/10W	R474	1-216-821-11	METAL CHIP	1K	5%	1/16W
R274	1-216-025-00	RES, CHIP	100	5%	1/10W	R475	1-216-837-11	METAL CHIP	22K	5%	1/16W
R275	1-216-841-11	METAL CHIP	47K	5%	1/16W	R476	1-216-821-11	METAL CHIP	1K	5%	1/16W
R276	1-216-841-11	METAL CHIP	47K	5%	1/16W	R477	1-216-049-11	RES, CHIP	1K	5%	1/10W
R277	1-216-845-11	METAL CHIP	100K	5%	1/16W	R478	1-216-845-11	METAL CHIP	100K	5%	1/16W
R278	1-216-845-11	METAL CHIP	100K	5%	1/16W	R479	1-216-833-11	RES, CHIP	10K	5%	1/16W
R279	1-216-025-00	RES, CHIP	100	5%	1/10W	R481	1-216-057-00	METAL CHIP	2.2K	5%	1/10W
R280	1-216-025-00	RES, CHIP	100	5%	1/10W	R482	1-216-057-00	METAL CHIP	2.2K	5%	1/10W
R281	1-208-462-41	RES, CHIP	10K	2%	1/10W	R483	1-216-057-00	METAL CHIP	2.2K	5%	1/10W
R282	1-208-462-41	RES, CHIP	10K	2%	1/10W	R484	1-216-057-00	METAL CHIP	2.2K	5%	1/10W
R283	1-216-057-00	METAL CHIP	2.2K	5%	1/10W	R485	1-216-837-11	METAL CHIP	22K	5%	1/16W
R285	1-216-841-11	METAL CHIP	47K	5%	1/16W	R486	1-216-837-11	METAL CHIP	22K	5%	1/16W
R291	1-218-732-11	METAL CHIP	47K	0.5%	1/16W	R487	1-216-837-11	METAL CHIP	22K	5%	1/16W
R292	1-218-732-11	METAL CHIP	47K	0.5%	1/16W	R488	1-216-837-11	METAL CHIP	22K	5%	1/16W
R293	1-216-627-11	METAL CHIP	100	0.5%	1/10W	R501	1-216-097-00	RES, CHIP	100K	5%	1/10W
R294	1-216-627-11	METAL CHIP	100	0.5%	1/10W	R502	1-216-821-11	METAL CHIP	1K	5%	1/16W
R331	1-216-825-11	METAL CHIP	2.2K	5%	1/16W	R503	1-216-864-11	METAL CHIP	0	5%	1/16W
R333	1-216-129-00	METAL CHIP	2.2M	5%	1/10W	R505	1-216-097-00	RES, CHIP	100K	5%	1/10W
R334	1-216-821-11	METAL CHIP	1K	5%	1/16W	R506	1-216-813-11	METAL CHIP	220	5%	1/16W
R335	1-216-821-11	METAL CHIP	1K	5%	1/16W	R509	1-216-033-00	METAL CHIP	220	5%	1/10W
R337	1-216-821-11	METAL CHIP	1K	5%	1/16W	R510	1-216-097-00	RES, CHIP	100K	5%	1/10W
R341	1-216-825-11	METAL CHIP	2.2K	5%	1/16W	R512	1-216-845-11	METAL CHIP	100K	5%	1/16W
R342	1-216-089-00	RES, CHIP	47K	5%	1/10W	R513	1-216-295-00	SHORT	0		
R352	1-216-295-00	SHORT	0			R514	1-216-033-00	METAL CHIP	220	5%	1/10W
R353	1-216-295-00	SHORT	0			R515	1-216-033-00	METAL CHIP	220	5%	1/10W
R354	1-216-295-00	SHORT	0			R516	1-216-813-11	METAL CHIP	220	5%	1/16W
R401	1-216-033-00	METAL CHIP	220	5%	1/10W	R517	1-216-813-11	METAL CHIP	220	5%	1/16W
						R519	1-216-057-00	METAL CHIP	2.2K	5%	1/10W

Ref. No.	Part No.	Description	Remark	Ref. No.	Part No.	Description	Remark
R520	1-216-097-00	RES, CHIP	100K 5% 1/10W	R632	1-216-833-11	RES, CHIP	10K 5% 1/16W
R521	1-216-845-11	METAL CHIP	100K 5% 1/16W	R633	1-216-841-11	METAL CHIP	47K 5% 1/16W
R522	1-216-097-00	RES, CHIP	100K 5% 1/10W	R634	1-218-711-11	METAL CHIP	6.2K 0.5% 1/16W
R524	1-216-295-00	SHORT	0	R635	1-216-833-11	RES, CHIP	10K 5% 1/16W
R525	1-216-057-00	METAL CHIP	2.2K 5% 1/10W	R636	1-216-841-11	METAL CHIP	47K 5% 1/16W
R526	1-216-097-00	RES, CHIP	100K 5% 1/10W	R637	1-216-675-11	METAL CHIP	10K 0.5% 1/10W
R528	1-216-295-00	SHORT	0	R638	1-216-667-11	METAL CHIP	4.7K 0.5% 1/10W
R529	1-216-813-11	METAL CHIP	220 5% 1/16W	R639	1-216-675-11	METAL CHIP	10K 0.5% 1/10W
R530	1-216-033-00	METAL CHIP	220 5% 1/10W	R640	1-216-667-11	METAL CHIP	4.7K 0.5% 1/10W
R531	1-216-813-11	METAL CHIP	220 5% 1/16W	R642	1-202-926-11	RES, CHIP	36K 5% 1/16W
R548	1-216-839-11	METAL CHIP	33K 5% 1/16W	R643	1-218-293-11	RES, CHIP	24K 5% 1/16W
R548	1-216-841-11	METAL CHIP	47K 5% 1/16W	R644	1-218-293-11	RES, CHIP	24K 5% 1/16W
R551	1-216-841-11	METAL CHIP	47K 5% 1/16W	R645	1-202-926-11	RES, CHIP	36K 5% 1/16W
R551	1-216-845-11	METAL CHIP	100K 5% 1/16W	R646	1-216-833-11	RES, CHIP	10K 5% 1/16W
R551	1-216-845-11	METAL CHIP	100K 5% 1/16W	R647	1-216-833-11	RES, CHIP	10K 5% 1/16W
R585	1-216-839-11	METAL CHIP	33K 5% 1/16W	R648	1-216-033-00	METAL CHIP	220 5% 1/10W
R585	1-216-841-11	METAL CHIP	47K 5% 1/16W	R649	1-216-049-11	RES, CHIP	1K 5% 1/10W
R585	1-216-845-11	METAL CHIP	100K 5% 1/16W	R650	1-216-049-11	RES, CHIP	1K 5% 1/10W
R587	1-216-097-00	RES, CHIP	100K 5% 1/10W	R651	1-216-033-00	METAL CHIP	220 5% 1/10W
R591	1-216-839-11	METAL CHIP	33K 5% 1/16W	R652	1-216-081-00	METAL CHIP	22K 5% 1/10W
R591	1-216-841-11	METAL CHIP	47K 5% 1/16W	R653	1-216-081-00	METAL CHIP	22K 5% 1/10W
R591	1-216-845-11	METAL CHIP	100K 5% 1/16W	R657	1-216-073-00	METAL CHIP	10K 5% 1/10W
R595	1-216-049-11	RES, CHIP	1K 5% 1/10W	R658	1-216-073-00	METAL CHIP	10K 5% 1/10W
R601	1-218-711-11	METAL CHIP	6.2K 0.5% 1/16W	R661	1-216-073-00	METAL CHIP	10K 5% 1/10W
R602	1-216-833-11	RES, CHIP	10K 5% 1/16W	R662	1-216-073-00	METAL CHIP	10K 5% 1/10W
R603	1-216-841-11	METAL CHIP	47K 5% 1/16W	R663	1-216-089-00	RES, CHIP	47K 5% 1/10W
R604	1-218-711-11	METAL CHIP	6.2K 0.5% 1/16W	R667	1-218-720-11	METAL CHIP	15K 0.5% 1/16W
R605	1-216-833-11	RES, CHIP	10K 5% 1/16W	R668	1-218-730-11	METAL CHIP	39K 0.5% 1/16W
R606	1-216-841-11	METAL CHIP	47K 5% 1/16W	R669	1-218-720-11	METAL CHIP	15K 0.5% 1/16W
R607	1-216-675-11	METAL CHIP	10K 0.5% 1/10W	R670	1-218-730-11	METAL CHIP	39K 0.5% 1/16W
R608	1-216-667-11	METAL CHIP	4.7K 0.5% 1/10W	R678	1-216-033-00	METAL CHIP	220 5% 1/10W
R609	1-216-675-11	METAL CHIP	10K 0.5% 1/10W	R679	1-216-049-11	RES, CHIP	1K 5% 1/10W
R610	1-216-667-11	METAL CHIP	4.7K 0.5% 1/10W	R680	1-216-049-11	RES, CHIP	1K 5% 1/10W
R612	1-202-926-11	RES, CHIP	36K 5% 1/16W	R681	1-216-033-00	METAL CHIP	220 5% 1/10W
R613	1-218-293-11	RES, CHIP	24K 5% 1/16W	R682	1-216-081-00	METAL CHIP	22K 5% 1/10W
R614	1-218-293-11	RES, CHIP	24K 5% 1/16W	R683	1-216-081-00	METAL CHIP	22K 5% 1/10W
R615	1-202-926-11	RES, CHIP	36K 5% 1/16W	R691	1-216-833-11	RES, CHIP	10K 5% 1/16W
R616	1-216-833-11	RES, CHIP	10K 5% 1/16W	R692	1-216-833-11	RES, CHIP	10K 5% 1/16W
R617	1-216-833-11	RES, CHIP	10K 5% 1/16W	R693	1-216-841-11	METAL CHIP	47K 5% 1/16W
R618	1-216-033-00	METAL CHIP	220 5% 1/10W	R695	1-216-845-11	METAL CHIP	100K 5% 1/16W
R619	1-216-049-11	RES, CHIP	1K 5% 1/10W	R696	1-216-097-00	RES, CHIP	100K 5% 1/10W
R620	1-216-049-11	RES, CHIP	1K 5% 1/10W	R701	1-216-845-11	METAL CHIP	100K 5% 1/16W
R621	1-216-033-00	METAL CHIP	220 5% 1/10W	R702	1-216-845-11	METAL CHIP	100K 5% 1/16W
R622	1-216-081-00	METAL CHIP	22K 5% 1/10W	R703	1-216-845-11	METAL CHIP	100K 5% 1/16W
R623	1-216-081-00	METAL CHIP	22K 5% 1/10W	R704	1-216-033-00	METAL CHIP	220 5% 1/10W
R627	1-216-833-11	RES, CHIP	10K 5% 1/16W	R705	1-216-033-00	METAL CHIP	220 5% 1/10W
R628	1-216-833-11	RES, CHIP	10K 5% 1/16W	R706	1-216-033-00	METAL CHIP	220 5% 1/10W
R629	1-216-833-11	RES, CHIP	10K 5% 1/16W	R707	1-216-025-00	RES, CHIP	100 5% 1/10W
R630	1-216-833-11	RES, CHIP	10K 5% 1/16W	R709	1-216-041-00	METAL CHIP	470 5% 1/10W
R631	1-218-711-11	METAL CHIP	6.2K 0.5% 1/16W	R710	1-216-033-00	METAL CHIP	220 5% 1/10W
				R711	1-216-097-00	RES, CHIP	100K 5% 1/10W
				R714	1-216-864-11	METAL CHIP	0 5% 1/16W
				R715	1-216-845-11	METAL CHIP	100K 5% 1/16W
				R717	1-216-845-11	METAL CHIP	100K 5% 1/16W
				R718	1-216-845-11	METAL CHIP	100K 5% 1/16W
				R720	1-216-097-00	RES, CHIP	100K 5% 1/10W
				R721	1-216-057-00	METAL CHIP	2.2K 5% 1/10W

MAIN

Ref. No.	Part No.	Description	Remark	Ref. No.	Part No.	Description	Remark
R751	1-216-813-11	METAL CHIP	220 5% 1/16W	R954	1-216-105-00	RES, CHIP	220K 5% 1/10W
R752	1-216-813-11	METAL CHIP	220 5% 1/16W	R955	1-216-089-00	RES, CHIP	47K 5% 1/10W
R753	1-216-081-00	METAL CHIP	22K 5% 1/10W	R956	1-216-097-00	RES, CHIP	100K 5% 1/10W
R754	1-216-081-00	METAL CHIP	22K 5% 1/10W	R957	1-216-073-00	METAL CHIP	10K 5% 1/10W
R756	1-216-071-00	METAL CHIP	8.2K 5% 1/10W	R958	1-216-025-00	RES, CHIP	100 5% 1/10W
R757	1-216-081-00	METAL CHIP	22K 5% 1/10W	R959	1-216-025-00	RES, CHIP	100 5% 1/10W
R758	1-216-049-11	RES, CHIP	1K 5% 1/10W	R960	1-216-295-00	SHORT	0
R759	1-216-065-00	RES, CHIP	4.7K 5% 1/10W	R961	1-216-025-00	RES, CHIP	100 5% 1/10W
R760	1-216-841-11	METAL CHIP	47K 5% 1/16W	R962	1-216-049-11	RES, CHIP	1K 5% 1/10W
R761	1-216-841-11	METAL CHIP	47K 5% 1/16W	R963	1-216-845-11	METAL CHIP	100K 5% 1/16W
R762	1-216-841-11	METAL CHIP	47K 5% 1/16W	R964	1-216-845-11	METAL CHIP	100K 5% 1/16W
R763	1-216-829-11	METAL CHIP	4.7K 5% 1/16W	R965	1-216-025-00	RES, CHIP	100 5% 1/10W
R764	1-216-829-11	METAL CHIP	4.7K 5% 1/16W	R966	1-216-025-00	RES, CHIP	100 5% 1/10W
R771	1-218-732-11	METAL CHIP	47K 0.5% 1/16W	R967	1-216-025-00	RES, CHIP	100 5% 1/10W
R772	1-218-732-11	METAL CHIP	47K 0.5% 1/16W	R968	1-216-025-00	RES, CHIP	100 5% 1/10W
R773	1-218-700-11	METAL CHIP	2.2K 0.5% 1/16W	R969	1-216-025-00	RES, CHIP	100 5% 1/10W
R773	1-218-712-11	METAL CHIP	6.8K 0.5% 1/16W	R970	1-216-809-11	METAL CHIP	100 5% 1/16W
R774	1-218-712-11	METAL CHIP	6.8K 0.5% 1/16W	R971	1-216-809-11	METAL CHIP	100 5% 1/16W
R774	1-218-728-11	METAL CHIP	33K 0.5% 1/16W	R972	1-216-025-00	RES, CHIP	100 5% 1/10W
R775	1-218-704-11	METAL CHIP	3.3K 0.5% 1/16W	R973	1-216-025-00	RES, CHIP	100 5% 1/10W
R776	1-218-706-11	METAL CHIP	3.9K 0.5% 1/16W	R974	1-216-097-00	RES, CHIP	100K 5% 1/10W
R777	1-218-724-11	METAL CHIP	22K 0.5% 1/16W	R975	1-216-097-00	RES, CHIP	100K 5% 1/10W
R778	1-218-712-11	METAL CHIP	6.8K 0.5% 1/16W	R976	1-216-097-00	RES, CHIP	100K 5% 1/10W
R779	1-218-700-11	METAL CHIP	2.2K 0.5% 1/16W	R977	1-216-097-00	RES, CHIP	100K 5% 1/10W
R779	1-218-712-11	METAL CHIP	6.8K 0.5% 1/16W	< COMPOSITION CIRCUIT BLOCK >			
R780	1-218-712-11	METAL CHIP	6.8K 0.5% 1/16W	RB251	1-233-412-11	RES, CHIP NETWORK 1K (3216)	
R780	1-218-728-11	METAL CHIP	33K 0.5% 1/16W	RB252	1-233-412-11	RES, CHIP NETWORK 1K (3216)	
R781	1-218-732-11	METAL CHIP	47K 0.5% 1/16W	RB301	1-233-578-11	RES, CHIP NETWORK 47K	
R782	1-218-704-11	METAL CHIP	3.3K 0.5% 1/16W	RB502	1-233-412-11	RES, CHIP NETWORK 1K (3216)	
R783	1-218-706-11	METAL CHIP	3.9K 0.5% 1/16W	RB504	1-216-182-00	RES, CHIP NETWORK 220 (3216)	
R784	1-218-724-11	METAL CHIP	22K 0.5% 1/16W	RB505	1-233-412-11	RES, CHIP NETWORK 1K (3216)	
R785	1-218-712-11	METAL CHIP	6.8K 0.5% 1/16W	RB507	1-216-182-00	RES, CHIP NETWORK 220 (3216)	
R786	1-218-732-11	METAL CHIP	47K 0.5% 1/16W	RB508	1-216-182-00	RES, CHIP NETWORK 220 (3216)	
R787	1-216-665-11	METAL CHIP	3.9K 0.5% 1/10W	RB509	1-216-182-00	RES, CHIP NETWORK 220 (3216)	
R788	1-216-665-11	METAL CHIP	3.9K 0.5% 1/10W	< VARIABLE RESISTOR >			
R789	1-216-665-11	METAL CHIP	3.9K 0.5% 1/10W	RV131	1-238-718-11	RES, ADJ, METAL GLAZE 470K	
R791	1-208-795-11	RES, CHIP	3.6K 2% 1/10W	< SWITCH >			
R792	1-208-795-11	RES, CHIP	3.6K 2% 1/10W	S500	1-762-108-31	SWITCH, PUSH (1 KEY) (NOSE DETECT)	
R797	1-216-665-11	METAL CHIP	3.9K 0.5% 1/10W	< THERMISTOR >			
R798	1-216-665-11	METAL CHIP	3.9K 0.5% 1/10W	TH271	1-801-792-21	THERMISTOR, POSITIVE	
R799	1-216-665-11	METAL CHIP	3.9K 0.5% 1/10W	TH461	1-803-615-21	THERMISTOR, POSITIVE	
R901	1-216-113-00	METAL CHIP	470K 5% 1/10W	TH462	1-803-615-21	THERMISTOR, POSITIVE	
R902	1-216-821-11	METAL CHIP	1K 5% 1/16W	< TUNER >			
R903	1-216-077-00	RES, CHIP	15K 5% 1/10W	TU101	A-3282-045-A	TUNER UNIT (TUX-012 (E))	
R904	1-216-861-11	METAL CHIP	2.2M 5% 1/16W	< VIBRATOR >			
R905	1-216-817-11	METAL CHIP	470 5% 1/16W	X151	1-781-361-21	VIBRATOR, CRYSTAL (10.25MHz)	
R906	1-216-813-11	METAL CHIP	220 5% 1/16W	X300	1-767-408-21	VIBRATOR, CRYSTAL (16.9344MHz)	
R907	1-216-813-11	METAL CHIP	220 5% 1/16W	X500	1-781-660-11	VIBRATOR, CERAMIC (3.58MHz)	
R951	1-216-097-00	RES, CHIP	100K 5% 1/10W	X501	1-760-928-21	VIBRATOR, CRYSTAL (32.768kHz)	
R952	1-216-097-00	RES, CHIP	100K 5% 1/10W	X701	1-781-030-21	VIBRATOR, CRYSTAL (18.432MHz)	
R953	1-216-097-00	RES, CHIP	100K 5% 1/10W				

Ref. No.	Part No.	Description	Remark
X901	1-781-536-11	VIBRATOR, CRYSTAL (4.332MHz)	
X951	1-579-843-11	VIBRATOR, CRYSTAL (4.19MHz)	

*	A-3294-736-A	RELAY BOARD, COMPLETE	

	3-040-760-01	SHEET (CONNECTOR)	
< CAPACITOR >			
C701	1-164-004-11	CERAMIC CHIP	0.1uF 10% 25V
C702	1-164-004-11	CERAMIC CHIP	0.1uF 10% 25V
C705	1-163-009-11	CERAMIC CHIP	0.001uF 10% 50V
C706	1-163-009-11	CERAMIC CHIP	0.001uF 10% 50V
< CONNECTOR >			
CN701	1-793-290-11	SOCKET, CONNECTOR 18P	
CN702	1-779-169-11	SOCKET, CONNECTOR 18P	
< DIODE >			
D701	8-719-056-84	DIODE	HZU7.5B2TRF
D702	8-719-056-84	DIODE	HZU7.5B2TRF
D703	8-719-056-84	DIODE	HZU7.5B2TRF
D704	8-719-056-84	DIODE	HZU7.5B2TRF
D705	8-719-056-84	DIODE	HZU7.5B2TRF
D706	8-719-056-84	DIODE	HZU7.5B2TRF
D707	8-719-071-25	DIODE	HZU18B2TRF
< LED >			
LED705	8-719-051-01	LED	CL-170HR-CD-T (TIR)
LED706	8-719-064-72	LED	BG1101F-10-TR (MD DISC SLOT)
< SWITCH >			
LSW702	1-771-703-11	SWITCH, KEYBOARD (WITH LED) (▲)	
< RESISTOR >			
R701	1-216-033-00	METAL CHIP	220 5% 1/10W
R709	1-216-295-00	SHORT	0
< SWITCH >			
S703	1-572-921-11	SWITCH, KEY BOARD (RESET)	
