

# MDX-C8970

SONY®

US Model

## SERVICE MANUAL

### SUPPLEMENT-1

File this supplement with the service manual.

Subject: Main/Display/Relay Boards Modification

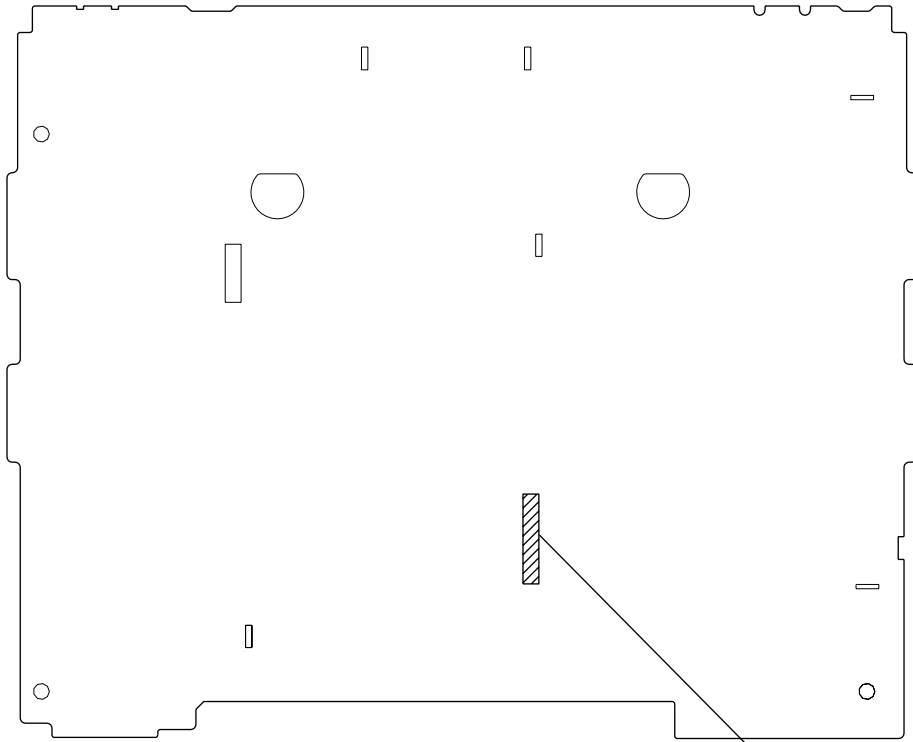
(ECN-CSB00896)

#### CONTENTS

<b>1. DISCRIMINATION</b> .....	2
<b>2. DIAGRAMS</b>	
2-1. Note for Printed Wiring Boards and Schematic Diagrams .....	3
2-2. Schematic Diagram – MAIN Board (1/5) – .....	5
2-3. Schematic Diagram – MAIN Board (2/5) – .....	6
2-4. Schematic Diagram – MAIN Board (3/5) – .....	7
2-5. Schematic Diagram – MAIN Board (4/5) – .....	8
2-6. Schematic Diagram – MAIN Board (5/5) – .....	9
2-7. Printed Wiring Board – MAIN Board (Component Side) – .....	10
2-8. Printed Wiring Board – MAIN Board (Conductor Side) – .....	11
2-9. Printed Wiring Board – DISPLAY Board – .....	12
2-10. Schematic Diagram – DISPLAY Board – .....	13
2-11. Printed Wiring Board – RELAY Board – .....	14
2-12. Schematic Diagram – RELAY Board – .....	15
<b>3. ELECTRICAL PARTS LIST</b> .....	16

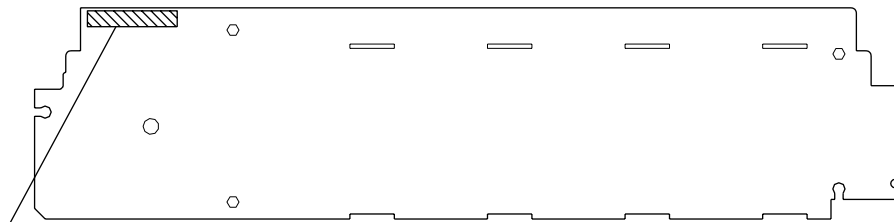
# 1. DISCRIMINATION

## - MAIN BOARD (Component Side) -



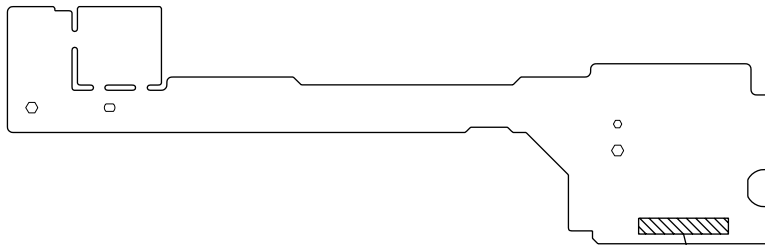
Former :1-674-589-11  
New :1-674-589-12

## - DISPLAY BOARD (Conductor Side) -



Former :1-674-590-11  
New :1-674-590-12

## - RELAY BOARD (Component Side) -



Former :1-674-591-11  
New :1-674-591-12

## 2. DIAGRAMS

### 2-1. NOTE FOR PRINTED WIRING BOARDS AND SCHEMATIC DIAGRAMS

(In addition to this, the necessary note is printed in each block)

#### Note on Printed Wiring Boards:

- — : parts extracted from the component side.
- : parts extracted from the conductor side.
- △ : internal component.
- ▒ : Pattern from the side which enables seeing.

(The other layers' patterns are not indicated)

#### Caution:

Pattern face side: Parts on the pattern face side seen from the pattern face are indicated.

Parts face side: Parts on the parts face side seen from the parts face are indicated.

#### Note on Schematic Diagram:

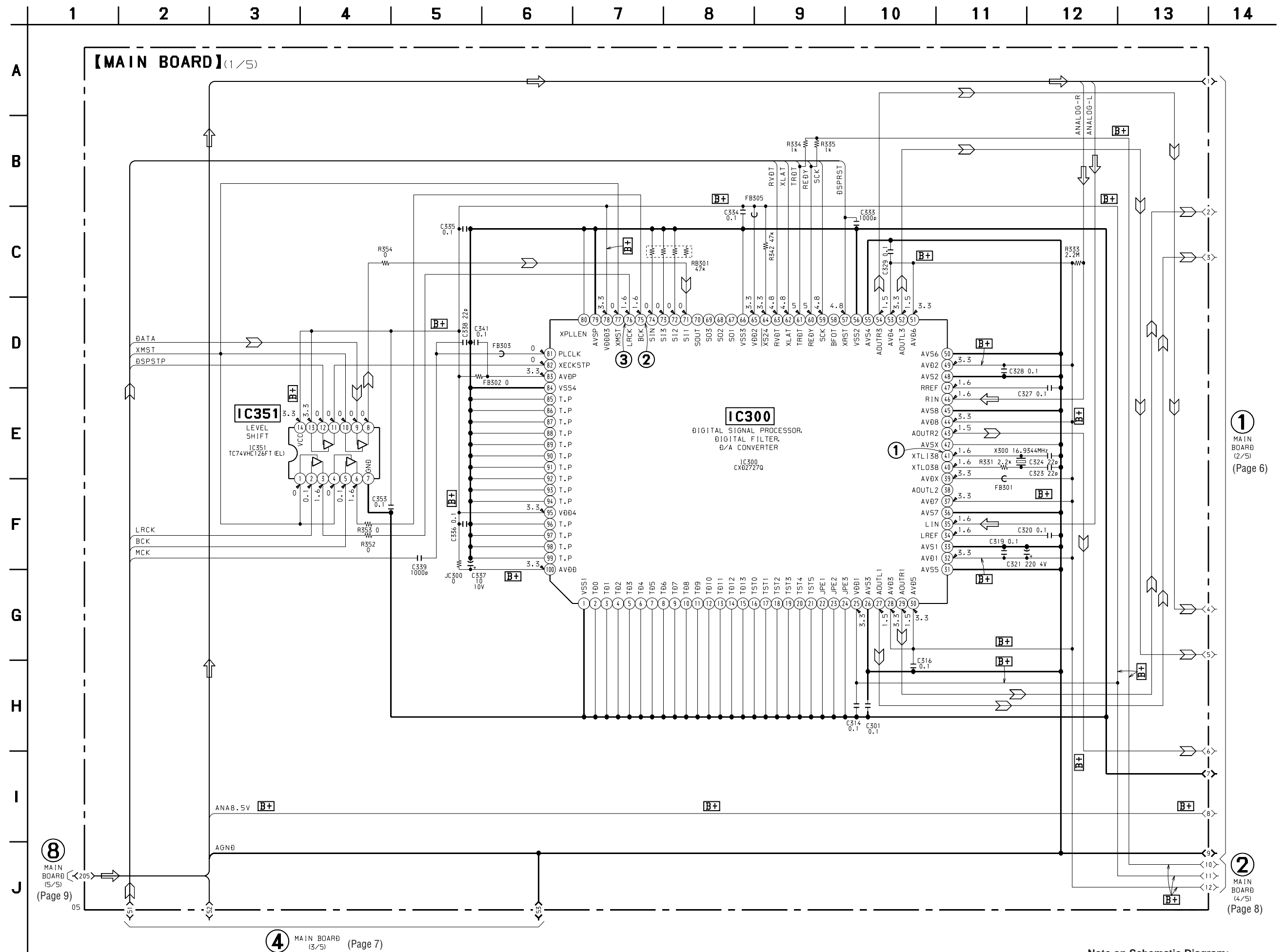
- All capacitors are in  $\mu\text{F}$  unless otherwise noted. pF:  $\mu\mu\text{F}$  50 WV or less are not indicated except for electrolytics and tantalums.
- All resistors are in  $\Omega$  and  $1/4\text{W}$  or less unless otherwise specified.
- △ : internal component.
- : panel designation.

**Note:** The components identified by mark △ or dotted line with mark △ are critical for safety.  
Replace only with part number specified.

- [B+]** : B+ Line.
- Power voltage is dc 14.4V and fed with regulated dc power supply from ACC and BATT cords.
- Voltages are taken with a VOM (Input impedance 10 M $\Omega$ ). Voltage variations may be noted due to normal production tolerances.
- Waveforms are taken with an oscilloscope. Voltage variations may be noted due to normal production tolerances.
- Circled numbers refer to waveforms.
- Signal path.
  - ⇒ : FM
  - ➡ : AM
  - ⊃ : MD

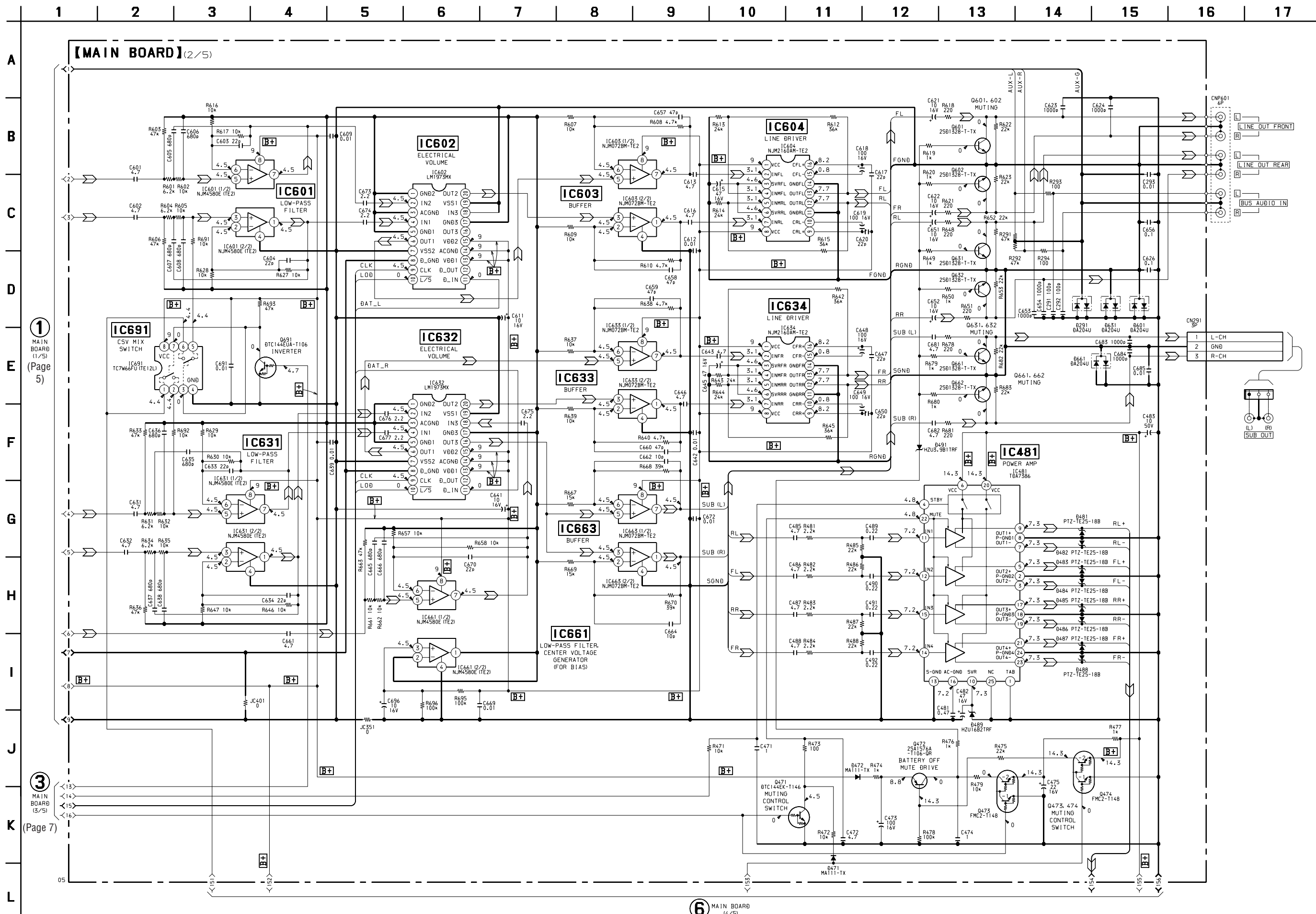


2-2. SCHEMATIC DIAGRAM – MAIN Board (1/5) –



**Note on Schematic Diagram:**  
 • Voltages and waveforms are dc with respect to ground under no-signal (detuned) conditions.  
 no mark : FM

2-3. SCHEMATIC DIAGRAM – MAIN Board (2/5) –



1 MAIN BOARD (1/5) (Page 5)

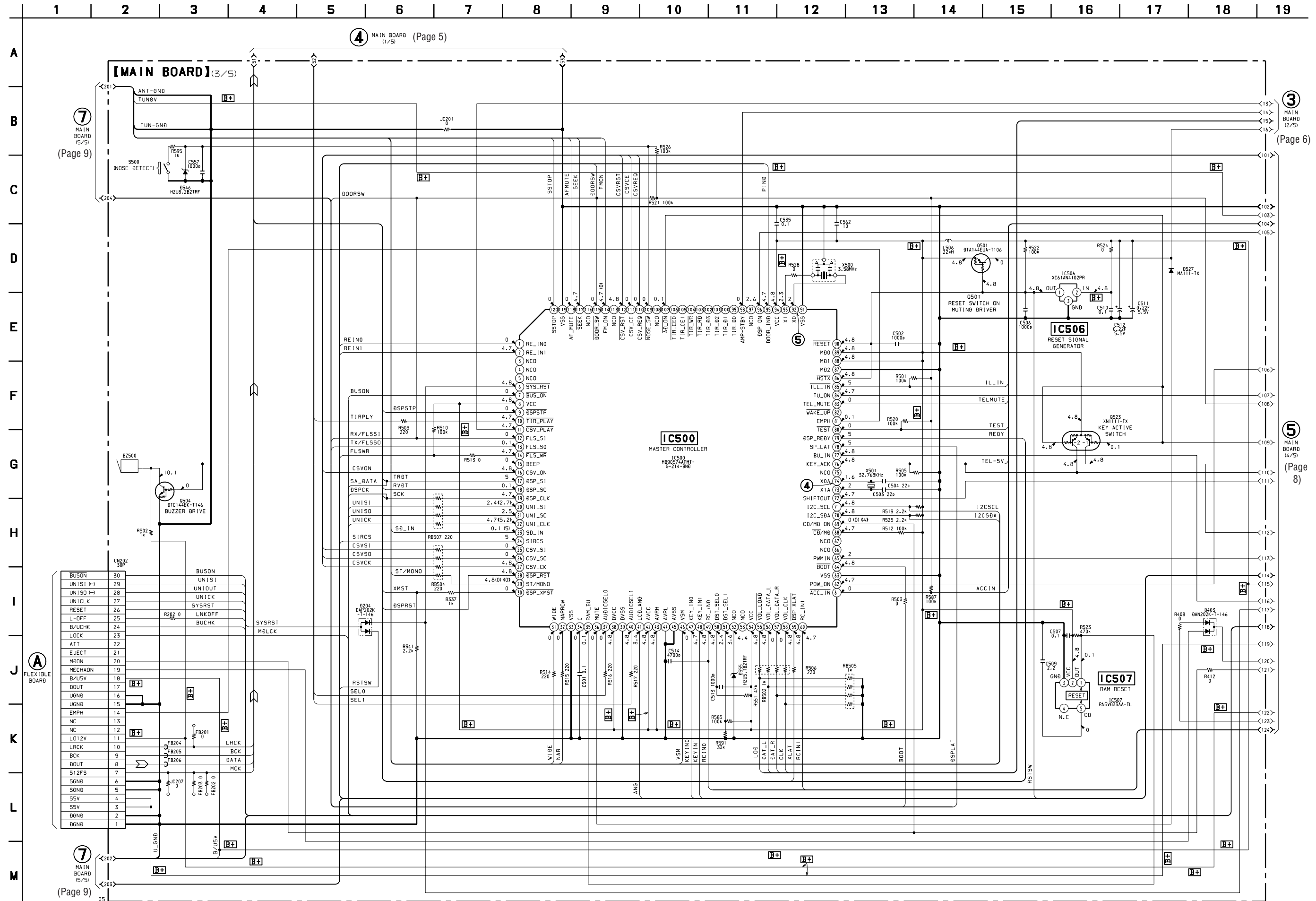
3 MAIN BOARD (3/5) (Page 7)

6 MAIN BOARD (4/5) (Page 8)

**Note on Schematic Diagram:**

- Voltages and waveforms are dc with respect to ground under no-signal (detuned) conditions.
- no mark : FM

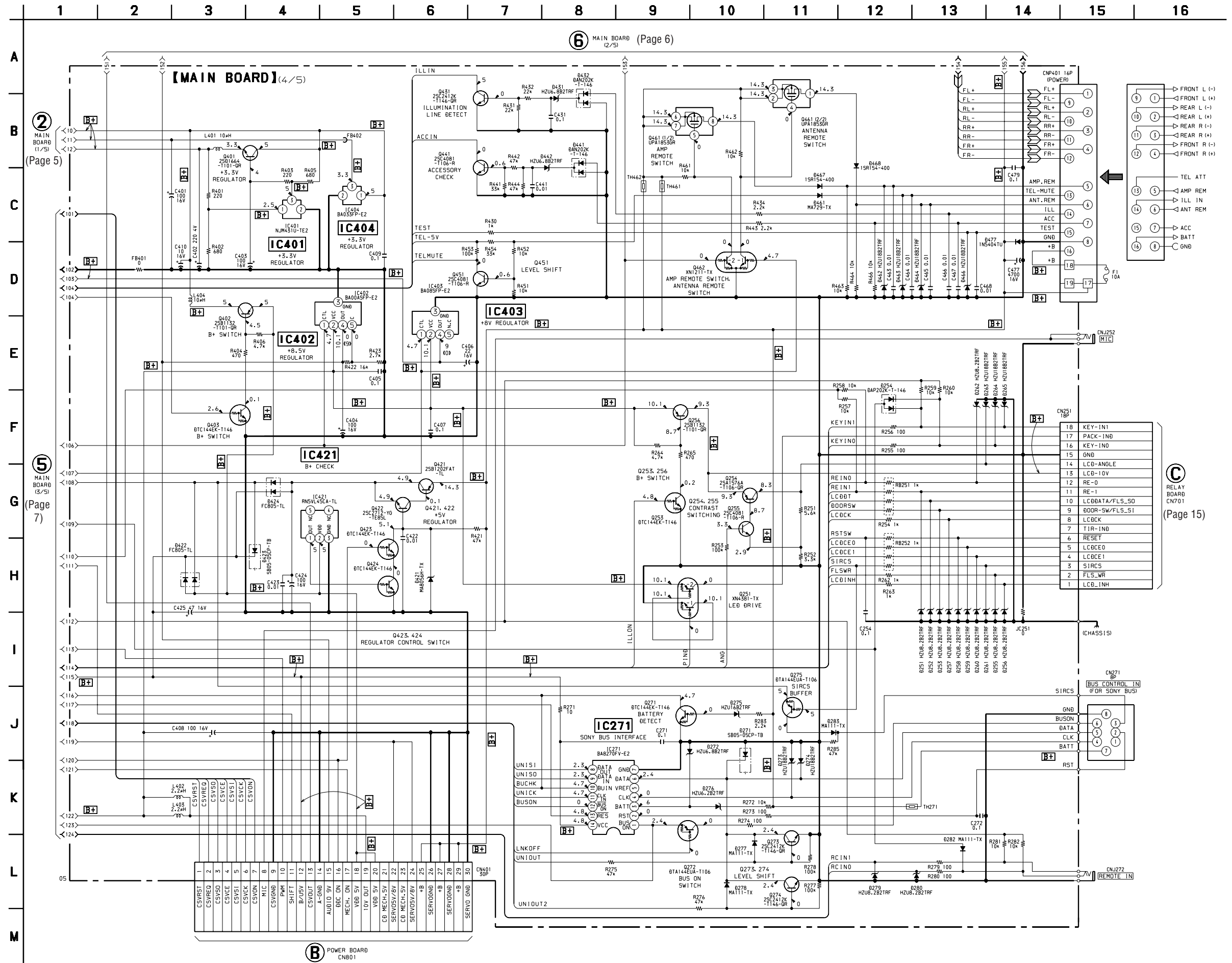
2-4. SCHEMATIC DIAGRAM – MAIN Board (3/5) –



**Note on Schematic Diagram:**

- Voltages and waveforms are dc with respect to ground under no-signal (detuned) conditions.
- no mark : FM
- ( ) : AM
- (( )) : MD PLAY

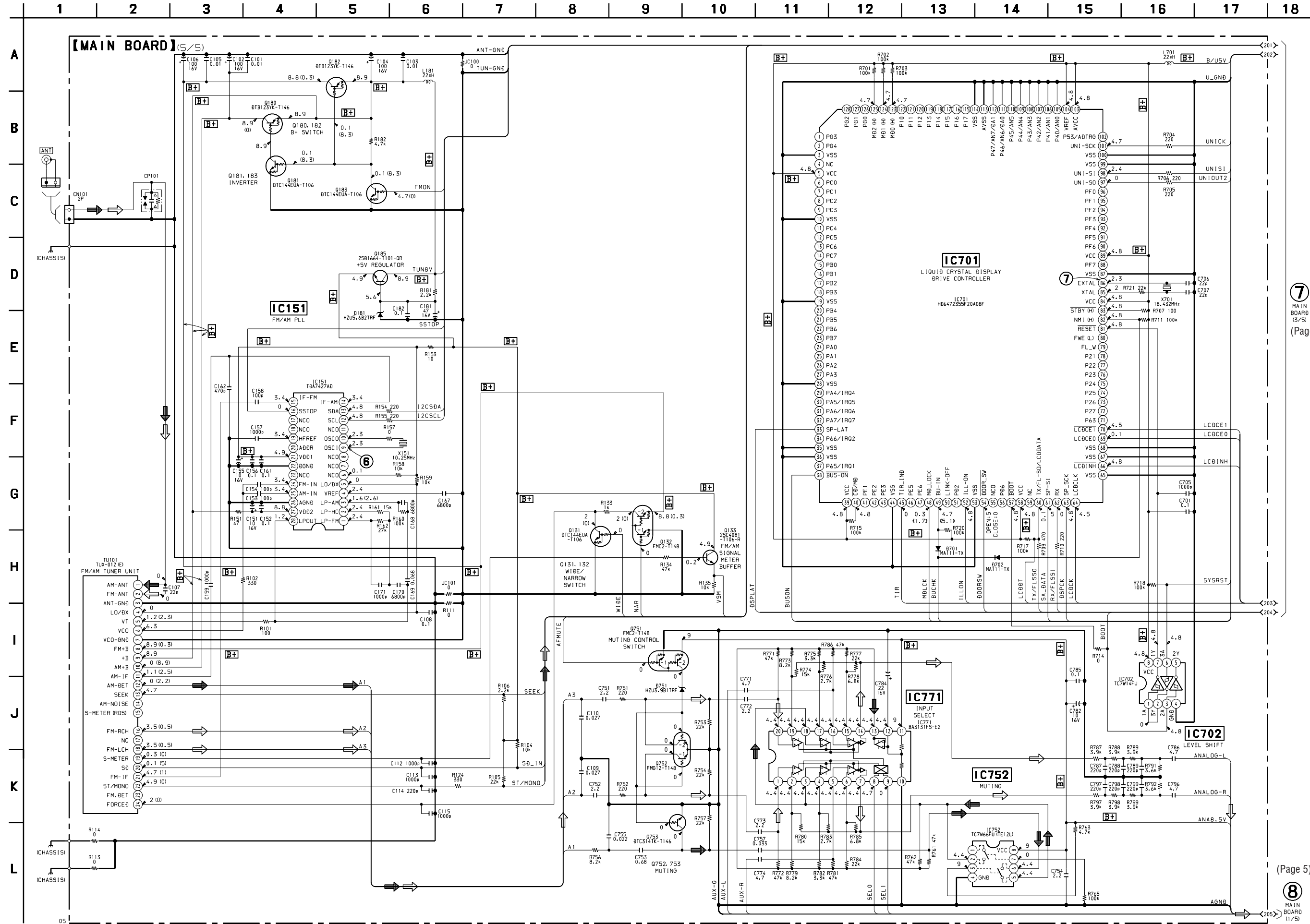
2-5. SCHEMATIC DIAGRAM – MAIN Board (4/5) –



**Note on Schematic Diagram:**  
 • Voltages and waveforms are dc with respect to ground under no-signal (detuned) conditions.  
 no mark : FM  
 << >> : MD PLAY



2-6. SCHEMATIC DIAGRAM - MAIN Board (5/5) -



7 MAIN BOARD (5/5) (Page 7)

8 MAIN BOARD (1/5) (Page 5)

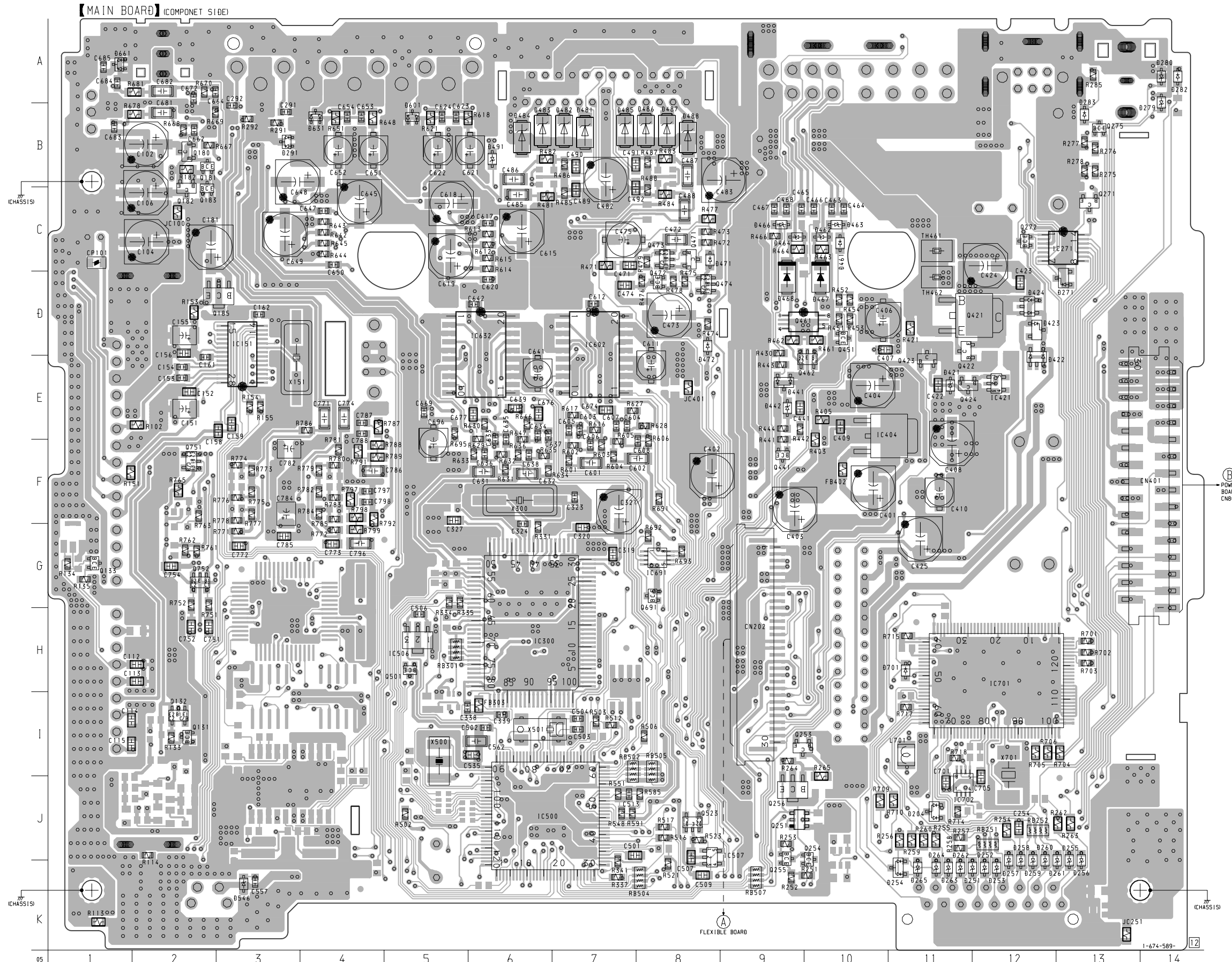
**Note on Schematic Diagram:**

- Voltages and waveforms are dc with respect to ground under no-signal (detuned) conditions.
- no mark : FM
- ( ) : AM
- << >> : MD PLAY

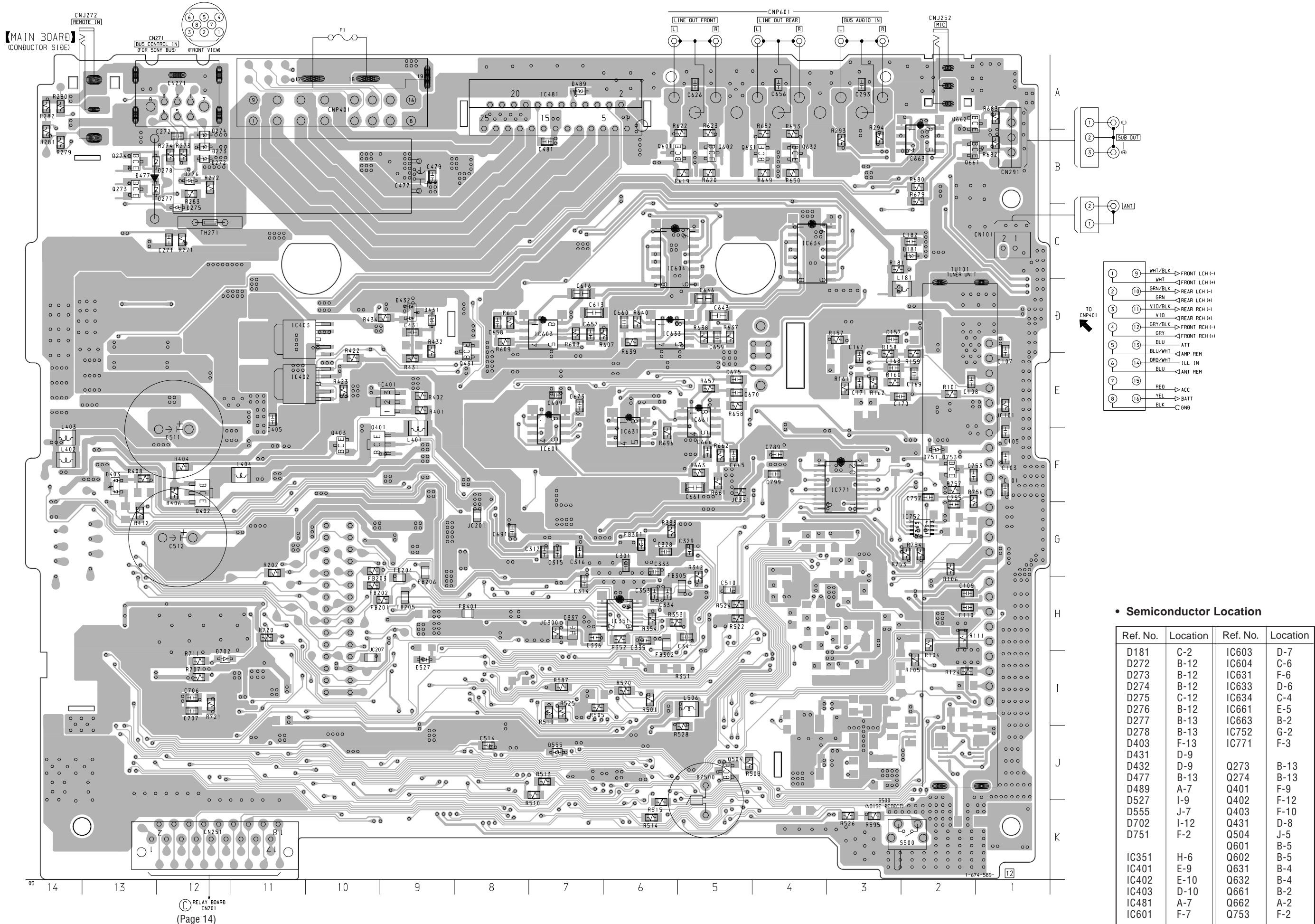
2-7. PRINTED WIRING BOARD – MAIN Board (Component Side) –

• Semiconductor Location

Ref. No.	Location	Ref. No.	Location
D204	J-11	D701	H-11
D251	K-12		
D252	K-12	IC151	E-3
D253	K-12	IC271	C-13
D254	K-11	IC300	H-6
D255	K-13	IC404	E-10
D256	K-13	IC421	E-12
D257	K-12	IC500	J-6
D258	K-12	IC506	H-5
D259	K-12	IC507	J-8
D260	K-12	IC602	D-7
D261	K-13	IC632	D-6
D262	K-11	IC691	G-8
D263	K-11	IC701	H-12
D264	K-11	IC702	J-11
D265	K-11		
D271	D-13	Q131	I-2
D279	B-14	Q132	I-2
D280	A-14	Q133	G-1
D282	A-14	Q180	B-2
D283	B-13	Q181	B-2
D291	B-3	Q182	C-2
D421	E-11	Q183	C-2
D422	E-12	Q185	D-3
D423	D-12	Q251	J-9
D424	D-12	Q253	I-9
D441	E-9	Q254	J-10
D442	E-9	Q255	J-9
D461	C-10	Q256	J-9
D462	C-10	Q271	C-13
D463	C-10	Q272	C-12
D464	C-9	Q275	B-13
D466	C-9	Q421	D-11
D467	D-10	Q422	D-11
D468	D-9	Q423	E-11
D471	C-8	Q424	E-11
D472	D-8	Q441	F-9
D481	B-7	Q451	D-10
D482	B-7	Q461	D-9
D483	B-6	Q462	E-10
D484	B-6	Q471	C-8
D485	B-7	Q472	D-8
D486	B-8	Q473	C-8
D487	B-8	Q474	D-8
D488	B-8	Q501	H-5
D491	B-6	Q523	J-8
D546	K-3	Q691	G-8
D601	B-5	Q751	F-2
D631	B-4	Q752	G-2
D661	A-1		



2-8. PRINTED WIRING BOARD – MAIN Board (Conductor Side) –



- TO CNP401
- ① WHT/BLK → FRONT LCH (-)
  - ② WHT → FRONT LCH (+)
  - ③ GRN/BLK → REAR LCH (-)
  - ④ GRN → REAR LCH (+)
  - ⑤ VID/BLK → REAR RCH (-)
  - ⑥ VID → REAR RCH (+)
  - ⑦ GRY/BLK → FRONT RCH (-)
  - ⑧ GRY → FRONT RCH (+)
  - ⑨ BLU → ATT
  - ⑩ BLU/WHI → AMP REM
  - ⑪ CRG/WHI → ILL IN
  - ⑫ BLU → ANT REM
  - ⑬ RED → ACC
  - ⑭ YEL → BATT
  - ⑮ BLK → GND

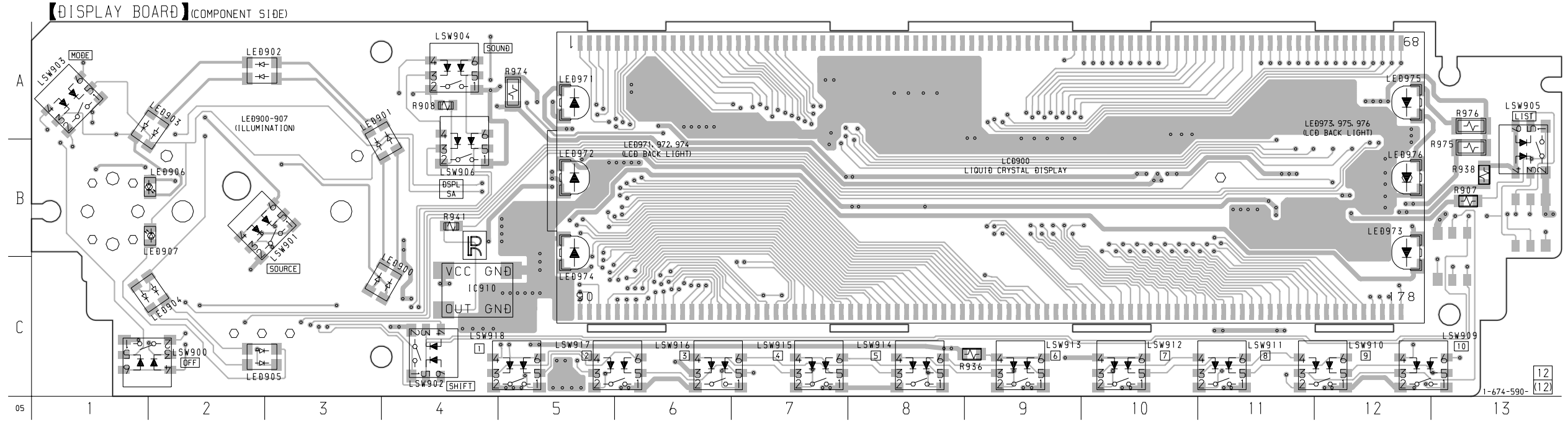
• Semiconductor Location

Ref. No.	Location	Ref. No.	Location
D181	C-2	IC603	D-7
D272	B-12	IC604	C-6
D273	B-12	IC631	F-6
D274	B-12	IC633	D-6
D275	C-12	IC634	C-4
D276	B-12	IC661	E-5
D277	B-13	IC663	B-2
D278	B-13	IC752	G-2
D403	F-13	IC771	F-3
D431	D-9		
D432	D-9	Q273	B-13
D477	B-13	Q274	B-13
D489	A-7	Q401	F-9
D527	I-9	Q402	F-12
D555	J-7	Q403	F-10
D702	I-12	Q431	D-8
D751	F-2	Q504	J-5
		Q601	B-5
		Q602	B-5
IC351	H-6	Q631	B-4
IC401	E-9	Q632	B-4
IC402	E-10	Q661	B-2
IC403	D-10	Q662	A-2
IC481	A-7	Q753	F-2
IC601	F-7		

2-9. PRINTED WIRING BOARD – DISPLAY Board –

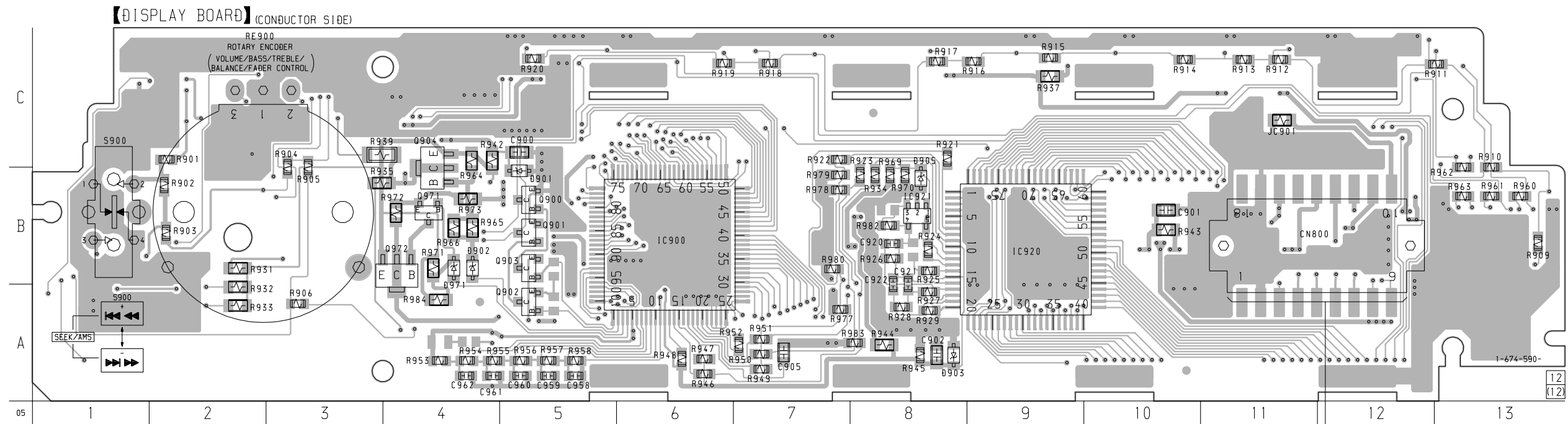
• Semiconductor Location (Component Side)

Ref. No.	Location
IC910	C-4
LED900	C-4
LED901	B-4
LED902	A-3
LED903	A-2
LED904	C-2
LED905	C-2
LED906	B-2
LED907	B-2
LED971	A-5
LED972	B-5
LED973	C-12
LED974	C-5
LED975	A-12
LED976	B-12



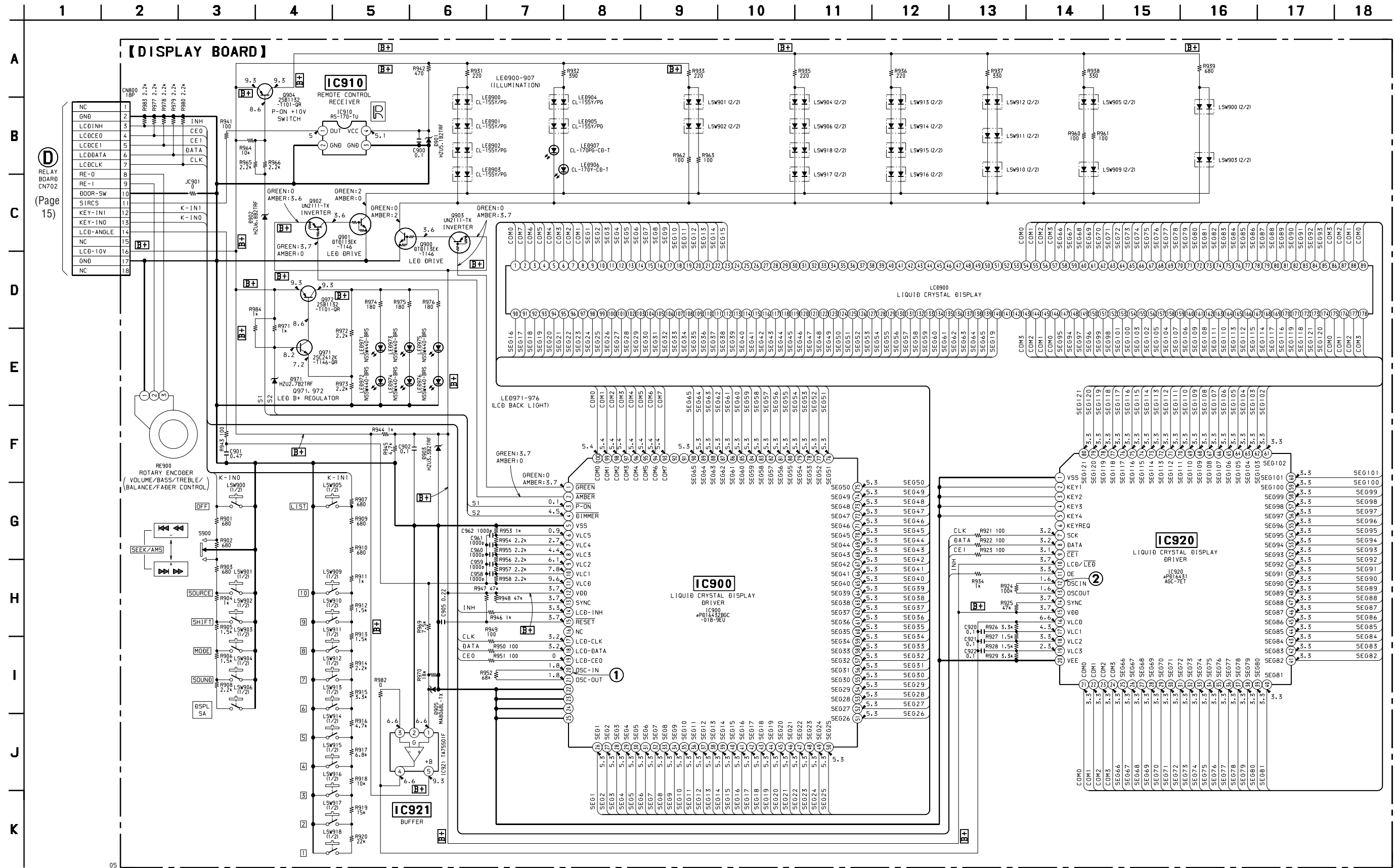
• Semiconductor Location (Conductor Side)

Ref. No.	Location
D901	B-5
D902	B-4
D903	A-8
D905	B-8
D971	B-4
IC900	B-6
IC920	B-9
IC921	B-8
Q900	B-5
Q901	B-5
Q902	A-5
Q903	B-5
Q904	B-4
Q971	B-4
Q972	B-4



RELAY BOARD  
CN702  
(Page 14)

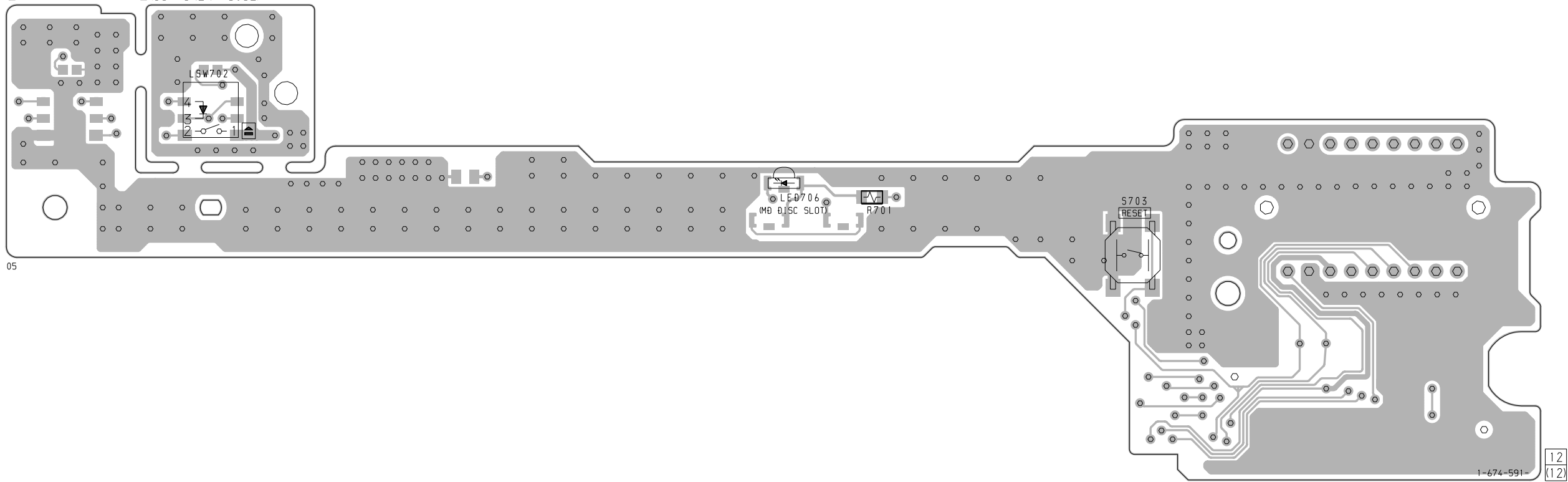
2-10. SCHEMATIC DIAGRAM - DISPLAY Board -



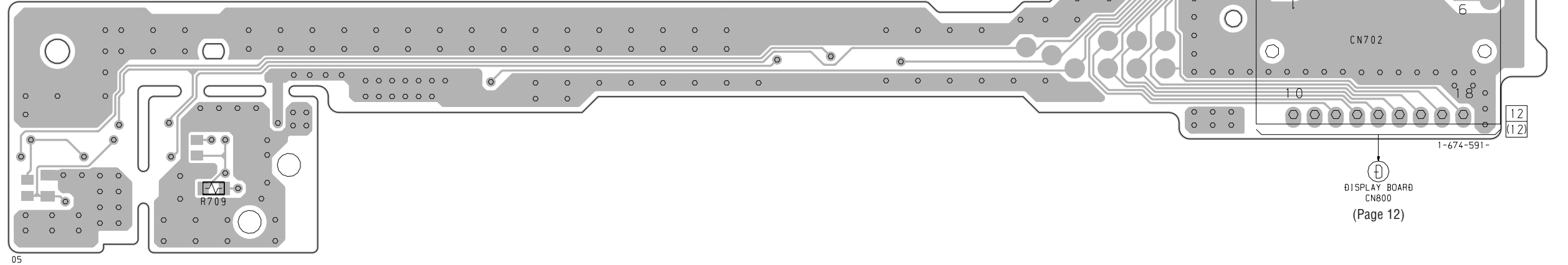
**Note on Schematic Diagram:**  
 • Voltages and waveforms are dc with respect to ground under no-signal (detuned) conditions.  
 no mark : FM

2-11. PRINTED WIRING BOARD – RELAY Board –

【RELAY BOARD】(COMPONENT SIDE)



【RELAY BOARD】(CONDUCTOR SIDE)

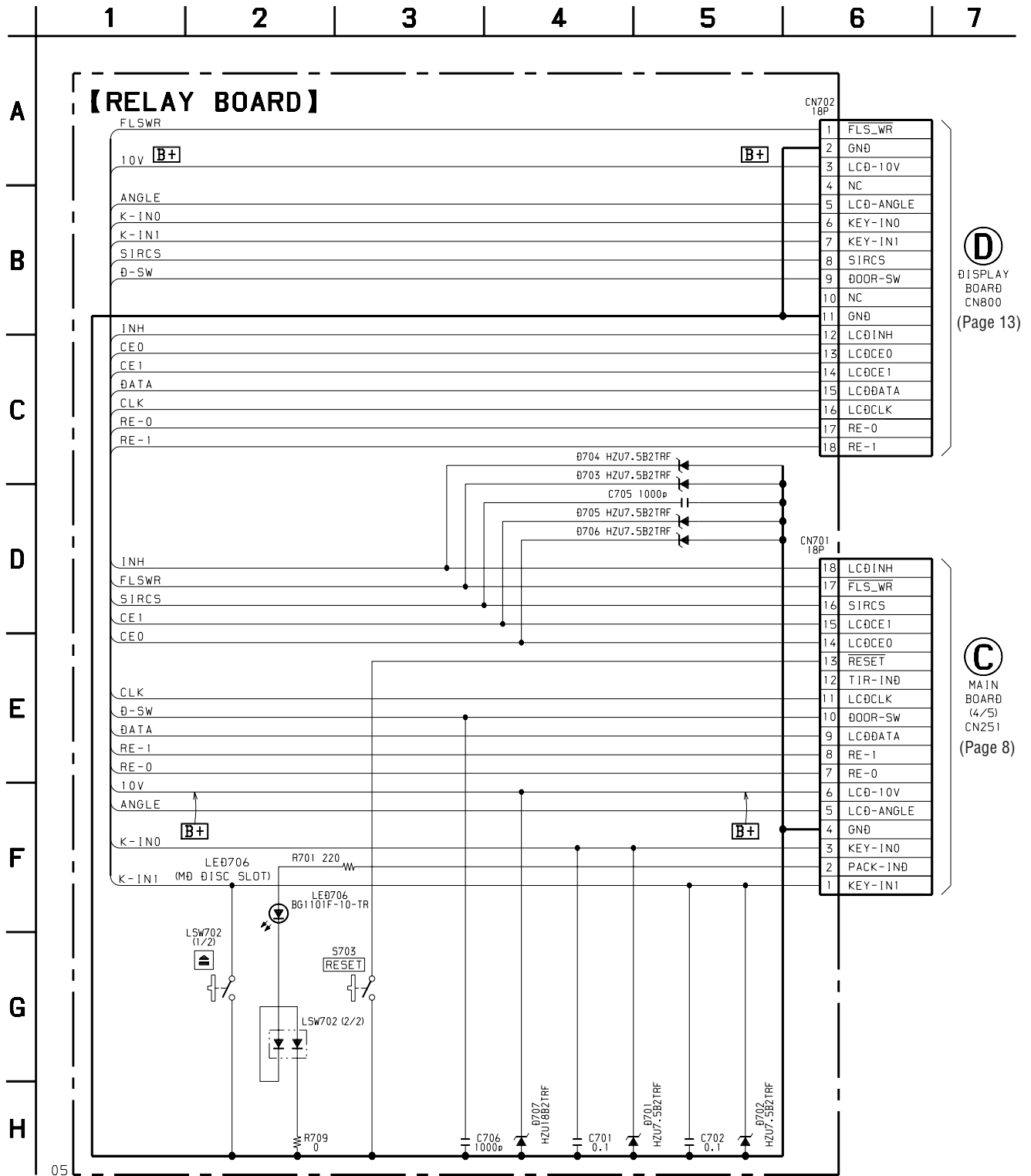


(Page 11)

MAIN BOARD  
CN251

DISPLAY BOARD  
CN800  
(Page 12)

2-12. SCHEMATIC DIAGRAM – RELAY Board –



**D**  
DISPLAY BOARD  
CN800  
(Page 13)

**C**  
MAIN BOARD  
(4/5)  
CN251  
(Page 8)

### 3. ELECTRICAL PARTS LIST

#### DISPLAY

**NOTE:**

- Due to standardization, replacements in the parts list may be different from the parts specified in the diagrams or the components used on the set.
- -XX and -X mean standardized parts, so they may have some difference from the original one.
- RESISTORS  
All resistors are in ohms.  
METAL: Metal-film resistor.  
METAL OXIDE: Metal oxide-film resistor.  
F: nonflammable


- Items marked “\*” are not stocked since they are seldom required for routine service. Some delay should be anticipated when ordering these items.
- SEMICONDUCTORS  
In each case, u:  $\mu$ , for example:  
uA. . :  $\mu$ A. .      uPA. . :  $\mu$ PA. .  
uPB. . :  $\mu$ PB. .    uPC. . :  $\mu$ PC. .  
uPD. . :  $\mu$ PD. .
- CAPACITORS  
uF:  $\mu$ F
- COILS  
uH:  $\mu$ H

When indicating parts by reference number, please include the board.

Ref. No.	Part No.	Description	Remark	Ref. No.	Part No.	Description	Remark
		DISPLAY BOARD *****				< LIQUID CRYSTAL DISPLAY >	
	1-694-414-11	CONDUCTOR BOARD, CONNENTION (RUBBER CONNECTOR)		LCD900	1-803-633-11	DISPLAY PANEL, LIQUID CRYSTAL	
						< LED >	
*	3-037-000-01	SHEET, DIFFUSION		LED900	8-719-987-45	LED CL-155Y/PG-CD-TL (ILLUMINATION)	
*	3-037-152-01	BRACKET (LCD)		LED901	8-719-987-45	LED CL-155Y/PG-CD-TL (ILLUMINATION)	
*	3-037-669-01	PLATE (LCD), LIGHT GUIDE		LED902	8-719-987-45	LED CL-155Y/PG-CD-TL (ILLUMINATION)	
		< CAPACITOR >		LED903	8-719-987-45	LED CL-155Y/PG-CD-TL (ILLUMINATION)	
C900	1-164-004-11	CERAMIC CHIP	0.1uF 10% 25V	LED904	8-719-987-45	LED CL-155Y/PG-CD-TL (ILLUMINATION)	
C901	1-107-823-11	CERAMIC CHIP	0.47uF 10% 16V	LED905	8-719-987-45	LED CL-155Y/PG-CD-TL (ILLUMINATION)	
C902	1-164-004-11	CERAMIC CHIP	0.1uF 10% 25V	LED906	8-719-033-13	LED CL-170Y-CD-T (ILLUMINATION)	
C905	1-164-489-11	CERAMIC CHIP	0.22uF 10% 16V	LED907	8-719-033-14	LED CL-170PG-CD-T (ILLUMINATION)	
C920	1-107-826-11	CERAMIC CHIP	0.1uF 10% 16V	LED971	8-719-076-58	LED NSSW440-BRS (LCD BACK LIGHT)	
C921	1-107-826-11	CERAMIC CHIP	0.1uF 10% 16V	LED972	8-719-076-58	LED NSSW440-BRS (LCD BACK LIGHT)	
C922	1-107-826-11	CERAMIC CHIP	0.1uF 10% 16V	LED973	8-719-076-58	LED NSSW440-BRS (LCD BACK LIGHT)	
C958	1-162-964-11	CERAMIC CHIP	0.001uF 10% 50V	LED974	8-719-076-58	LED NSSW440-BRS (LCD BACK LIGHT)	
C959	1-162-964-11	CERAMIC CHIP	0.001uF 10% 50V	LED975	8-719-076-58	LED NSSW440-BRS (LCD BACK LIGHT)	
C960	1-162-964-11	CERAMIC CHIP	0.001uF 10% 50V	LED976	8-719-076-58	LED NSSW440-BRS (LCD BACK LIGHT)	
C961	1-162-964-11	CERAMIC CHIP	0.001uF 10% 50V			< SWITCH >	
C962	1-162-964-11	CERAMIC CHIP	0.001uF 10% 50V	LSW900	1-762-620-21	SWITCH, KEY BOARD (WITH LED) (OFF)	
		< CONNECTOR >		LSW901	1-762-620-21	SWITCH, KEY BOARD (WITH LED) (SOURCE)	
CN800	1-778-183-11	PLUG, CONNECTOR 18P		LSW902	1-762-620-21	SWITCH, KEY BOARD (WITH LED) (SHIFT)	
		< DIODE >		LSW903	1-762-620-21	SWITCH, KEY BOARD (WITH LED) (MODE)	
D901	8-719-976-99	DIODE HZU5.1B2TRF		LSW904	1-762-620-21	SWITCH, KEY BOARD (WITH LED) (SOUND)	
D902	8-719-064-08	DIODE HZU6.8B2TRF		LSW905	1-762-620-21	SWITCH, KEY BOARD (WITH LED) (LIST)	
D903	8-719-071-62	DIODE HZU3.3B2TRF		LSW906	1-762-620-21	SWITCH, KEY BOARD (WITH LED) (DSPL, SA)	
D905	8-719-017-62	DIODE MA8068-L-TX		LSW909	1-762-620-21	SWITCH, KEY BOARD (WITH LED) (10)	
D971	8-719-056-73	DIODE UDZ-TE-17-2.7B		LSW910	1-762-620-21	SWITCH, KEY BOARD (WITH LED) (9)	
D971	8-719-071-59	DIODE HZU2.7B2TRF		LSW911	1-762-620-21	SWITCH, KEY BOARD (WITH LED) (8)	
		< IC >		LSW912	1-762-620-21	SWITCH, KEY BOARD (WITH LED) (7)	
IC900	8-759-496-75	IC uPD16432BGC-018-9EU		LSW913	1-762-620-21	SWITCH, KEY BOARD (WITH LED) (6)	
IC910	8-749-012-25	IC RS-170-TU		LSW914	1-762-620-21	SWITCH, KEY BOARD (WITH LED) (5)	
IC920	8-759-580-20	IC uPD16431AGC-7ET		LSW915	1-762-620-21	SWITCH, KEY BOARD (WITH LED) (4)	
IC921	8-759-075-66	IC TA75S01F (TE85L)		LSW916	1-762-620-21	SWITCH, KEY BOARD (WITH LED) (3)	
		< SHORT >		LSW917	1-762-620-21	SWITCH, KEY BOARD (WITH LED) (2)	
JC901	1-216-295-00	SHORT	0	LSW918	1-762-620-21	SWITCH, KEY BOARD (WITH LED) (1)	
						< TRANSISTOR >	
				Q900	8-729-904-66	TRANSISTOR DTD113EK-T-146	
				Q901	8-729-904-66	TRANSISTOR DTD113EK-T-146	
				Q902	8-729-424-08	TRANSISTOR UN2111-TX	
				Q903	8-729-424-08	TRANSISTOR UN2111-TX	



Ref. No.	Part No.	Description	Remark
Q904	8-729-106-60	TRANSISTOR	2SB1132-T101-QR
Q971	8-729-120-28	TRANSISTOR	2SC2412K-T-146-QR
Q972	8-729-106-60	TRANSISTOR	2SB1132-T101-QR
< RESISTOR >			
R901	1-219-286-11	RES, CHIP	680 2% 1/16W
R902	1-219-286-11	RES, CHIP	680 2% 1/16W
R903	1-219-286-11	RES, CHIP	680 2% 1/16W
R904	1-218-847-11	RES, CHIP	1K 2% 1/16W
R905	1-218-851-11	RES, CHIP	1.5K 2% 1/16W
R906	1-218-851-11	RES, CHIP	1.5K 2% 1/16W
R907	1-216-647-11	METAL CHIP	680 0.5% 1/10W
R908	1-218-855-11	RES, CHIP	2.2K 2% 1/16W
R909	1-219-286-11	RES, CHIP	680 2% 1/16W
R910	1-219-286-11	RES, CHIP	680 2% 1/16W
R911	1-218-847-11	RES, CHIP	1K 2% 1/16W
R912	1-218-851-11	RES, CHIP	1.5K 2% 1/16W
R913	1-218-851-11	RES, CHIP	1.5K 2% 1/16W
R914	1-218-855-11	RES, CHIP	2.2K 2% 1/16W
R915	1-218-859-11	RES, CHIP	3.3K 2% 1/16W
R916	1-218-863-11	RES, CHIP	4.7K 2% 1/16W
R917	1-218-867-11	RES, CHIP	6.8K 2% 1/16W
R918	1-218-871-11	RES, CHIP	10K 2% 1/16W
R919	1-218-875-11	RES, CHIP	15K 2% 1/16W
R920	1-218-879-11	RES, CHIP	22K 2% 1/16W
R921	1-216-809-11	METAL CHIP	100 5% 1/16W
R922	1-216-809-11	METAL CHIP	100 5% 1/16W
R923	1-216-809-11	METAL CHIP	100 5% 1/16W
R924	1-216-845-11	METAL CHIP	100K 5% 1/16W
R925	1-216-841-11	METAL CHIP	47K 5% 1/16W
R926	1-216-827-11	METAL CHIP	3.3K 5% 1/16W
R927	1-216-823-11	METAL CHIP	1.5K 5% 1/16W
R928	1-216-823-11	METAL CHIP	1.5K 5% 1/16W
R929	1-216-827-11	METAL CHIP	3.3K 5% 1/16W
R931	1-216-033-00	METAL CHIP	220 5% 1/10W
R932	1-216-039-00	METAL CHIP	390 5% 1/10W
R933	1-216-033-00	METAL CHIP	220 5% 1/10W
R934	1-216-821-11	METAL CHIP	1K 5% 1/16W
R935	1-216-033-00	METAL CHIP	220 5% 1/10W
R936	1-216-033-00	METAL CHIP	220 5% 1/10W
R937	1-216-037-00	METAL CHIP	330 5% 1/10W
R938	1-216-037-00	METAL CHIP	330 5% 1/10W
R939	1-216-194-00	METAL CHIP	680 5% 1/8W
R941	1-216-809-11	METAL CHIP	100 5% 1/16W
R942	1-216-041-00	METAL CHIP	470 5% 1/10W
R943	1-216-025-00	RES, CHIP	100 5% 1/10W
R944	1-216-049-11	RES, CHIP	1K 5% 1/10W
R945	1-216-829-11	METAL CHIP	4.7K 5% 1/16W
R946	1-216-821-11	METAL CHIP	1K 5% 1/16W
R947	1-216-841-11	METAL CHIP	47K 5% 1/16W
R948	1-216-841-11	METAL CHIP	47K 5% 1/16W
R949	1-216-809-11	METAL CHIP	100 5% 1/16W
R950	1-216-809-11	METAL CHIP	100 5% 1/16W
R951	1-216-809-11	METAL CHIP	100 5% 1/16W
R952	1-216-843-11	METAL CHIP	68K 5% 1/16W
R953	1-216-821-11	METAL CHIP	1K 5% 1/16W
R954	1-216-825-11	METAL CHIP	2.2K 5% 1/16W

Ref. No.	Part No.	Description	Remark
R955	1-216-825-11	METAL CHIP	2.2K 5% 1/16W
R956	1-216-825-11	METAL CHIP	2.2K 5% 1/16W
R957	1-216-825-11	METAL CHIP	2.2K 5% 1/16W
R958	1-216-825-11	METAL CHIP	2.2K 5% 1/16W
R960	1-216-809-11	METAL CHIP	100 5% 1/16W
R961	1-216-809-11	METAL CHIP	100 5% 1/16W
R962	1-216-809-11	METAL CHIP	100 5% 1/16W
R963	1-216-809-11	METAL CHIP	100 5% 1/16W
R964	1-216-073-00	METAL CHIP	10K 5% 1/10W
R965	1-216-057-00	METAL CHIP	2.2K 5% 1/10W
R966	1-216-057-00	METAL CHIP	2.2K 5% 1/10W
R969	1-218-713-11	METAL CHIP	7.5K 0.5% 1/16W
R970	1-218-722-11	METAL CHIP	18K 0.5% 1/16W
R971	1-216-049-11	RES, CHIP	1K 5% 1/10W
R972	1-216-057-00	METAL CHIP	2.2K 5% 1/10W
R973	1-216-057-00	METAL CHIP	2.2K 5% 1/10W
R974	1-216-180-00	RES, CHIP	180 5% 1/8W
R975	1-216-180-00	RES, CHIP	180 5% 1/8W
R976	1-216-180-00	RES, CHIP	180 5% 1/8W
R977	1-216-825-11	METAL CHIP	2.2K 5% 1/16W
R978	1-216-825-11	METAL CHIP	2.2K 5% 1/16W
R979	1-216-825-11	METAL CHIP	2.2K 5% 1/16W
R980	1-216-825-11	METAL CHIP	2.2K 5% 1/16W
R982	1-216-864-11	METAL CHIP	0 5% 1/16W
R983	1-216-825-11	METAL CHIP	2.2K 5% 1/16W
R984	1-216-049-11	RES, CHIP	1K 5% 1/10W
< ROTARY ENCODER >			
RE900	1-475-014-11	ENCODER, ROTARY (VOLUME/BASS/TREBLE/ BALANCE/FADER CONTROL)	
< SWITCH >			
S900	1-771-290-11	SWITCH, SLIDE (SEEK/AMS,  )	
*****			
*	A-3317-847-A	MAIN BOARD, COMPLETE	*****
*	3-022-317-01	BRACKET (AMP)	
*	3-023-841-11	HEAT SINK	
	7-685-794-09	SCREW +PTT 2.6X10 (S)	
< BUZZER >			
BZ500	1-504-920-11	BUZZER	
< CAPACITOR >			
C101	1-163-021-11	CERAMIC CHIP	0.01uF 10% 50V
C102	1-117-681-11	ELECT CHIP	100uF 20% 16V
C103	1-163-021-11	CERAMIC CHIP	0.01uF 10% 50V
C104	1-117-681-11	ELECT CHIP	100uF 20% 16V
C105	1-163-021-11	CERAMIC CHIP	0.01uF 10% 50V
C106	1-117-681-11	ELECT CHIP	100uF 20% 16V
C107	1-163-235-11	CERAMIC CHIP	22PF 5% 50V
C108	1-115-339-11	CERAMIC CHIP	0.1uF 10% 50V
C109	1-163-986-00	CERAMIC CHIP	0.027uF 10% 25V
C110	1-163-986-00	CERAMIC CHIP	0.027uF 10% 25V
C112	1-163-275-11	CERAMIC CHIP	0.001uF 5% 50V

**MAIN**

Ref. No.	Part No.	Description	Remark	Ref. No.	Part No.	Description	Remark
C113	1-163-275-11	CERAMIC CHIP	0.001uF 5% 50V	C423	1-163-021-11	CERAMIC CHIP	0.01uF 10% 50V
C114	1-163-125-00	CERAMIC CHIP	220PF 5% 50V	C424	1-117-681-11	ELECT CHIP	100uF 20% 16V
C115	1-163-275-11	CERAMIC CHIP	0.001uF 5% 50V	C425	1-126-204-11	ELECT CHIP	47uF 20% 16V
C151	1-104-913-11	TANTALUM CHIP	10uF 20% 16V	C431	1-115-339-11	CERAMIC CHIP	0.1uF 10% 50V
C152	1-115-339-11	CERAMIC CHIP	0.1uF 10% 50V	C441	1-163-021-11	CERAMIC CHIP	0.01uF 10% 50V
C153	1-162-927-11	CERAMIC CHIP	100PF 5% 50V	C463	1-162-970-11	CERAMIC CHIP	0.01uF 10% 25V
C154	1-162-927-11	CERAMIC CHIP	100PF 5% 50V	C464	1-162-970-11	CERAMIC CHIP	0.01uF 10% 25V
C155	1-104-913-11	TANTALUM CHIP	10uF 20% 16V	C465	1-162-970-11	CERAMIC CHIP	0.01uF 10% 25V
C156	1-115-339-11	CERAMIC CHIP	0.1uF 10% 50V	C466	1-162-970-11	CERAMIC CHIP	0.01uF 10% 25V
C157	1-163-009-11	CERAMIC CHIP	0.001uF 10% 50V	C467	1-162-970-11	CERAMIC CHIP	0.01uF 10% 25V
C158	1-163-251-11	CERAMIC CHIP	100PF 5% 50V	C468	1-162-970-11	CERAMIC CHIP	0.01uF 10% 25V
C159	1-163-009-11	CERAMIC CHIP	0.001uF 10% 50V	C471	1-109-982-11	CERAMIC CHIP	1uF 10% 10V
C161	1-107-826-11	CERAMIC CHIP	0.1uF 10% 16V	C472	1-115-566-11	CERAMIC CHIP	4.7uF 10% 10V
C162	1-164-315-11	CERAMIC CHIP	470PF 5% 50V	C473	1-117-681-11	ELECT CHIP	100uF 20% 16V
C167	1-163-019-00	CERAMIC CHIP	0.0068uF 10% 50V	C474	1-164-346-11	CERAMIC CHIP	1uF 16V
C168	1-163-019-00	CERAMIC CHIP	0.0068uF 10% 50V	C475	1-126-395-11	ELECT	22uF 20% 16V
C169	1-164-344-11	CERAMIC CHIP	0.068uF 10% 25V	C477	1-115-469-31	ELECT	4700uF 99% 16V
C170	1-163-019-00	CERAMIC CHIP	0.0068uF 10% 50V	C479	1-115-339-11	CERAMIC CHIP	0.1uF 10% 50V
C171	1-163-009-11	CERAMIC CHIP	0.001uF 10% 50V	C481	1-164-005-11	CERAMIC CHIP	0.47uF 25V
C181	1-126-204-11	ELECT CHIP	47uF 20% 16V	C482	1-126-204-11	ELECT CHIP	47uF 20% 16V
C182	1-115-339-11	CERAMIC CHIP	0.1uF 10% 50V	C483	1-126-197-11	ELECT CHIP	10uF 20% 50V
C254	1-115-339-11	CERAMIC CHIP	0.1uF 10% 50V	C485	1-127-820-11	CERAMIC	4.7uF 16V
C271	1-115-339-11	CERAMIC CHIP	0.1uF 10% 50V	C486	1-127-820-11	CERAMIC	4.7uF 16V
C272	1-115-339-11	CERAMIC CHIP	0.1uF 10% 50V	C487	1-127-820-11	CERAMIC	4.7uF 16V
C291	1-162-927-11	CERAMIC CHIP	100PF 5% 50V	C488	1-127-820-11	CERAMIC	4.7uF 16V
C292	1-162-927-11	CERAMIC CHIP	100PF 5% 50V	C489	1-164-489-11	CERAMIC CHIP	0.22uF 10% 16V
C293	1-163-021-11	CERAMIC CHIP	0.01uF 10% 50V	C490	1-164-489-11	CERAMIC CHIP	0.22uF 10% 16V
C301	1-115-339-11	CERAMIC CHIP	0.1uF 10% 50V	C491	1-164-489-11	CERAMIC CHIP	0.22uF 10% 16V
C314	1-115-339-11	CERAMIC CHIP	0.1uF 10% 50V	C492	1-164-489-11	CERAMIC CHIP	0.22uF 10% 16V
C316	1-115-339-11	CERAMIC CHIP	0.1uF 10% 50V	C501	1-115-339-11	CERAMIC CHIP	0.1uF 10% 50V
C319	1-115-339-11	CERAMIC CHIP	0.1uF 10% 50V	C502	1-162-964-11	CERAMIC CHIP	0.001uF 10% 50V
C320	1-115-339-11	CERAMIC CHIP	0.1uF 10% 50V	C503	1-162-919-11	CERAMIC CHIP	22PF 5% 50V
C321	1-126-246-11	ELECT CHIP	220uF 20% 4V	C504	1-162-919-11	CERAMIC CHIP	22PF 5% 50V
C323	1-162-919-11	CERAMIC CHIP	22PF 5% 50V	C506	1-162-964-11	CERAMIC CHIP	0.001uF 10% 50V
C324	1-162-919-11	CERAMIC CHIP	22PF 5% 50V	C507	1-115-339-11	CERAMIC CHIP	0.1uF 10% 50V
C327	1-115-339-11	CERAMIC CHIP	0.1uF 10% 50V	C509	1-164-505-11	CERAMIC CHIP	2.2uF 16V
C328	1-115-339-11	CERAMIC CHIP	0.1uF 10% 50V	C510	1-115-339-11	CERAMIC CHIP	0.1uF 10% 50V
C329	1-115-339-11	CERAMIC CHIP	0.1uF 10% 50V	C511	1-125-565-11	DOUBLE LAYER	0.22F 5.5V
C333	1-163-009-11	CERAMIC CHIP	0.001uF 10% 50V	C512	1-125-565-11	DOUBLE LAYER	0.22F 5.5V
C334	1-115-339-11	CERAMIC CHIP	0.1uF 10% 50V	C513	1-162-964-11	CERAMIC CHIP	0.001uF 10% 50V
C335	1-115-339-11	CERAMIC CHIP	0.1uF 10% 50V	C514	1-163-017-00	CERAMIC CHIP	0.0047uF 5% 50V
C336	1-115-339-11	CERAMIC CHIP	0.1uF 10% 50V	C535	1-115-339-11	CERAMIC CHIP	0.1uF 10% 50V
C337	1-104-851-11	TANTALUM CHIP	10uF 20% 10V	C557	1-162-964-11	CERAMIC CHIP	0.001uF 10% 50V
C338	1-162-919-11	CERAMIC CHIP	22PF 5% 50V	C562	1-125-817-11	CERAMIC CHIP	10uF 10% 6.3V
C339	1-162-964-11	CERAMIC CHIP	0.001uF 10% 50V	C601	1-164-506-11	CERAMIC CHIP	4.7uF 16V
C341	1-115-339-11	CERAMIC CHIP	0.1uF 10% 50V	C602	1-164-506-11	CERAMIC CHIP	4.7uF 16V
C353	1-115-339-11	CERAMIC CHIP	0.1uF 10% 50V	C603	1-162-919-11	CERAMIC CHIP	22PF 5% 50V
C401	1-117-681-11	ELECT CHIP	100uF 20% 16V	C604	1-162-919-11	CERAMIC CHIP	22PF 5% 50V
C402	1-126-246-11	ELECT CHIP	220uF 20% 4V	C605	1-115-412-11	CERAMIC CHIP	680PF 5% 25V
C403	1-117-681-11	ELECT CHIP	100uF 20% 16V	C606	1-115-412-11	CERAMIC CHIP	680PF 5% 25V
C404	1-117-681-11	ELECT CHIP	100uF 20% 16V	C607	1-115-412-11	CERAMIC CHIP	680PF 5% 25V
C405	1-115-339-11	CERAMIC CHIP	0.1uF 10% 50V	C608	1-115-412-11	CERAMIC CHIP	680PF 5% 25V
C406	1-126-395-11	ELECT	22uF 20% 16V	C609	1-163-021-11	CERAMIC CHIP	0.01uF 10% 50V
C407	1-115-339-11	CERAMIC CHIP	0.1uF 10% 50V	C611	1-124-779-00	ELECT CHIP	10uF 20% 16V
C408	1-117-681-11	ELECT CHIP	100uF 20% 16V	C612	1-162-970-11	CERAMIC CHIP	0.01uF 10% 25V
C409	1-115-339-11	CERAMIC CHIP	0.1uF 10% 50V	C613	1-164-506-11	CERAMIC CHIP	4.7uF 16V
C410	1-124-779-00	ELECT CHIP	10uF 20% 16V	C615	1-126-204-11	ELECT CHIP	47uF 20% 16V
C422	1-163-021-11	CERAMIC CHIP	0.01uF 10% 50V				

Ref. No.	Part No.	Description	Remark	Ref. No.	Part No.	Description	Remark
C616	1-164-506-11	CERAMIC CHIP	4.7uF 16V	C705	1-163-009-11	CERAMIC CHIP 0.001uF 10%	50V
C617	1-162-919-11	CERAMIC CHIP	22PF 5% 50V	C706	1-163-235-11	CERAMIC CHIP 22PF 5%	50V
C618	1-117-681-11	ELECT CHIP	100uF 20% 16V	C707	1-163-235-11	CERAMIC CHIP 22PF 5%	50V
C619	1-117-681-11	ELECT CHIP	100uF 20% 16V	C751	1-164-505-11	CERAMIC CHIP 2.2uF	16V
C620	1-162-919-11	CERAMIC CHIP	22PF 5% 50V	C752	1-164-505-11	CERAMIC CHIP 2.2uF	16V
C621	1-124-779-00	ELECT CHIP	10uF 20% 16V	C753	1-164-700-11	CERAMIC CHIP 0.68uF	16V
C622	1-124-779-00	ELECT CHIP	10uF 20% 16V	C754	1-164-505-11	CERAMIC CHIP 2.2uF	16V
C623	1-162-964-11	CERAMIC CHIP	0.001uF 10% 50V	C755	1-163-037-11	CERAMIC CHIP 0.022uF 10%	25V
C624	1-162-964-11	CERAMIC CHIP	0.001uF 10% 50V	C757	1-115-185-11	CERAMIC CHIP 0.033uF 10%	50V
C626	1-115-339-11	CERAMIC CHIP	0.1uF 10% 50V	C771	1-164-506-11	CERAMIC CHIP 4.7uF	16V
C631	1-164-506-11	CERAMIC CHIP	4.7uF 16V	C772	1-164-505-11	CERAMIC CHIP 2.2uF	16V
C632	1-164-506-11	CERAMIC CHIP	4.7uF 16V	C773	1-164-505-11	CERAMIC CHIP 2.2uF	16V
C633	1-162-919-11	CERAMIC CHIP	22PF 5% 50V	C774	1-164-506-11	CERAMIC CHIP 4.7uF	16V
C634	1-162-919-11	CERAMIC CHIP	22PF 5% 50V	C782	1-104-913-11	TANTALUM CHIP 10uF 20%	16V
C635	1-115-412-11	CERAMIC CHIP	680PF 5% 25V	C784	1-119-751-11	TANTALUM CHIP 22uF 20%	16V
C636	1-115-412-11	CERAMIC CHIP	680PF 5% 25V	C785	1-115-339-11	CERAMIC CHIP 0.1uF 10%	50V
C637	1-115-412-11	CERAMIC CHIP	680PF 5% 25V	C786	1-164-506-11	CERAMIC CHIP 4.7uF	16V
C638	1-115-412-11	CERAMIC CHIP	680PF 5% 25V	C787	1-164-230-11	CERAMIC CHIP 220PF 5%	50V
C639	1-163-021-11	CERAMIC CHIP	0.01uF 10% 50V	C788	1-164-230-11	CERAMIC CHIP 220PF 5%	50V
C641	1-124-779-00	ELECT CHIP	10uF 20% 16V	C789	1-163-125-00	CERAMIC CHIP 220PF 5%	50V
C642	1-162-970-11	CERAMIC CHIP	0.01uF 10% 25V	C796	1-164-506-11	CERAMIC CHIP 4.7uF	16V
C643	1-164-506-11	CERAMIC CHIP	4.7uF 16V	C797	1-164-230-11	CERAMIC CHIP 220PF 5%	50V
C645	1-126-204-11	ELECT CHIP	47uF 20% 16V	C798	1-164-230-11	CERAMIC CHIP 220PF 5%	50V
C646	1-164-506-11	CERAMIC CHIP	4.7uF 16V	C799	1-163-125-00	CERAMIC CHIP 220PF 5%	50V
C647	1-162-919-11	CERAMIC CHIP	22PF 5% 50V	< CONNECTOR/JACK >			
C648	1-117-681-11	ELECT CHIP	100uF 20% 16V	* CN101	1-506-984-11	PIN, CONNECTOR (PC BOARD) 2P	
C649	1-117-681-11	ELECT CHIP	100uF 20% 16V	CN202	1-764-441-21	CONNECTOR, FPC 30P	
C650	1-162-919-11	CERAMIC CHIP	22PF 5% 50V	CN251	1-770-410-11	CONNECTOR, BOARD TO BOARD 18P	
C651	1-124-779-00	ELECT CHIP	10uF 20% 16V	CN271	1-580-907-31	PLUG, CONNECTOR (BUS CONTROL IN)	
C652	1-124-779-00	ELECT CHIP	10uF 20% 16V	* CN291	1-564-506-11	PLUG, CONNECTOR 3P	
C653	1-162-964-11	CERAMIC CHIP	0.001uF 10% 50V	CN401	1-779-823-21	CONNECTOR, BOARD TO BOARD 30P	
C654	1-162-964-11	CERAMIC CHIP	0.001uF 10% 50V	CNJ252	1-691-258-21	JACK (MIC)	
C656	1-115-339-11	CERAMIC CHIP	0.1uF 10% 50V	CNJ272	1-566-822-41	JACK (REMOTE IN)	
C657	1-163-243-11	CERAMIC CHIP	47PF 5% 50V	CNP401	1-774-701-11	PIN, CONNECTOR 16P (POWER)	
C658	1-163-243-11	CERAMIC CHIP	47PF 5% 50V	CNP601	1-774-700-21	JACK, PIN 6P (LINE OUT FRONT, LINE OUT REAR, BUS AUDIO IN)	
C659	1-163-243-11	CERAMIC CHIP	47PF 5% 50V	< COMPOSITION CIRCUIT BLOCK >			
C660	1-163-243-11	CERAMIC CHIP	47PF 5% 50V	CP101	1-803-335-21	ABSORBER, CHIP SURGE	
C661	1-164-506-11	CERAMIC CHIP	4.7uF 16V	< DIODE >			
C662	1-162-915-11	CERAMIC CHIP	10PF 0.5PF 50V	D181	8-719-047-98	DIODE HZU5.6B2TRF	
C664	1-162-915-11	CERAMIC CHIP	10PF 0.5PF 50V	D204	8-719-914-44	DIODE DAP202K-T-146	
C665	1-163-137-00	CERAMIC CHIP	680PF 5% 50V	D251	8-719-071-71	DIODE HZU8.2B2TRF	
C666	1-163-137-00	CERAMIC CHIP	680PF 5% 50V	D252	8-719-071-71	DIODE HZU8.2B2TRF	
C669	1-162-970-11	CERAMIC CHIP	0.01uF 10% 25V	D253	8-719-071-71	DIODE HZU8.2B2TRF	
C670	1-163-235-11	CERAMIC CHIP	22PF 5% 50V	D254	8-719-914-44	DIODE DAP202K-T-146	
C672	1-162-970-11	CERAMIC CHIP	0.01uF 10% 25V	D255	8-719-071-71	DIODE HZU8.2B2TRF	
C673	1-125-838-11	CERAMIC CHIP	2.2uF 10% 6.3V	D256	8-719-071-71	DIODE HZU8.2B2TRF	
C674	1-125-838-11	CERAMIC CHIP	2.2uF 10% 6.3V	D257	8-719-071-71	DIODE HZU8.2B2TRF	
C675	1-125-838-11	CERAMIC CHIP	2.2uF 10% 6.3V	D258	8-719-071-71	DIODE HZU8.2B2TRF	
C676	1-125-838-11	CERAMIC CHIP	2.2uF 10% 6.3V	D259	8-719-071-71	DIODE HZU8.2B2TRF	
C677	1-125-838-11	CERAMIC CHIP	2.2uF 10% 6.3V	D260	8-719-071-71	DIODE HZU8.2B2TRF	
C681	1-164-506-11	CERAMIC CHIP	4.7uF 16V	D261	8-719-071-71	DIODE HZU8.2B2TRF	
C682	1-164-506-11	CERAMIC CHIP	4.7uF 16V	D262	8-719-071-71	DIODE HZU8.2B2TRF	
C683	1-162-964-11	CERAMIC CHIP	0.001uF 10% 50V	D263	8-719-071-25	DIODE HZU18B2TRF	
C684	1-162-964-11	CERAMIC CHIP	0.001uF 10% 50V				
C685	1-162-970-11	CERAMIC CHIP	0.01uF 10% 25V				
C691	1-163-021-11	CERAMIC CHIP	0.01uF 10% 50V				
C696	1-124-779-00	ELECT CHIP	10uF 20% 16V				
C701	1-115-339-11	CERAMIC CHIP	0.1uF 10% 50V				

# MAIN

Ref. No.	Part No.	Description	Remark	Ref. No.	Part No.	Description	Remark
D264	8-719-071-25	DIODE HZU18B2TRF		FB204	1-500-240-22	FERRITE	OuH
D265	8-719-071-25	DIODE HZU18B2TRF		FB205	1-500-240-22	FERRITE	OuH
D271	8-719-938-75	DIODE SB05-05CP-TB					
D272	8-719-064-08	DIODE HZU6.8B2TRF		FB206	1-500-240-22	FERRITE	OuH
D273	8-719-071-25	DIODE HZU18B2TRF		FB301	1-500-240-22	FERRITE	OuH
				FB302	1-216-295-00	SHORT	0
D274	8-719-071-25	DIODE HZU18B2TRF		FB303	1-500-240-22	FERRITE	OuH
D275	8-719-064-03	DIODE HZU16B2TRF		FB305	1-500-240-22	FERRITE	OuH
D276	8-719-105-99	DIODE HZU6.2B2TRF					
D277	8-719-073-01	DIODE MA111-TX		FB401	1-216-295-00	SHORT	0
D278	8-719-073-01	DIODE MA111-TX		FB402	1-500-240-22	FERRITE	OuH
D279	8-719-071-71	DIODE HZU8.2B2TRF				< IC >	
D280	8-719-071-71	DIODE HZU8.2B2TRF		IC151	8-759-586-54	IC TDA7427ADTR	
D282	8-719-073-01	DIODE MA111-TX		IC271	8-759-593-98	IC BA8270FV-E2	
D283	8-719-073-01	DIODE MA111-TX		IC300	8-752-395-98	IC CXD2727Q	
D291	8-719-941-23	DIODE DA204UT106		IC351	8-759-524-05	IC TC74VHC126FT (EL)	
				IC401	8-759-710-88	IC NJM431U-TE2	
D403	8-719-914-43	DIODE DAN202K-T-146					
D421	8-719-977-03	DIODE MA8056-H-TX		IC402	8-759-643-48	IC BA00ASFP-E2	
D422	8-719-981-59	DIODE FC805-TL		IC403	8-759-476-23	IC BA08SFP-E2	
D423	8-719-938-75	DIODE SB05-05CP-TB		IC404	8-759-460-72	IC BA033FP-E2	
D424	8-719-981-59	DIODE FC805-TL		IC421	8-759-525-98	IC RN5VL45CA-TL	
				IC481	8-759-486-44	IC TDA7386	
D431	8-719-064-08	DIODE HZU6.8B2TRF					
D432	8-719-914-43	DIODE DAN202K-T-146		IC500	8-759-593-49	IC MB90574APMT-G-214-BND	
D441	8-719-914-43	DIODE DAN202K-T-146		IC506	8-759-571-49	IC XC61AN4102PR	
D442	8-719-064-08	DIODE HZU6.8B2TRF		IC507	8-759-495-76	IC RN5VD33AA-TL	
D461	8-719-420-51	DIODE MA729-TX		IC601	8-759-385-17	IC NJM4580E (TE2)	
				IC602	8-759-594-52	IC LM1973MX	
D462	8-719-071-25	DIODE HZU18B2TRF					
D463	8-719-071-25	DIODE HZU18B2TRF		IC603	8-759-394-84	IC NJM072BM-TE2	
D464	8-719-071-25	DIODE HZU18B2TRF		IC604	8-759-593-97	IC NJM2160AM-TE2	
D466	8-719-071-25	DIODE HZU18B2TRF		IC631	8-759-385-17	IC NJM4580E (TE2)	
D467	8-719-053-18	DIODE 1SR154-400TE-25		IC632	8-759-594-52	IC LM1973MX	
				IC633	8-759-394-84	IC NJM072BM-TE2	
D468	8-719-053-18	DIODE 1SR154-400TE-25					
D471	8-719-073-01	DIODE MA111-TX		IC634	8-759-593-97	IC NJM2160AM-TE2	
D472	8-719-073-01	DIODE MA111-TX		IC661	8-759-385-17	IC NJM4580E (TE2)	
D477	8-719-049-38	DIODE 1N5404TU		IC663	8-759-394-84	IC NJM072BM-TE2	
D481	8-719-076-95	DIODE PTZ-TE25-18B		IC691	8-759-488-29	IC TC7W66FU (TE12L)	
				IC701	8-759-648-83	IC HD6472355F20A08F	
D482	8-719-076-95	DIODE PTZ-TE25-18B					
D483	8-719-076-95	DIODE PTZ-TE25-18B		IC702	8-759-277-63	IC TC7W14FU (TE12R)	
D484	8-719-076-95	DIODE PTZ-TE25-18B		IC752	8-759-488-29	IC TC7W66FU (TE12L)	
D485	8-719-076-95	DIODE PTZ-TE25-18B		IC771	8-759-473-80	IC BA3131FS-E2	
D486	8-719-076-95	DIODE PTZ-TE25-18B					
						< SHORT >	
D487	8-719-076-95	DIODE PTZ-TE25-18B		JC100	1-216-295-00	SHORT	0
D488	8-719-076-95	DIODE PTZ-TE25-18B		JC101	1-216-295-00	SHORT	0
D489	8-719-064-03	DIODE HZU16B2TRF		JC201	1-216-295-00	SHORT	0
D491	8-719-062-37	DIODE HZU3.9B1TRF		JC207	1-216-295-00	SHORT	0
D527	8-719-073-01	DIODE MA111-TX		JC251	1-216-295-00	SHORT	0
D546	8-719-071-71	DIODE HZU8.2B2TRF		JC300	1-216-295-00	SHORT	0
D555	8-719-976-99	DIODE HZU5.1B2TRF		JC351	1-216-295-00	SHORT	0
D601	8-719-941-23	DIODE DA204UT106		JC401	1-216-295-00	SHORT	0
D631	8-719-941-23	DIODE DA204UT106					
D661	8-719-941-23	DIODE DA204UT106				< COIL >	
				L181	1-412-060-11	INDUCTOR CHIP	22uH
D701	8-719-073-01	DIODE MA111-TX		L401	1-412-058-11	INDUCTOR CHIP	10uH
D702	8-719-073-01	DIODE MA111-TX		L402	1-412-054-21	INDUCTOR CHIP	2.2uH
D751	8-719-062-37	DIODE HZU3.9B1TRF		L403	1-412-054-21	INDUCTOR CHIP	2.2uH
				L404	1-412-058-11	INDUCTOR CHIP	10uH
		< FERRITE BEAD/SHORT >					
FB201	1-216-295-00	SHORT	0	L506	1-412-060-11	INDUCTOR CHIP	22uH
FB202	1-216-295-00	SHORT	0				
FB203	1-216-295-00	SHORT	0				

Ref. No.	Part No.	Description	Remark	Ref. No.	Part No.	Description	Remark
L701	1-412-060-11	INDUCTOR CHIP 22uH		R111	1-216-296-00	SHORT 0	
		< TRANSISTOR >		R113	1-216-295-00	SHORT 0	
Q131	8-729-029-14	TRANSISTOR DTC144EUA-T106		R114	1-216-864-11	METAL CHIP 0 5%	1/16W
Q132	8-729-921-25	TRANSISTOR FMC2-T148		R124	1-216-037-00	METAL CHIP 330 5%	1/10W
Q133	8-729-905-35	TRANSISTOR 2SC4081T106R		R133	1-216-821-11	METAL CHIP 1K 5%	1/16W
Q180	8-729-904-63	TRANSISTOR DTB123YK-T-146		R134	1-216-841-11	METAL CHIP 47K 5%	1/16W
Q181	8-729-029-14	TRANSISTOR DTC144EUA-T106		R135	1-216-833-11	RES, CHIP 10K 5%	1/16W
				R151	1-216-017-00	RES, CHIP 47 5%	1/10W
Q182	8-729-904-63	TRANSISTOR DTB123YK-T-146		R153	1-216-001-00	METAL CHIP 10 5%	1/10W
Q183	8-729-029-14	TRANSISTOR DTC144EUA-T106		R154	1-216-813-11	METAL CHIP 220 5%	1/16W
Q185	8-729-920-85	TRANSISTOR 2SD1664-T101-QR		R155	1-216-813-11	METAL CHIP 220 5%	1/16W
Q251	8-729-025-48	TRANSISTOR XN4381-TX		R157	1-216-295-00	SHORT 0	
Q253	1-801-806-11	TRANSISTOR DTC144EK-T146		R158	1-216-073-00	METAL CHIP 10K 5%	1/10W
				R159	1-216-073-00	METAL CHIP 10K 5%	1/10W
Q254	8-729-026-53	TRANSISTOR 2SA1576A-T106-QR		R160	1-216-097-00	RES, CHIP 100K 5%	1/10W
Q255	8-729-905-35	TRANSISTOR 2SC4081T106R		R161	1-216-077-00	RES, CHIP 15K 5%	1/10W
Q256	8-729-106-60	TRANSISTOR 2SB1132-T101-QR		R162	1-216-083-00	METAL CHIP 27K 5%	1/10W
Q271	1-801-806-11	TRANSISTOR DTC144EK-T146		R181	1-216-057-00	METAL CHIP 2.2K 5%	1/10W
Q272	8-729-028-91	TRANSISTOR DTA144EUA-T106		R182	1-216-065-00	RES, CHIP 4.7K 5%	1/10W
				R202	1-216-295-00	SHORT 0	
Q273	8-729-120-28	TRANSISTOR 2SC2412K-T-146-QR		R251	1-218-710-11	METAL CHIP 5.6K 0.5%	1/16W
Q274	8-729-120-28	TRANSISTOR 2SC2412K-T-146-QR		R252	1-218-704-11	METAL CHIP 3.3K 0.5%	1/16W
Q275	8-729-028-91	TRANSISTOR DTA144EUA-T106		R253	1-216-845-11	METAL CHIP 100K 5%	1/16W
Q401	8-729-920-85	TRANSISTOR 2SD1664-T101-QR		R254	1-216-049-11	RES, CHIP 1K 5%	1/10W
Q402	8-729-106-60	TRANSISTOR 2SB1132-T101-QR		R255	1-216-025-00	RES, CHIP 100 5%	1/10W
				R256	1-216-025-00	RES, CHIP 100 5%	1/10W
Q403	1-801-806-11	TRANSISTOR DTC144EK-T146		R257	1-216-833-11	RES, CHIP 10K 5%	1/16W
Q421	8-729-822-84	TRANSISTOR 2SB1202FAT-TL		R258	1-216-833-11	RES, CHIP 10K 5%	1/16W
Q422	8-729-230-49	TRANSISTOR 2SC2712-YG-TE85L		R259	1-208-462-41	RES, CHIP 10K 2%	1/10W
Q423	1-801-806-11	TRANSISTOR DTC144EK-T146		R260	1-208-462-41	RES, CHIP 10K 2%	1/10W
Q424	1-801-806-11	TRANSISTOR DTC144EK-T146		R262	1-216-049-11	RES, CHIP 1K 5%	1/10W
				R263	1-216-049-11	RES, CHIP 1K 5%	1/10W
Q431	8-729-120-28	TRANSISTOR 2SC2412K-T-146-QR		R264	1-216-829-11	METAL CHIP 4.7K 5%	1/16W
Q441	8-729-905-35	TRANSISTOR 2SC4081T106R		R265	1-216-041-00	METAL CHIP 470 5%	1/10W
Q451	8-729-905-35	TRANSISTOR 2SC4081T106R		R271	1-216-001-00	METAL CHIP 10 5%	1/10W
Q461	8-729-049-13	FET UPA1853GR-9JG-E1		R272	1-216-073-00	METAL CHIP 10K 5%	1/10W
Q462	8-729-429-92	TRANSISTOR XN1211-TX		R273	1-216-025-00	RES, CHIP 100 5%	1/10W
				R274	1-216-025-00	RES, CHIP 100 5%	1/10W
Q471	1-801-806-11	TRANSISTOR DTC144EK-T146		R275	1-216-841-11	METAL CHIP 47K 5%	1/16W
Q472	8-729-026-53	TRANSISTOR 2SA1576A-T106-QR		R276	1-216-841-11	METAL CHIP 47K 5%	1/16W
Q473	8-729-921-25	TRANSISTOR FMC2-T148		R277	1-216-845-11	METAL CHIP 100K 5%	1/16W
Q474	8-729-921-25	TRANSISTOR FMC2-T148		R278	1-216-845-11	METAL CHIP 100K 5%	1/16W
Q501	8-729-028-91	TRANSISTOR DTA144EUA-T106		R279	1-216-025-00	RES, CHIP 100 5%	1/10W
				R280	1-216-025-00	RES, CHIP 100 5%	1/10W
Q504	1-801-806-11	TRANSISTOR DTC144EK-T146		R281	1-208-462-41	RES, CHIP 10K 2%	1/10W
Q523	8-729-024-31	TRANSISTOR XN1111-TX		R282	1-208-462-41	RES, CHIP 10K 2%	1/10W
Q601	8-729-400-56	TRANSISTOR 2SD1328-T-TX		R283	1-216-057-00	METAL CHIP 2.2K 5%	1/10W
Q602	8-729-400-56	TRANSISTOR 2SD1328-T-TX		R285	1-216-841-11	METAL CHIP 47K 5%	1/16W
Q631	8-729-400-56	TRANSISTOR 2SD1328-T-TX		R291	1-218-732-11	METAL CHIP 47K 0.5%	1/16W
				R292	1-218-732-11	METAL CHIP 47K 0.5%	1/16W
Q632	8-729-400-56	TRANSISTOR 2SD1328-T-TX		R293	1-216-627-11	METAL CHIP 100 0.5%	1/10W
Q661	8-729-400-56	TRANSISTOR 2SD1328-T-TX		R294	1-216-627-11	METAL CHIP 100 0.5%	1/10W
Q662	8-729-400-56	TRANSISTOR 2SD1328-T-TX		R331	1-216-825-11	METAL CHIP 2.2K 5%	1/16W
Q691	8-729-029-14	TRANSISTOR DTC144EUA-T106		R333	1-216-129-00	METAL CHIP 2.2M 5%	1/10W
Q751	8-729-921-25	TRANSISTOR FMC2-T148		R334	1-216-821-11	METAL CHIP 1K 5%	1/16W
				R335	1-216-821-11	METAL CHIP 1K 5%	1/16W
Q752	8-729-047-71	TRANSISTOR FMG12-T-148		R337	1-216-821-11	METAL CHIP 1K 5%	1/16W
Q753	8-729-920-21	TRANSISTOR DTC314TK-T-146		R341	1-216-825-11	METAL CHIP 2.2K 5%	1/16W
		< RESISTOR >					
R101	1-216-025-00	RES, CHIP 100 5%	1/10W				
R102	1-216-037-00	METAL CHIP 330 5%	1/10W				
R104	1-216-073-00	METAL CHIP 10K 5%	1/10W				
R105	1-216-081-00	METAL CHIP 22K 5%	1/10W				
R106	1-216-057-00	METAL CHIP 2.2K 5%	1/10W				

**MAIN**

Ref. No.	Part No.	Description		Remark	Ref. No.	Part No.	Description		Remark	
R342	1-216-089-00	RES, CHIP	47K	5%	1/10W	R513	1-216-295-00	SHORT	0	
R352	1-216-295-00	SHORT	0		R514	1-216-033-00	METAL CHIP	220	5% 1/10W	
R353	1-216-295-00	SHORT	0		R515	1-216-033-00	METAL CHIP	220	5% 1/10W	
R354	1-216-295-00	SHORT	0		R516	1-216-813-11	METAL CHIP	220	5% 1/16W	
R401	1-216-033-00	METAL CHIP	220	5%	1/10W	R517	1-216-813-11	METAL CHIP	220	5% 1/16W
R402	1-216-045-00	METAL CHIP	680	5%	1/10W	R519	1-216-057-00	METAL CHIP	2.2K	5% 1/10W
R403	1-216-033-00	METAL CHIP	220	5%	1/10W	R520	1-216-097-00	RES, CHIP	100K	5% 1/10W
R404	1-216-041-00	METAL CHIP	470	5%	1/10W	R521	1-216-845-11	METAL CHIP	100K	5% 1/16W
R405	1-216-045-00	METAL CHIP	680	5%	1/10W	R522	1-216-097-00	RES, CHIP	100K	5% 1/10W
R406	1-216-065-00	RES, CHIP	4.7K	5%	1/10W	R523	1-216-853-11	METAL CHIP	470K	5% 1/16W
R408	1-216-295-00	SHORT	0		R524	1-216-295-00	SHORT	0		
R412	1-216-295-00	SHORT	0		R525	1-216-057-00	METAL CHIP	2.2K	5% 1/10W	
R421	1-216-089-00	RES, CHIP	47K	5%	1/10W	R526	1-216-097-00	RES, CHIP	100K	5% 1/10W
R422	1-216-680-11	METAL CHIP	16K	0.5%	1/10W	R528	1-216-295-00	SHORT	0	
R423	1-216-661-11	METAL CHIP	2.7K	0.5%	1/10W	R551	1-216-841-11	METAL CHIP	47K	5% 1/16W
R430	1-216-821-11	METAL CHIP	1K	5%	1/16W	R585	1-216-845-11	METAL CHIP	100K	5% 1/16W
R431	1-216-081-00	METAL CHIP	22K	5%	1/10W	R587	1-216-097-00	RES, CHIP	100K	5% 1/10W
R432	1-216-081-00	METAL CHIP	22K	5%	1/10W	R591	1-216-839-11	METAL CHIP	33K	5% 1/16W
R434	1-216-057-00	METAL CHIP	2.2K	5%	1/10W	R595	1-216-049-11	RES, CHIP	1K	5% 1/10W
R441	1-216-839-11	METAL CHIP	33K	5%	1/16W	R601	1-218-711-11	METAL CHIP	6.2K	0.5% 1/16W
R442	1-216-841-11	METAL CHIP	47K	5%	1/16W	R602	1-216-833-11	RES, CHIP	10K	5% 1/16W
R443	1-216-825-11	METAL CHIP	2.2K	5%	1/16W	R603	1-216-841-11	METAL CHIP	47K	5% 1/16W
R444	1-216-841-11	METAL CHIP	47K	5%	1/16W	R604	1-218-711-11	METAL CHIP	6.2K	0.5% 1/16W
R451	1-216-833-11	RES, CHIP	10K	5%	1/16W	R605	1-216-833-11	RES, CHIP	10K	5% 1/16W
R452	1-216-833-11	RES, CHIP	10K	5%	1/16W	R606	1-216-841-11	METAL CHIP	47K	5% 1/16W
R453	1-216-845-11	METAL CHIP	100K	5%	1/16W	R607	1-216-675-11	METAL CHIP	10K	0.5% 1/10W
R454	1-216-839-11	METAL CHIP	33K	5%	1/16W	R608	1-216-667-11	METAL CHIP	4.7K	0.5% 1/10W
R461	1-216-073-00	METAL CHIP	10K	5%	1/10W	R609	1-216-675-11	METAL CHIP	10K	0.5% 1/10W
R462	1-216-073-00	METAL CHIP	10K	5%	1/10W	R610	1-216-667-11	METAL CHIP	4.7K	0.5% 1/10W
R463	1-216-073-00	METAL CHIP	10K	5%	1/10W	R612	1-202-926-11	RES, CHIP	36K	5% 1/16W
R464	1-216-073-00	METAL CHIP	10K	5%	1/10W	R613	1-218-293-11	RES, CHIP	24K	5% 1/16W
R466	1-216-833-11	RES, CHIP	10K	5%	1/16W	R614	1-218-293-11	RES, CHIP	24K	5% 1/16W
R471	1-216-073-00	METAL CHIP	10K	5%	1/10W	R615	1-202-926-11	RES, CHIP	36K	5% 1/16W
R472	1-216-833-11	RES, CHIP	10K	5%	1/16W	R616	1-216-833-11	RES, CHIP	10K	5% 1/16W
R473	1-216-809-11	METAL CHIP	100	5%	1/16W	R617	1-216-833-11	RES, CHIP	10K	5% 1/16W
R474	1-216-821-11	METAL CHIP	1K	5%	1/16W	R618	1-216-033-00	METAL CHIP	220	5% 1/10W
R475	1-216-837-11	METAL CHIP	22K	5%	1/16W	R619	1-216-049-11	RES, CHIP	1K	5% 1/10W
R476	1-216-821-11	METAL CHIP	1K	5%	1/16W	R620	1-216-049-11	RES, CHIP	1K	5% 1/10W
R477	1-216-049-11	RES, CHIP	1K	5%	1/10W	R621	1-216-033-00	METAL CHIP	220	5% 1/10W
R478	1-216-845-11	METAL CHIP	100K	5%	1/16W	R622	1-216-081-00	METAL CHIP	22K	5% 1/10W
R479	1-216-833-11	RES, CHIP	10K	5%	1/16W	R623	1-216-081-00	METAL CHIP	22K	5% 1/10W
R481	1-216-057-00	METAL CHIP	2.2K	5%	1/10W	R627	1-216-833-11	RES, CHIP	10K	5% 1/16W
R482	1-216-057-00	METAL CHIP	2.2K	5%	1/10W	R628	1-216-833-11	RES, CHIP	10K	5% 1/16W
R483	1-216-057-00	METAL CHIP	2.2K	5%	1/10W	R629	1-216-833-11	RES, CHIP	10K	5% 1/16W
R484	1-216-057-00	METAL CHIP	2.2K	5%	1/10W	R630	1-216-833-11	RES, CHIP	10K	5% 1/16W
R485	1-216-837-11	METAL CHIP	22K	5%	1/16W	R631	1-218-711-11	METAL CHIP	6.2K	0.5% 1/16W
R486	1-216-837-11	METAL CHIP	22K	5%	1/16W	R632	1-216-833-11	RES, CHIP	10K	5% 1/16W
R487	1-216-837-11	METAL CHIP	22K	5%	1/16W	R633	1-216-841-11	METAL CHIP	47K	5% 1/16W
R488	1-216-837-11	METAL CHIP	22K	5%	1/16W	R634	1-218-711-11	METAL CHIP	6.2K	0.5% 1/16W
R501	1-216-097-00	RES, CHIP	100K	5%	1/10W	R635	1-216-833-11	RES, CHIP	10K	5% 1/16W
R502	1-216-821-11	METAL CHIP	1K	5%	1/16W	R636	1-216-841-11	METAL CHIP	47K	5% 1/16W
R503	1-216-864-11	METAL CHIP	0	5%	1/16W	R637	1-216-675-11	METAL CHIP	10K	0.5% 1/10W
R505	1-216-097-00	RES, CHIP	100K	5%	1/10W	R638	1-216-667-11	METAL CHIP	4.7K	0.5% 1/10W
R506	1-216-813-11	METAL CHIP	220	5%	1/16W	R639	1-216-675-11	METAL CHIP	10K	0.5% 1/10W
R509	1-216-033-00	METAL CHIP	220	5%	1/10W	R640	1-216-667-11	METAL CHIP	4.7K	0.5% 1/10W
R510	1-216-097-00	RES, CHIP	100K	5%	1/10W	R642	1-202-926-11	RES, CHIP	36K	5% 1/16W
R512	1-216-845-11	METAL CHIP	100K	5%	1/16W	R643	1-218-293-11	RES, CHIP	24K	5% 1/16W
					R644	1-218-293-11	RES, CHIP	24K	5% 1/16W	

Ref. No.	Part No.	Description	Remark	Ref. No.	Part No.	Description	Remark
R645	1-202-926-11	RES, CHIP	36K 5% 1/16W	R773	1-218-714-11	METAL CHIP 8.2K 0.5% 1/16W	
R646	1-216-833-11	RES, CHIP	10K 5% 1/16W	R774	1-218-720-11	METAL CHIP 15K 0.5% 1/16W	
R647	1-216-833-11	RES, CHIP	10K 5% 1/16W	R775	1-218-704-11	METAL CHIP 3.3K 0.5% 1/16W	
R648	1-216-033-00	METAL CHIP	220 5% 1/10W	R776	1-218-702-11	METAL CHIP 2.7K 0.5% 1/16W	
R649	1-216-049-11	RES, CHIP	1K 5% 1/10W	R777	1-218-724-11	METAL CHIP 22K 0.5% 1/16W	
R650	1-216-049-11	RES, CHIP	1K 5% 1/10W	R778	1-218-712-11	METAL CHIP 6.8K 0.5% 1/16W	
R651	1-216-033-00	METAL CHIP	220 5% 1/10W	R779	1-218-714-11	METAL CHIP 8.2K 0.5% 1/16W	
R652	1-216-081-00	METAL CHIP	22K 5% 1/10W	R780	1-218-720-11	METAL CHIP 15K 0.5% 1/16W	
R653	1-216-081-00	METAL CHIP	22K 5% 1/10W	R781	1-218-732-11	METAL CHIP 47K 0.5% 1/16W	
R657	1-216-073-00	METAL CHIP	10K 5% 1/10W	R782	1-218-704-11	METAL CHIP 3.3K 0.5% 1/16W	
R658	1-216-073-00	METAL CHIP	10K 5% 1/10W	R783	1-218-702-11	METAL CHIP 2.7K 0.5% 1/16W	
R661	1-216-073-00	METAL CHIP	10K 5% 1/10W	R784	1-218-724-11	METAL CHIP 22K 0.5% 1/16W	
R662	1-216-073-00	METAL CHIP	10K 5% 1/10W	R785	1-218-712-11	METAL CHIP 6.8K 0.5% 1/16W	
R663	1-216-089-00	RES, CHIP	47K 5% 1/10W	R786	1-218-732-11	METAL CHIP 47K 0.5% 1/16W	
R667	1-218-720-11	METAL CHIP	15K 0.5% 1/16W	R787	1-216-665-11	METAL CHIP 3.9K 0.5% 1/10W	
R668	1-218-730-11	METAL CHIP	39K 0.5% 1/16W	R788	1-216-665-11	METAL CHIP 3.9K 0.5% 1/10W	
R669	1-218-720-11	METAL CHIP	15K 0.5% 1/16W	R789	1-216-665-11	METAL CHIP 3.9K 0.5% 1/10W	
R670	1-218-730-11	METAL CHIP	39K 0.5% 1/16W	R791	1-208-795-11	RES, CHIP 3.6K 2% 1/10W	
R678	1-216-033-00	METAL CHIP	220 5% 1/10W	R792	1-208-795-11	RES, CHIP 3.6K 2% 1/10W	
R679	1-216-049-11	RES, CHIP	1K 5% 1/10W	R797	1-216-665-11	METAL CHIP 3.9K 0.5% 1/10W	
R680	1-216-049-11	RES, CHIP	1K 5% 1/10W	R798	1-216-665-11	METAL CHIP 3.9K 0.5% 1/10W	
R681	1-216-033-00	METAL CHIP	220 5% 1/10W	R799	1-216-665-11	METAL CHIP 3.9K 0.5% 1/10W	
R682	1-216-081-00	METAL CHIP	22K 5% 1/10W	< COMPOSITION CIRCUIT BLOCK >			
R683	1-216-081-00	METAL CHIP	22K 5% 1/10W	RB251	1-233-412-11	RES, CHIP NETWORK 1K (3216)	
R691	1-216-833-11	RES, CHIP	10K 5% 1/16W	RB252	1-233-412-11	RES, CHIP NETWORK 1K (3216)	
R692	1-216-833-11	RES, CHIP	10K 5% 1/16W	RB301	1-233-578-11	RES, CHIP NETWORK 47K	
R693	1-216-841-11	METAL CHIP	47K 5% 1/16W	RB502	1-233-412-11	RES, CHIP NETWORK 1K (3216)	
R695	1-216-845-11	METAL CHIP	100K 5% 1/16W	RB504	1-216-182-00	RES, CHIP NETWORK 220 (3216)	
R696	1-216-097-00	RES, CHIP	100K 5% 1/10W	RB505	1-233-412-11	RES, CHIP NETWORK 1K (3216)	
R701	1-216-845-11	METAL CHIP	100K 5% 1/16W	RB507	1-216-182-00	RES, CHIP NETWORK 220 (3216)	
R702	1-216-845-11	METAL CHIP	100K 5% 1/16W	< SWITCH >			
R703	1-216-845-11	METAL CHIP	100K 5% 1/16W	S500	1-762-108-31	SWITCH, PUSH (1 KEY) (NOSE DETECT)	
R704	1-216-033-00	METAL CHIP	220 5% 1/10W	< THERMISTOR >			
R705	1-216-033-00	METAL CHIP	220 5% 1/10W	TH271	1-801-792-21	THERMISTOR, POSITIVE	
R706	1-216-033-00	METAL CHIP	220 5% 1/10W	TH461	1-803-615-21	THERMISTOR, POSITIVE	
R707	1-216-025-00	RES, CHIP	100 5% 1/10W	TH462	1-803-615-21	THERMISTOR, POSITIVE	
R709	1-216-041-00	METAL CHIP	470 5% 1/10W	< TUNER >			
R710	1-216-033-00	METAL CHIP	220 5% 1/10W	TU101	A-3282-045-A	TUNER UNIT (TUX-012 (E))	
R711	1-216-097-00	RES, CHIP	100K 5% 1/10W	< VIBRATOR >			
R714	1-216-864-11	METAL CHIP	0 5% 1/16W	X151	1-781-361-21	VIBRATOR, CRYSTAL (10.25MHz)	
R715	1-216-845-11	METAL CHIP	100K 5% 1/16W	X300	1-767-408-21	VIBRATOR, CRYSTAL (16.9344MHz)	
R717	1-216-845-11	METAL CHIP	100K 5% 1/16W	X500	1-781-660-11	VIBRATOR, CERAMIC (3.58MHz)	
R718	1-216-845-11	METAL CHIP	100K 5% 1/16W	X501	1-760-928-21	VIBRATOR, CRYSTAL (32.768kHz)	
R720	1-216-097-00	RES, CHIP	100K 5% 1/10W	X701	1-781-030-21	VIBRATOR, CRYSTAL (18.432MHz)	
R721	1-216-057-00	METAL CHIP	2.2K 5% 1/10W	*****			
R751	1-216-813-11	METAL CHIP	220 5% 1/16W	* A-3294-730-A RELAY BOARD, COMPLETE			
R752	1-216-813-11	METAL CHIP	220 5% 1/16W	*****			
R753	1-216-081-00	METAL CHIP	22K 5% 1/10W	3-040-760-01	SHEET (CONNECTOR)		
R754	1-216-081-00	METAL CHIP	22K 5% 1/10W	< CAPACITOR >			
R756	1-216-071-00	METAL CHIP	8.2K 5% 1/10W	C701	1-164-004-11	CERAMIC CHIP 0.1uF 10% 25V	
R757	1-216-081-00	METAL CHIP	22K 5% 1/10W				
R761	1-216-841-11	METAL CHIP	47K 5% 1/16W				
R762	1-216-841-11	METAL CHIP	47K 5% 1/16W				
R763	1-216-829-11	METAL CHIP	4.7K 5% 1/16W				
R765	1-216-097-00	RES, CHIP	100K 5% 1/10W				
R771	1-218-732-11	METAL CHIP	47K 0.5% 1/16W				
R772	1-218-732-11	METAL CHIP	47K 0.5% 1/16W				

# MDX-C8970

## RELAY

Ref. No.	Part No.	Description			Remark
C702	1-164-004-11	CERAMIC CHIP	0.1uF	10%	25V
C705	1-163-009-11	CERAMIC CHIP	0.001uF	10%	50V
C706	1-163-009-11	CERAMIC CHIP	0.001uF	10%	50V

< CONNECTOR >

CN701	1-793-290-11	SOCKET, CONNECTOR 18P
CN702	1-779-169-11	SOCKET, CONNECTOR 18P

< DIODE >

D701	8-719-056-84	DIODE	HZU7.5B2TRF
D702	8-719-056-84	DIODE	HZU7.5B2TRF
D703	8-719-056-84	DIODE	HZU7.5B2TRF
D704	8-719-056-84	DIODE	HZU7.5B2TRF
D705	8-719-056-84	DIODE	HZU7.5B2TRF

D706	8-719-056-84	DIODE	HZU7.5B2TRF
D707	8-719-071-25	DIODE	HZU18B2TRF

< LED >

LED706	8-719-064-72	LED	BG1101F-10-TR (MD DISC SLOT)
--------	--------------	-----	------------------------------

< SWITCH >

LSW702	1-771-703-11	SWITCH, KEYBOARD (WITH LED) (▲)
--------	--------------	---------------------------------

< RESISTOR >

R701	1-216-033-00	METAL CHIP	220	5%	1/10W
R709	1-216-295-00	SHORT	0		

< SWITCH >

S703	1-572-921-11	SWITCH, KEY BOARD (RESET)
------	--------------	---------------------------

\*\*\*\*\*